

# LAN-100 Beta Firmware

The current revision of the LAN-100 firmware is version 3.6/3. This version of LAN-100 firmware does not support PXL-250 controller initiated connections (controller dialup when the controller's buffer is full).

Lantronix has a beta version of LAN-100 firmware that does support PXL-250 controller initiated dialup connections. The current revision of the beta version is 3.6.509, however the revision is subject to change. The targeted formal release date of this firmware is Winter 2000, however the beta version is now available for use. If your application requires PXL-250 controller initiated connections you may download and install the beta firmware.

*NOTE: To set up the LAN-100 you must have a technical knowledge of networks and networking in a PC environment. Please consult your system or network administrator to resolve any networking issues that might occur.*

## 1.0 Downloading Beta Firmware

The beta firmware is available from Lantronix. Because the firmware includes data encryption (as defined by the United States Government), you must contact Lantronix directly and request a copy.

Lantronix Tech Support via the Web – <http://www.lantronix.com/support/>  
Lantronix Tech Support via Telephone – 800-422-7044 (U.S. & Canada)  
or at 949-453-3990 (worldwide)

Refer to the firmware documentation for instructions on how to upgrade the LAN-100 firmware.

## 2.0 Configuring the LAN-100

There are known configuration issues between the beta firmware and the EZWebCon configuration software. This means that the only reliable method for configuring the LAN-100 is to use Telnet to enter commands directly to the unit. For detailed information on the LAN-100 command set, please refer to the MSS-100 User Manual found on the Lantronix CD-ROM or available from the Lantronix web site ([www.lantronix.com](http://www.lantronix.com)).

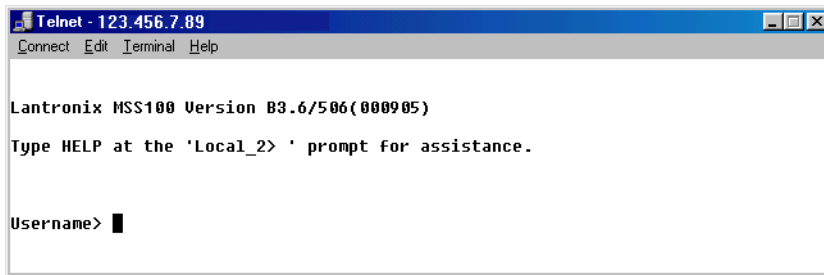
Perform the following steps to configure a LAN-100 module via Telnet.

1. Open the Telnet client from a DOS-box command prompt.

```
c:/> Telnet IP_Address (enter the IP Address of the LAN-100 unit – e.g. 123.456.7.89)
```

2. The Telnet session window appears (see Figure 1 on page 2).

# LAN-100 Beta Firmware



**Figure 1: Begin the Telnet Session**

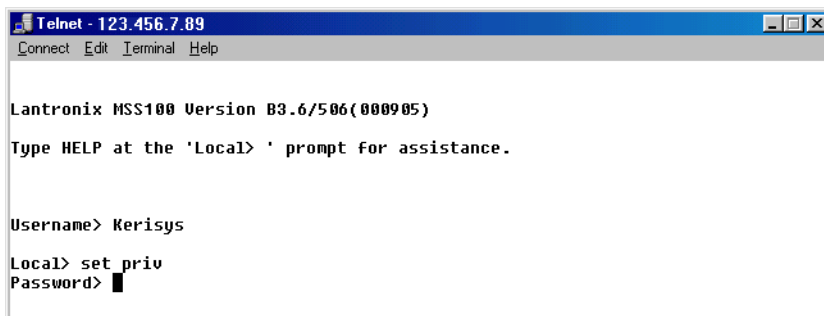
3. Login to the LAN-100 by entering the following Username.

Username> Kerisys

4. The Local prompt appears (see Figure 2). At the prompt, type the following command.

Local> set priv

5. The Password prompt appears.



**Figure 2: Enter the Password**

6. Enter the following password.

Password> system

*NOTE: "system" is the default password. If you have changed the password, please enter the new password instead.*

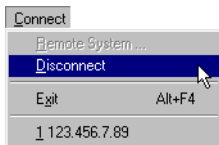
7. Please enter the characters carefully. Once the password is entered, the Telnet session is able to communicate with the LAN-100 unit.

# LAN-100 Beta Firmware

8. Enter the following commands.

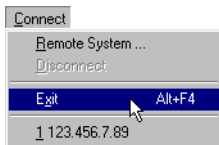
- Local>> change autostart disabled
- Local>> change autostart character \A1
- Local>> change autostart save 1
- Local>> change access dynamic
- Local>> change inactive timer 60s
- Local>> change dsrlogout enable
- Local>> change dedicated TCP <IP Address>:10021T

9. Use the File pull-down menu to disconnect from the Telnet session.



**Figure 3: Disconnecting the Telnet Session**

10. Use the File pull-down menu to exit the Telnet program.



**Figure 4: Exit the Telnet Program**

11. Cycle power on the LAN-100. The new configuration parameters will then take affect and the unit is ready for the access control network, including support for PXL-250 controller initiated dialup connections.

# LAN-100 Beta Firmware

---

**Application Notes**

**LAN-100**

This page is intentionally left blank.