

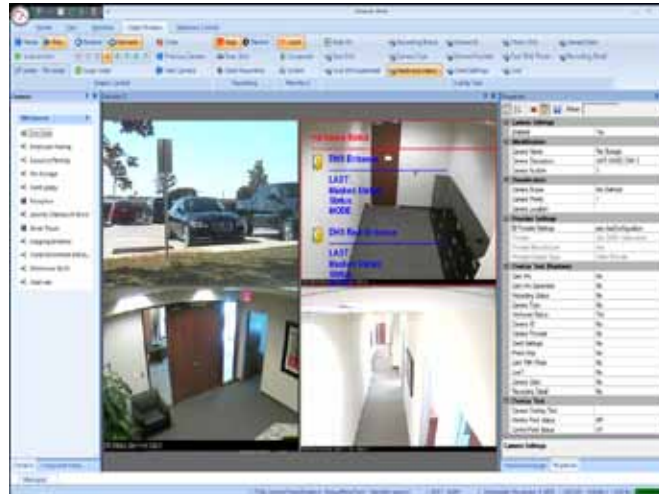
Reflections™ Event Video Recorder

Revolutionary Integration of Video and Access Control

- Enhances capabilities of existing video solutions
- Provides event-based video clips from within Doors.NET application
- Eliminates issues associated with time stamps and drift between access and video servers
- Direct connection support for many popular IP cameras
- Right-Click Control of doors or outputs directly from video screen
- Common user interface across multiple video platforms for viewing and command/control from within Doors.NET software
- Powerful Observation Video feature for operator-initiated recording



Reflections™ EVR is an advanced video solution for Keri's Doors.NET access control software that provides customers with a number of advantages over traditional DVR/NVR video products by enhancing the functionality of those systems. It is a separate Video Client that gathers pre-defined video events from a source (DVR, NVR, or IP camera) and associates them with their corresponding events within the Doors.NET access control application for later recall directly from the Doors.NET Client. And it can provide video command and control functions from within the Reflections Client.



By using the Reflections Client, customers are benefited by a common video user interface across multiple manufacturer platforms via a growing list of "plug-ins," and have available some powerful operator-initiated actions. A key Reflections feature is how access events and video events are associated, which is done at the time of occurrence via a unique identification key such that inaccurate time stamps caused by clock drifts are not a factor for subsequent event review or presentation of evidence.



2305 Bering Drive • San Jose, California • 95131
408-435-8400 • Toll Free: 800-260-5265 • Fax: 408-577-1792

e-mail: sales@kerisys.com • web: www.kerisys.com

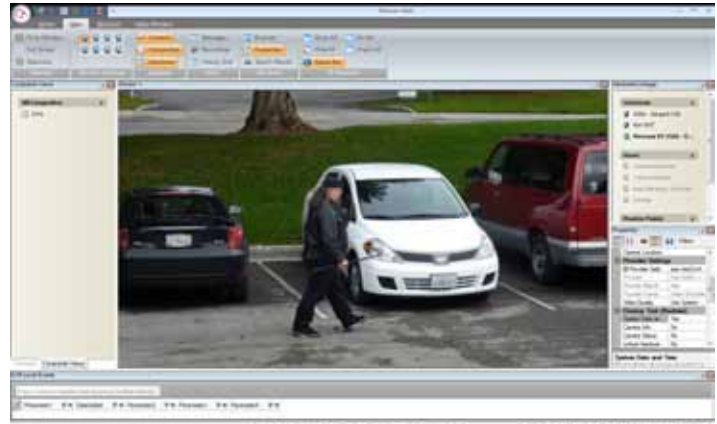
Reflections™ Event Video Recorder

Revolutionary Integration of Video and Access Control



Key Features:

- **Record on Event** - Define what is to be recorded and when, whether triggered by access hardware or camera inputs.
- **Local Playback** - Associated video clips can be played from access control event history.
- **Home DVR** - Pause, Fast Forward, and Rewind live video, just like with your home DVR.
- **E-mail/SMS Notification** - Receive messages when pre-defined events are available for viewing.
- **Overlays** - Text information about the time/date, camera, device, event, and cardholder photo can be superimposed on the screen.
- **Video Composite** - Up to a 5x5 composite can be used for viewing live video.
- **Observation Video** - Operators can initiate a recording at any time if they see something suspicious. They can also take Snapshot photos, Flag and Categorize observation video for later query, and monitor cardholder photo pop-ups.
- **Hardware Linkage** - Drag and drop access control hardware objects onto the Reflections Client for right-click manual operation from the video screens.
- **Multiple Monitors** - Spread live or recorded viewing over up to 4 monitors.
- **Camera Command and Control** - including PTZ control.



Operator Command: Snap Shot

Keri offers several options for customers, depending on their video monitoring and management requirements.

Feature	Reflections Express	Reflections	Reflections Plus
Recording on Event	√	√	√
View Recorded Video	√	√	√
View Live Video	√	√	√
Home DVR Functionality		√	√
Overlays		√	√
Video Composite		√	√
Command and Control (incl. PTZ)		√	√
Observation Video		√	√
Snapshot			√
Snapshot E-mail			√
Flagging & Categories			√
Advanced Search			√
Hardware Linkage			√
Included Video Clients	0	1	2
Number of Monitors	1	1	4
Recording Gateways (locations)	1	1	1



Video Event Alert

Presented By:

