

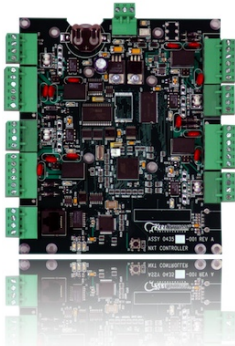
KeriGen Plus 4 – 4-door Access Control Expansion Pack



Step 1 - Contents for KeriGen Plus4, 4 Door Access Control Expansion Pack

1ea. NXT-4D

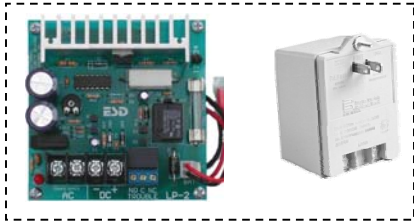
4ea. NXT-RM3



1ea. KPS-4-1

2ea. KPC-1

Switch, 5 Port
Note that switch
Appearance may vary



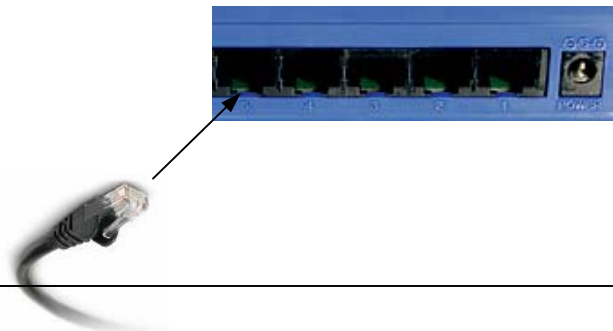
*Notes: The NXT-2D includes the enclosure, which is not shown above.
There may be an extra KPC-1 or switch that is not needed, depending on the configuration of the other controllers that are being installed*

Step 2 – Mount all Controllers and Readers in the desired locations

Step 3 – Choose which Scenario describes your current installation and follow its instructions. Ignore the other two Scenarios in Step 3.

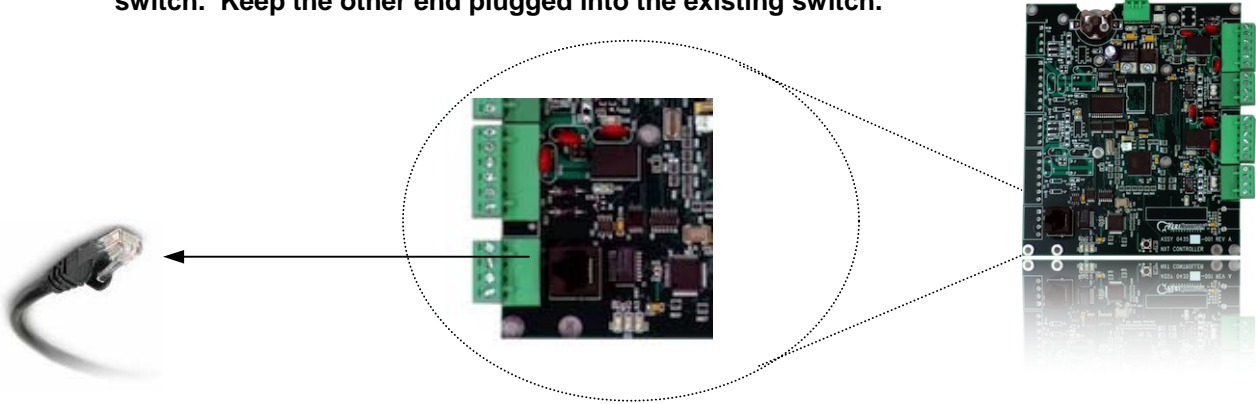
Scenario 1 - There is a switch present and there are available ports on it.

Plug one end of the KPC-1 into the switch.

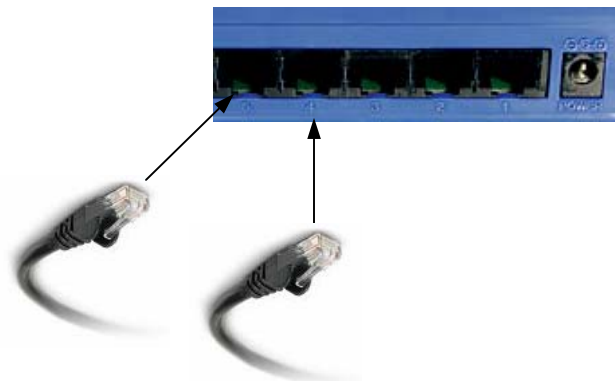


Step 3 – Scenario 2 - There is a switch present and there are no available ports on it.

Disconnect one KPC-1 that is already installed from one of the existing NXT-2Ds or NXT-4Ds and plug it into the new switch to make a network connection to the new switch. Keep the other end plugged into the existing switch.

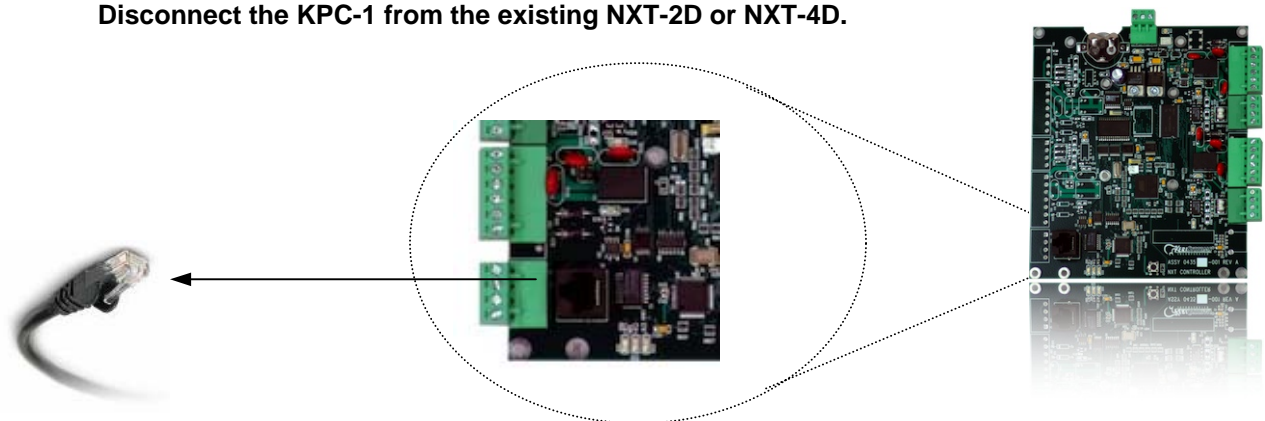


From the new switch, use the two new KPC-1s to make connections to the controller whom which the other KPC-1 was removed and new controller that is being installed.

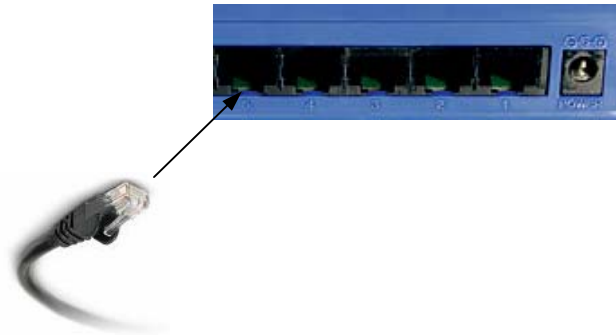


Step 3 – Scenario 3 – There is no switch present.

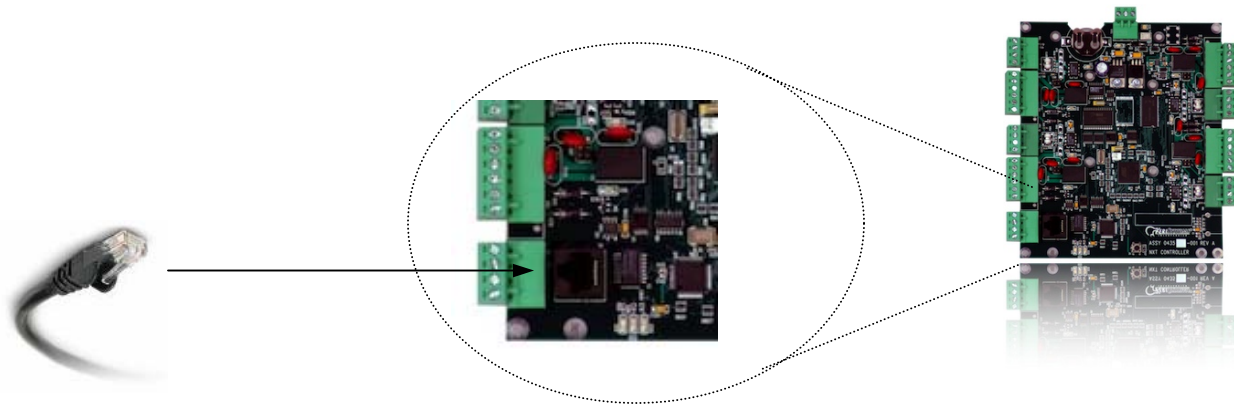
Disconnect the KPC-1 from the existing NXT-2D or NXT-4D.



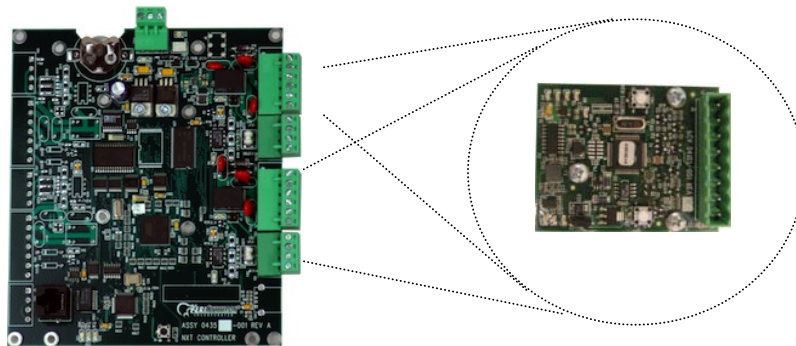
Plug the end of that KPC-1 that was disconnected into any port on the new switch and plug the new KPC-1 into any other port on the new switch.



Step 4 – Complete connections from the switch to each of the controllers that is disconnected using the KPC-1s and the RJ-45 jacks (J2) on the NXT controllers.

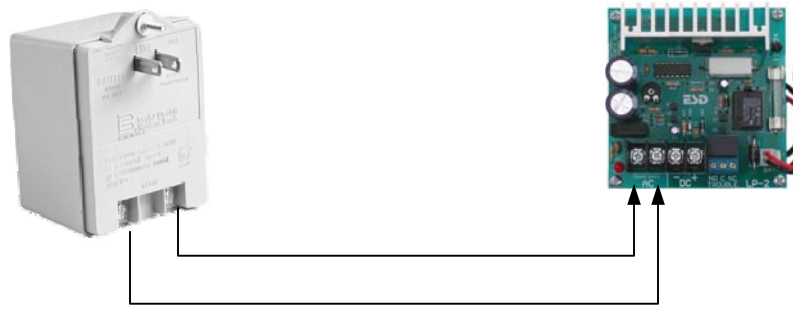


Step 5 – Plug in the 2 NXT-RM3s to the NXT-2D. The plastic standoffs will line up the connectors.



Step 6 – Configure the NXT-RM3s according to the quick start guide and hood up the readers. Individual details are not provided here because the NXT-RM3s are capable of interfacing to various forms of Wiegand interface devices as well as Keri MS series readers.

Step 7 – Connect the 2 two contacts for the transformer from the KPS-4-1 to the main board for the KPS-4-1. The KPS-4 main board should already be connected to the NXT-2D.

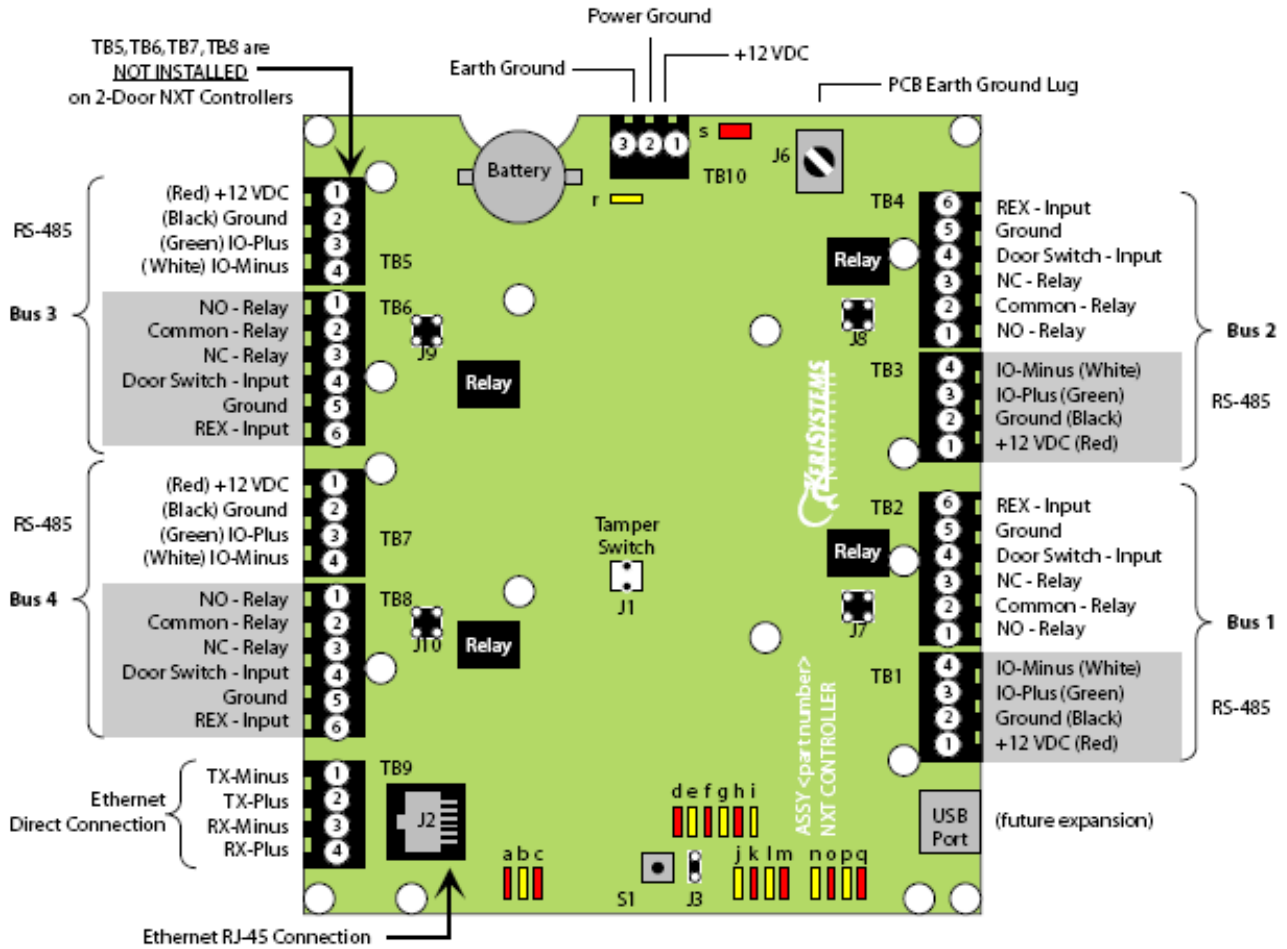


KeriGen Plus 4 – 4-door Access Control Expansion Pack

Step 8 – Connecting the Door Hardware

Use the Diagram below to hook up the remaining door hardware.

NXT-2D/4D Installation Drawing



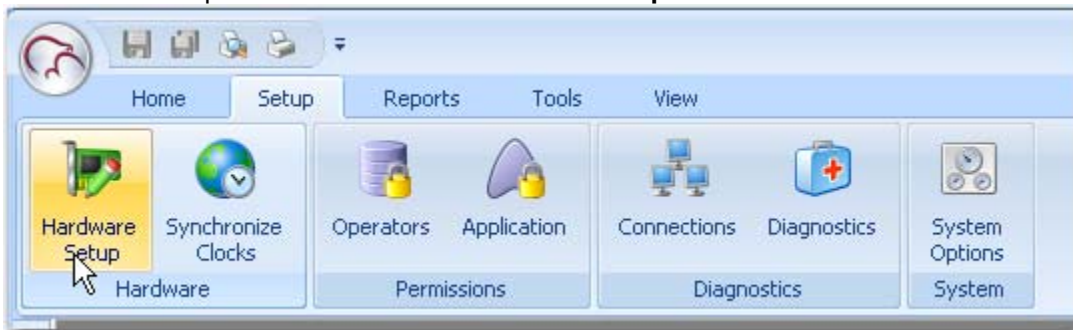
Step 9 – Auto Configuration

Start the Administrative Client Application.

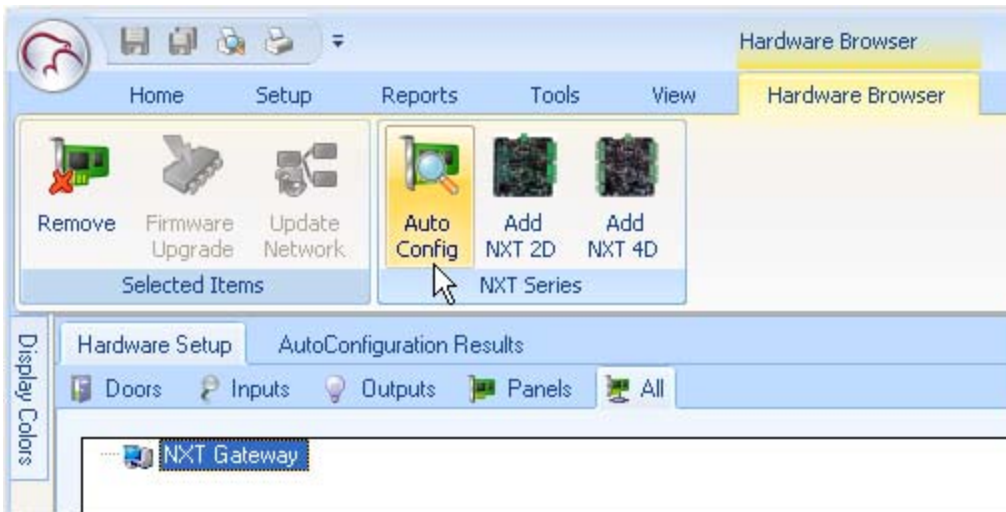
Autoconfig queries the local subnets for each NXT Gateway and returns a list of NXT Controllers found on the network.

Note: The DoorsNXTProxy.exe service must be allowed to communicate through any firewall installed on the computer running the NXT Gateway service. The DoorsNXTProxy Service is automatically added to the list of exceptions in the Windows Firewall during installation, however if another firewall is being used, it may prevent Autoconfig from finding the controllers on the Local LAN. The following Port numbers are used for Doors.NET communication and should be allowed to pass through a firewall – UDP 11434&11435, TCP 10020, 10030, 11000-11015 &11435.

- o Click on the Setup tab and then on the **Hardware Setup** button in the Hardware Toolbar.

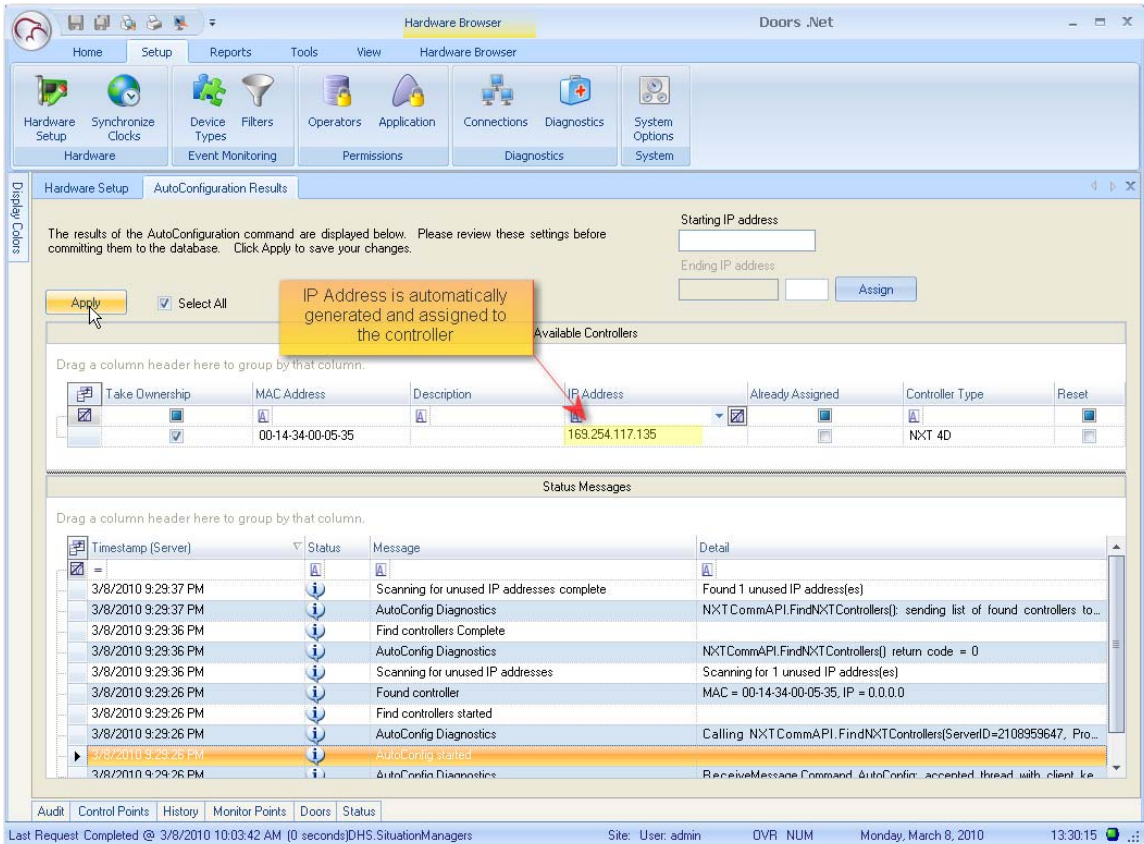


- o In the Hardware Setup tab, click on the All tab and then select the NXT Gateway. The Auto Config icon will appear in the tool bar. Click on the Auto Config button.

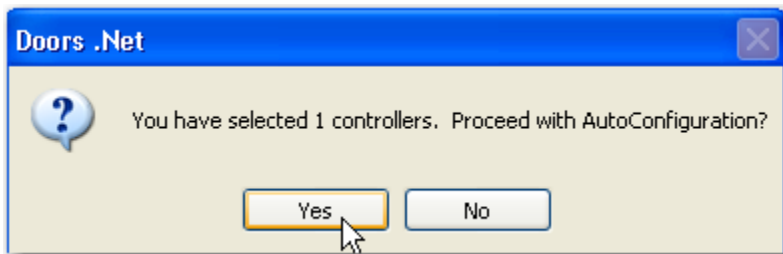


KeriGen Plus 4 – 4-door Access Control Expansion Pack

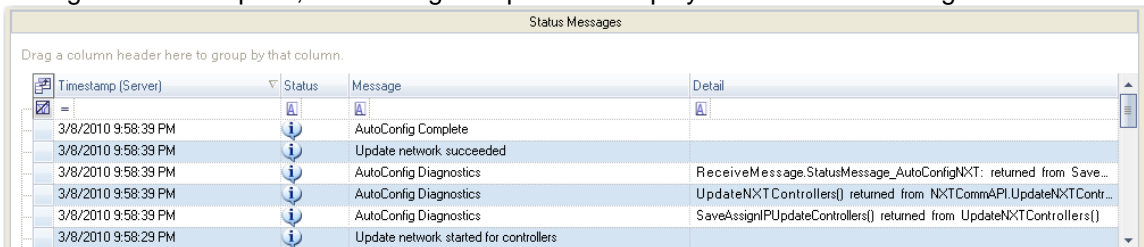
- The AutoConfigurationResults Tab will be displayed. Progress of the Auto Configuration will be shown in the **Status Messages** section. Detected controllers will appear in the **Available Controllers** section.



- Click Apply and then click Yes (in the dialog that appears) to continue the Auto Configuration Process.



- Auto Configuration will next assign the IP Address to the controller and update the controller's settings. Once complete, AutoConfig Complete will display in the Status Messages.

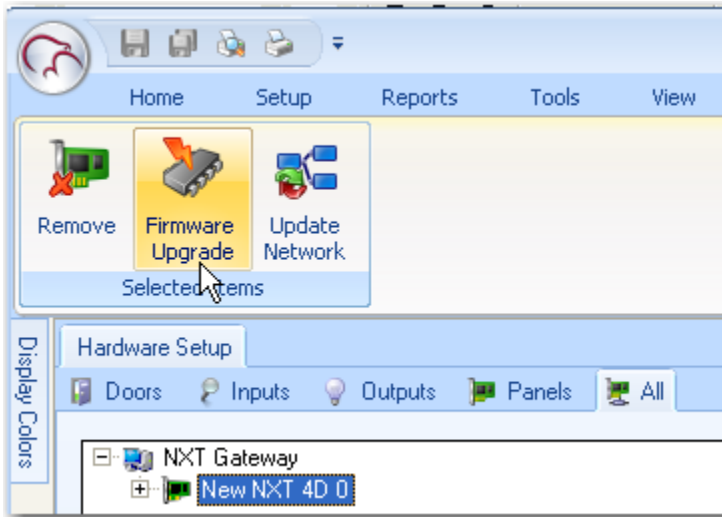


KeriGen Plus 4 – 4-door Access Control Expansion Pack

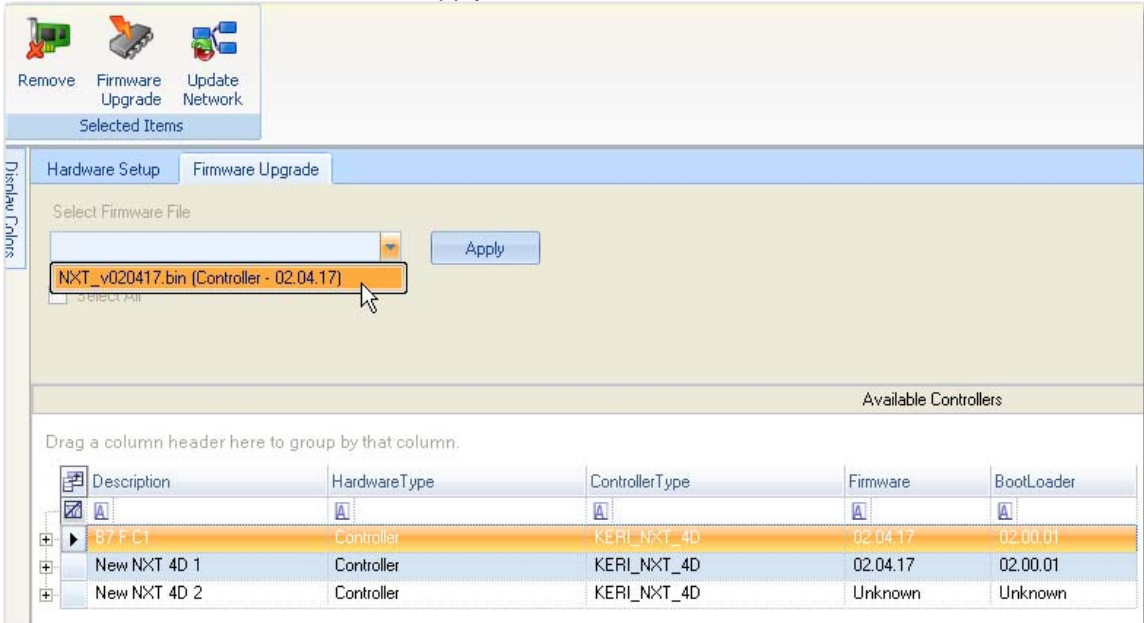
Step 10 – Firmware Upgrade

NOTE: When upgrading firmware, the Administrative Client must run on the computer that is running the NXT Gateway service.

- o In the Hardware Setup tab, select the All tab and then select a controller on the tree.
- o Click on the Firmware Upgrade button, which will be present in the Selected Items Toolbar ribbon.



- o Select the controller or controllers that need to be updated in the Available Controllers list and then select a firmware file and click apply.



- o A progress bar will appear on the right side of the selected controller tracking the progress of the firmware upgrade.
- o The Firmware Upgrade is complete once the progress bar for all selected controllers reaches 100%.