



Global Automation Module

The Global Linkage Service and related user interface screens provide a way to automate system functions and notifications system wide. The configuration of the Global Linkage consists of two parts. The Global Macro (what you want the system to do) and the Global Trigger (when do you want the Global Macro to execute) along with the source of the Global Trigger.

A Comprehensive mass notification system provides officials the ability to alert proposed stakeholders with minimal effort. There are multiple tiers to the alert process. Tier one alerts local security personnel in the immediate environment that an emergency is imminent. Tier two provides electronic mass notification messages through a high-tech electronic communication system that simultaneously sends programmed text messages to all concerned subscribers over any number of services and devices such as pagers, PDSs, cell phones, E-mail and more.

The Global Macro is a list of actions to perform. The macro can be executed by the following: Global Linkage Trigger Condition, Host Schedule (Activate or Deactivate), Manual (right click on the selected macro, then execute from the context menu), Map Client (Create a smart element of Global Linkage type) and System Calendar.

The Host Based schedule run on the Application Server using the local PC clock as the time source. These schedules can be used in the System Calendar, in a Global Trigger Condition as part of the evaluation criteria, or in a Global Macro item as an action item.

Support

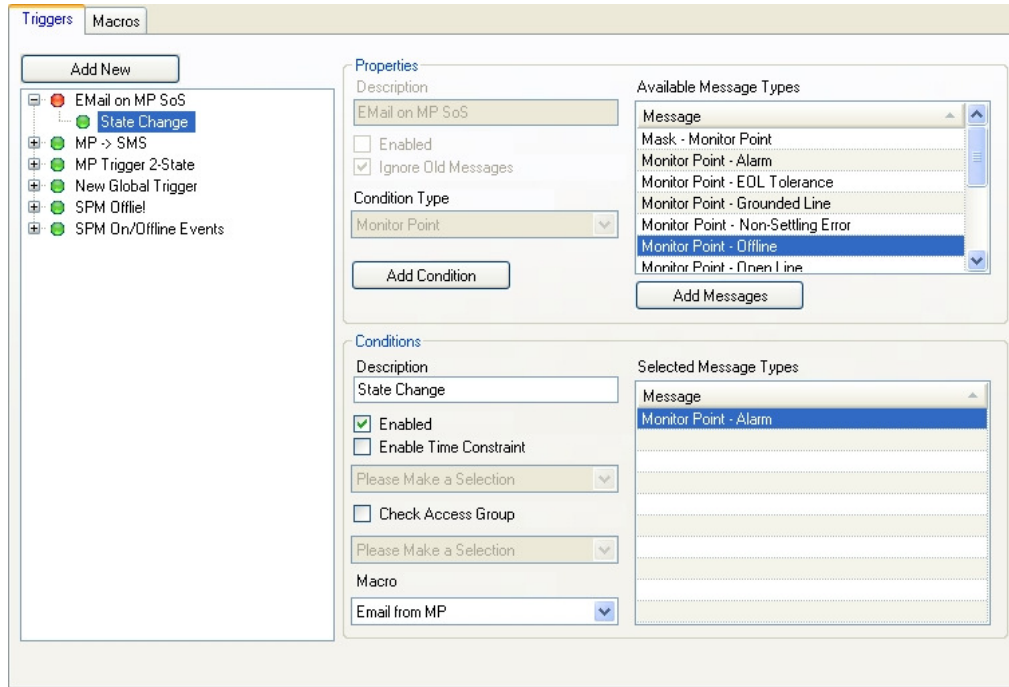
- Windows PC with .NET 2.0
- Windows 2003/XP/Vista
- Multiple Languages
- DHCP
- Eclipse 600 and 700

Features

- SMS Messaging
- Email
- Distribution Groups (by Cell Carriers)
- Capable of Providing Multiple Messages
- Can be used for non-emergency notification
- Global Linkage Macros
- Global Automation Calendar

Required License

- Floating Network
- Machine License



Each Global Trigger can have multiple conditions of the same condition type. Each condition of the Global Trigger is evaluated independently of the other conditions. This allows the configuration of multiple macros from the same source (i.e. a reader) with different macros executed based on the message type, time of day, or access group. A Global Trigger consists of many conditions with each condition having a description, an enabled property and other conditional selections. This allows you to quickly identify the purpose of each condition and to enable (default) or disable the condition as needed.

The System Calendar is the familiar Microsoft Outlook style calendar control with added appointment categories that execute system wide functions. This menu is available only to System Administrator log-ins. A number of new categories have been added to the traditional meeting, personal reminders, etc. that include archive, backup, global linkage, and direct hardware control. In addition, the Host schedules use the Holidays that are scheduled in this calendar. A recurrence engine is also provided and allows you to configure recurring events with ease. This allows you to configure the system to change operational mode on an ad-hoc basis to account for both planned and unplanned events.

In addition to the global capabilities, the local linkage tool is one of the most powerful features of the Eclipse system. This feature is a toolbox for installers to add custom scenarios for different installations without a the need for custom application software. All trigger conditions and procedure actions are executed by the SPM itself with no reliance on the PC.

Once configured with this menu, the SPM executes the procedure action lists when the conditions are met. A trigger condition is simply a transaction that meets the specified criteria. This may be generic (i.e. an active alarm event from any monitor point) to very specific (i.e. an access grant, at the rear door, by the cleaning crew, on the weekend, when an employee has been there that day.) The procedure action list can be one item or a list of items and can vary from unlocking a door to a complicated mantrap.

The software supports a default of 1,000 trigger conditions and 1,000 procedure action items.

*Content subject to change without notification. Copyright 2009 Keri Systems Inc.