

Eclipse Roll Call

Support

- Windows 2003/XP/Vista
- Multiple Languages
- Microsoft .NET 1.1
- DHCP
- Eclipse 600 and 700

Features

- Screen layout for each user
- Real-time roll call for each area, including last known location of cardholder
- Alerts for minimum and maximum count per area and access group.
- Real-time muster report with occupancy count and automatic printing
- Manual check in and check out

Required License

- Floating Network
- Machine License

Roll Call/Muster

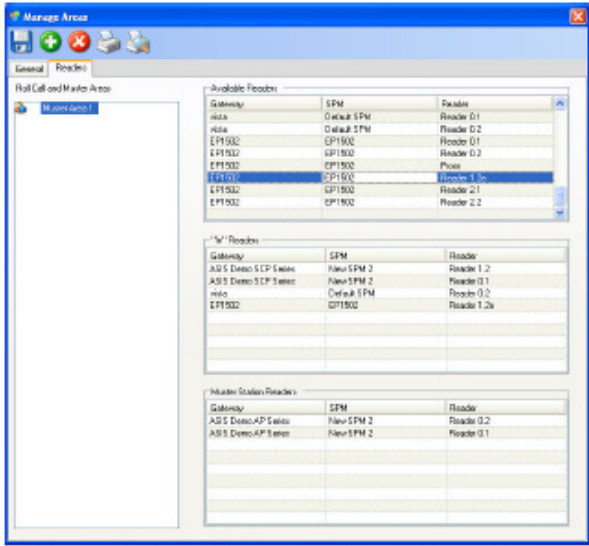
The Eclipse 700 Roll Call Client is an optional module that combines area roll call, muster reporting, and batch updates to cardholder readers.

The main feature of the Roll Call Client is to provide a list of cardholders that are "in" a designated area. The list is dynamic and updates in real-time as cardholders move throughout the facility. The list includes the first name, last name, access group, last reader used and timestamp for each cardholder. The occupancy counter updates as cardholders enter or leave the error. A selection is also available to show access by the cardholder in the designated time interval. This is useful when there is no exit reader in the facility.

The readers in each area are shown on the Readers tab and display the status of the reader as well as provide override controls (masking, reader mode) for each reader. This tab will dynamically update as different roll call areas are selected for display. The Roll Call client can also display the photo of the cardholder when the Show Photo option is enabled.

Roll call areas can also be nested within each other. This compensates for card holders who tailgate past the main entrance. When they do use their card inside the area, they are immediately checked in to all the roll call areas that the reader belongs to. A manual check out is provided to remove cardholders from the list if they have already left for the day.

ECLIPSE™ ROLL CALL SPECIFICATIONS

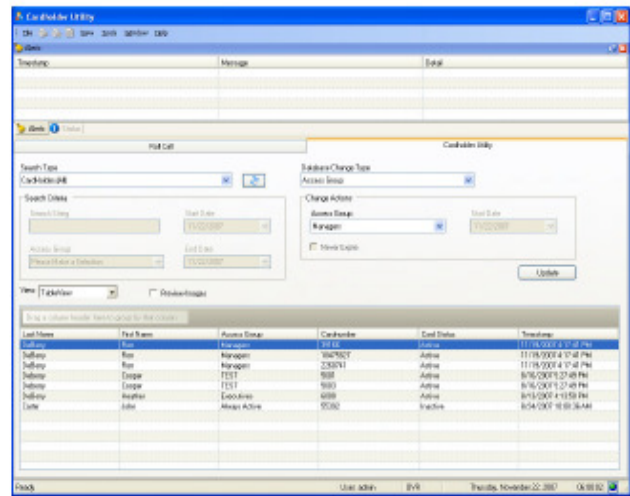


The Roll Call Client supports normal areas and muster areas. Normal roll call areas are designated by a group of "in" readers. The exit readers from the location are not included in the list. A muster roll call area includes the same definition of "in" readers as well as a designation of muster readers located outside of the main facility in designated safe zones. For each type of roll call area, different alerts can be set including minimum cardholders, maximum cardholders, minimum cardholder in an access group, maximum cardholders in an access group, and cardholder inactivity. The muster area has an option to automatically print the occupancy list at specific intervals.

The system administrator can designate which areas to allow manual check in or manual checkout of cardholders.

The Cardholder Utility tab allows the searching and display of the available cardholders by 50+ built-in search options. These include deactivated cards, cards with no activity for the specified interval, as well as custom fields.

Once the cardholder search results are displayed, the administrator can perform batch updates to the selected cardholders. These updates include changing access groups, deactivating/activating cards, changing activation/deactivation dates and other commonly performed tasks. Changes made to the cardholder records are audited (including previous value and new value of each item changed) and are immediately downloaded to all controllers.



*Content subject to change without notification. Copyright 2009 Keri Systems Inc.