

# Detach/Attach Doors.NET SQL Databases

## Application Note

---

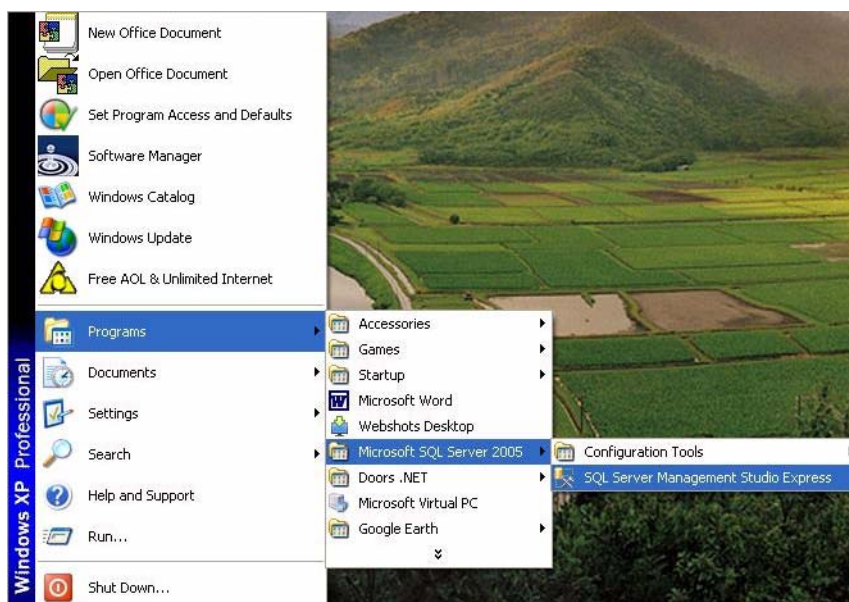
This procedure only pertains to Doors.Net databases using Microsoft SQL Server 2005 installed with Doors.NET. If an SQL database is directed to an existing full version of SQL, these procedures do not apply. For backup and restore instructions in that case, consult an IT administrator.

This procedure can be used to move an existing Doors.Net database from one PC to another.

*NOTE: Two or more Doors.NET or DoorsNXT databases using the same controller MAC addresses and TCP/IP addresses on the same LAN subnet will result in numerous hardware communication faults.*

## 1.0 Detaching an SQL Database

1. First locate the SQL 2005 Server Management Studio Express.



2. Logon using Windows Authentication then click on "Connect."

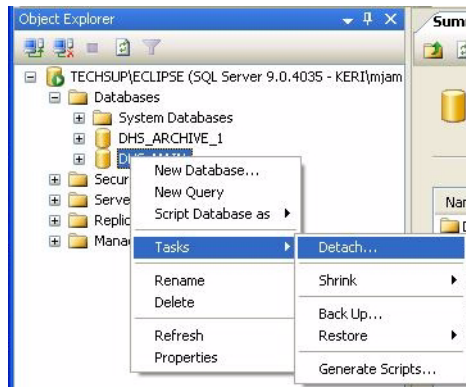


# Detach/Attach Doors.NET SQL Databases

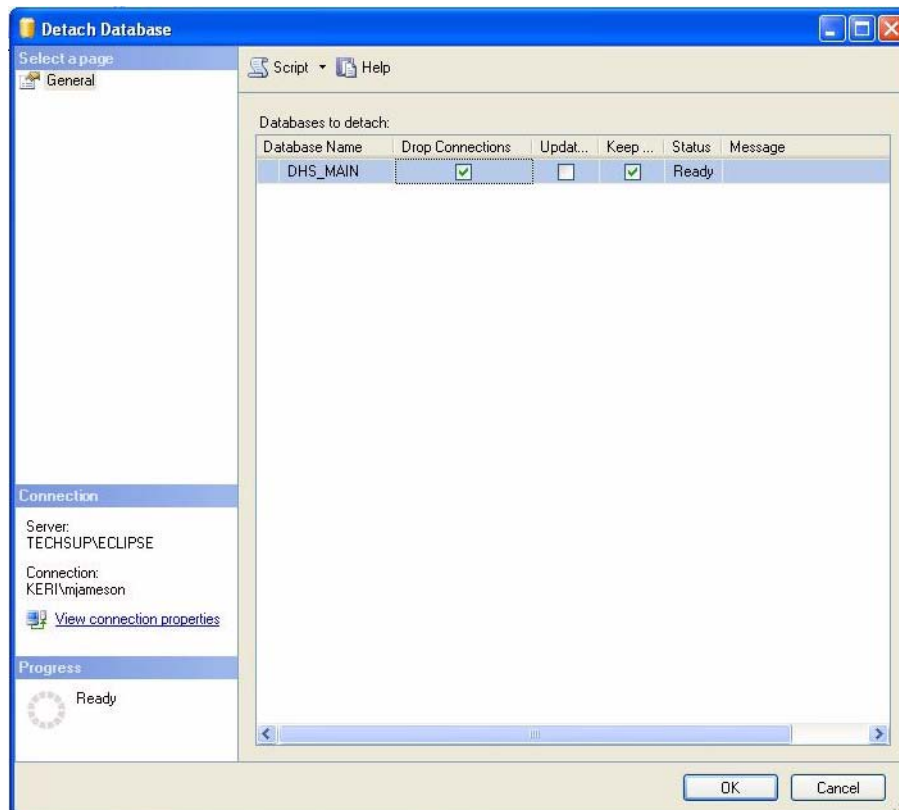
## Application Note

---

- Expand "Databases" in the left hand pane, right click on, "DHS\_MAIN", select "Tasks" from the menu and then select "Detach."



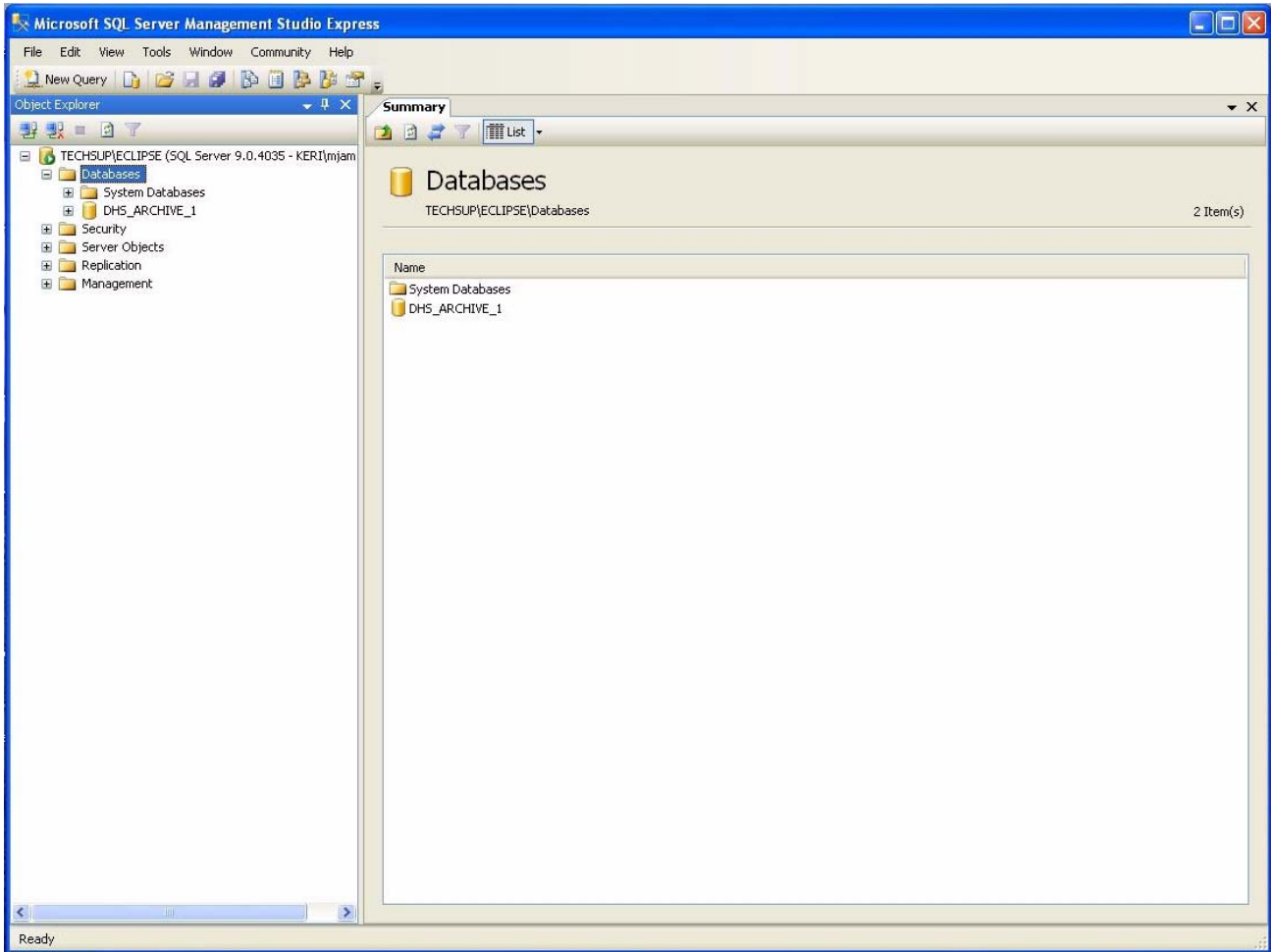
- From the "Detach Database" window check the "Drop connections" box.



# Detach/Attach Doors.NET SQL Databases Application Note

---

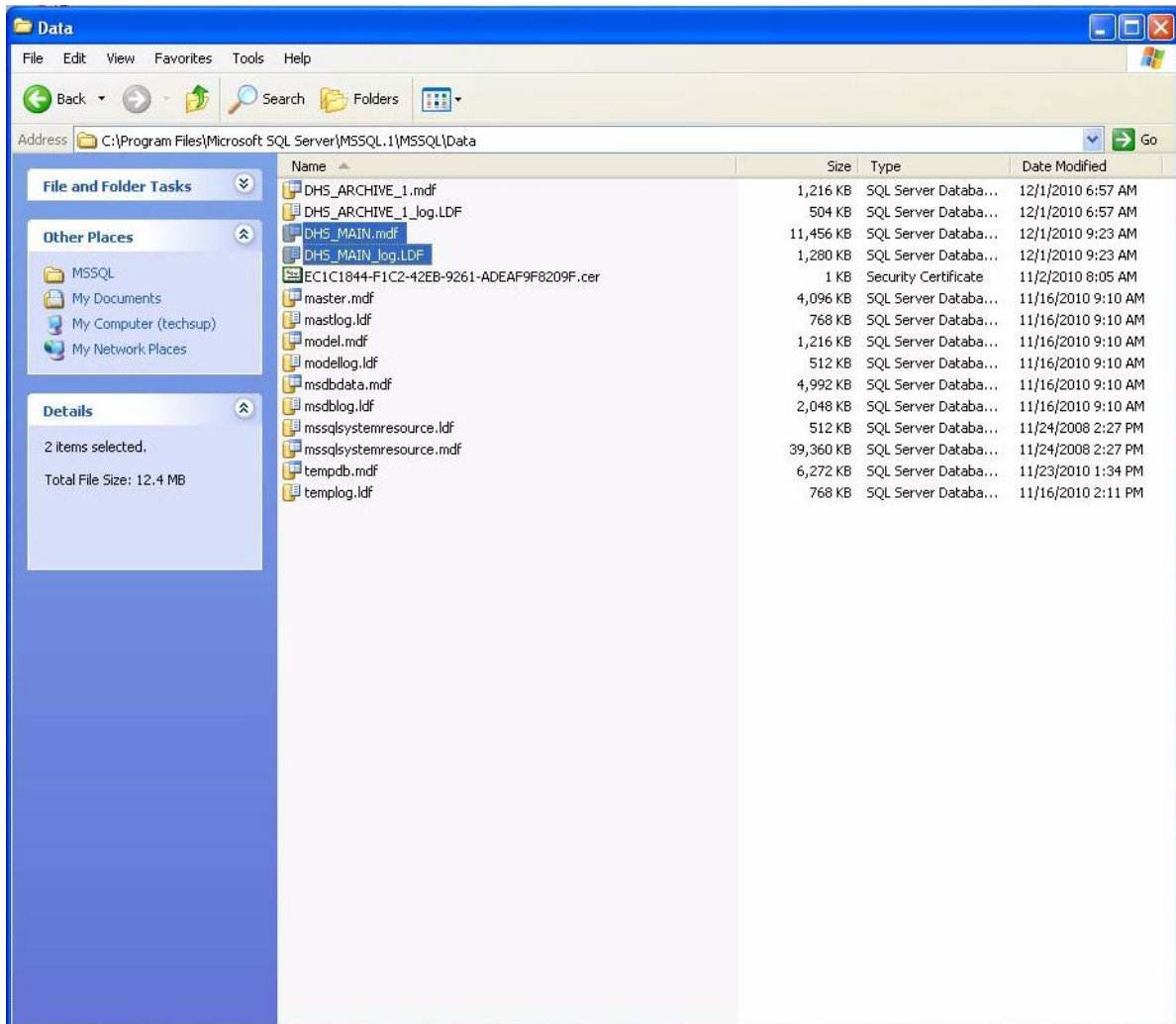
5. Click "Ok" and the database will no longer be visible under SQL's "System Databases."



# Detach/Attach Doors.NET SQL Databases

## Application Note

- Two files will be available (DHS\_MAIN.mdf and DHS\_MAIN\_log.mdf) that can be copied and moved to another PC that has been prepared with a fresh install of Doors.Net and SQL Server 2005. These files must be copied to same directory shown in the image below.



*NOTE: The detach procedure will have to be performed on the target PC's SQL database. The two files described in Step 6 above will have to either be renamed or deleted before attaching the populated SQL database that is intended to replace the existing blank database.*

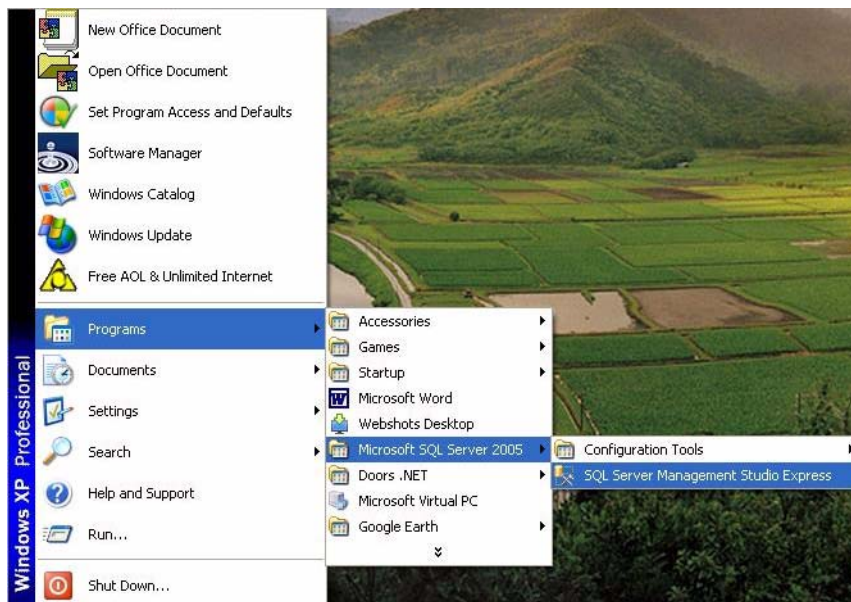
# Detach/Attach Doors.NET SQL Databases

## Application Note

---

## 2.0 Attaching an SQL Database

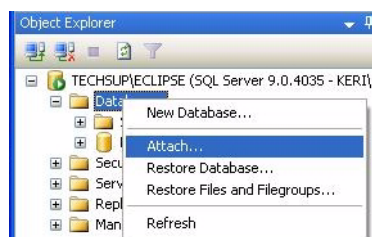
1. First locate the SQL 2005 Server Management Studio Express.



2. Logon using Windows Authentication then click on "Connect."



3. Right click on "Databases" and select, "Attach" from the menu.

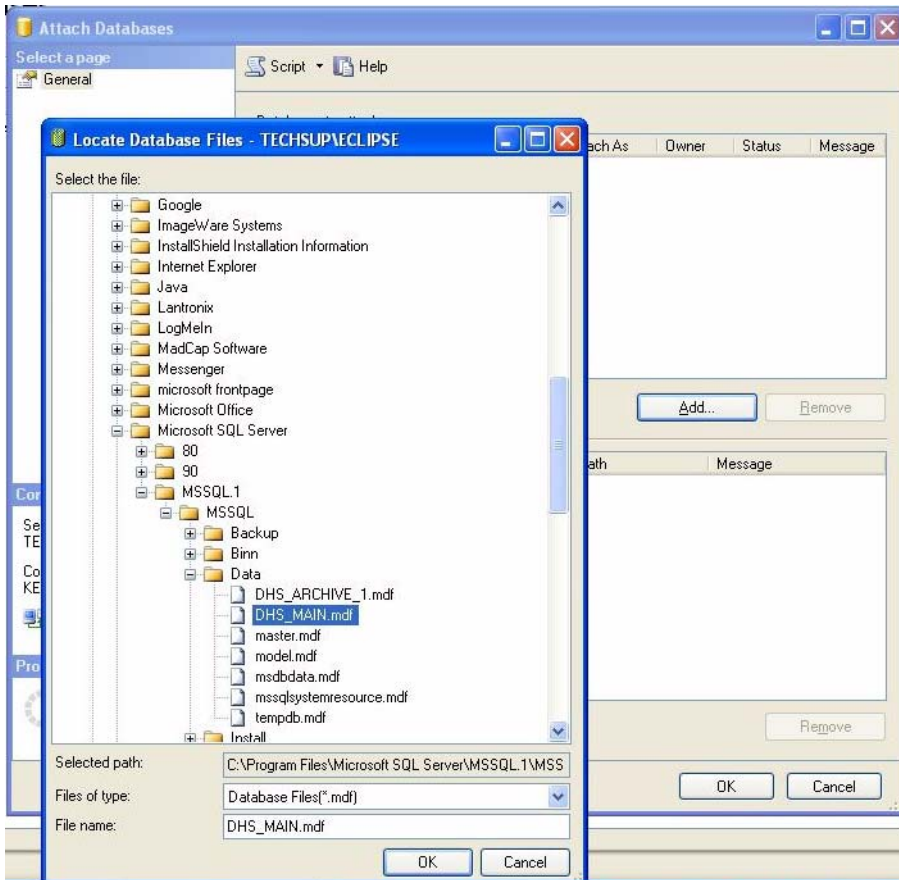


# Detach/Attach Doors.NET SQL Databases

## Application Note

---

- Click on the add button and double click on the "DHS\_MAIN.mdf" file.

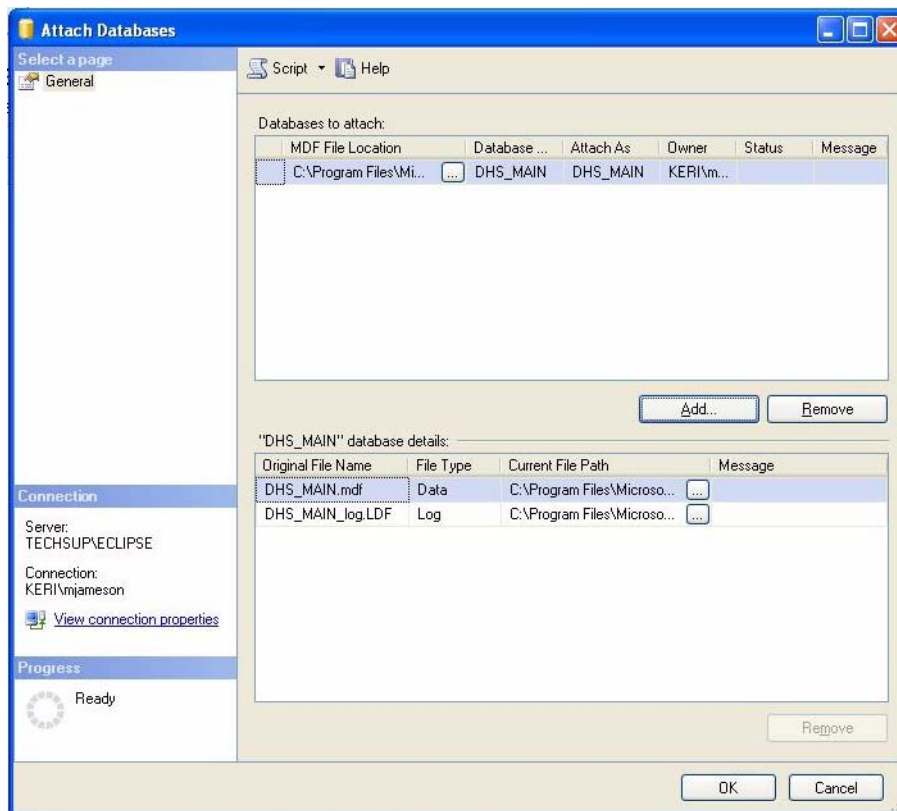


# Detach/Attach Doors.NET SQL Databases

## Application Note

---

5. Click "Ok" on the "Attach Database" window and allow it to run.



6. On the lower left of the, "Attach Database" window a green progress wheel indicates the progress of the procedure.

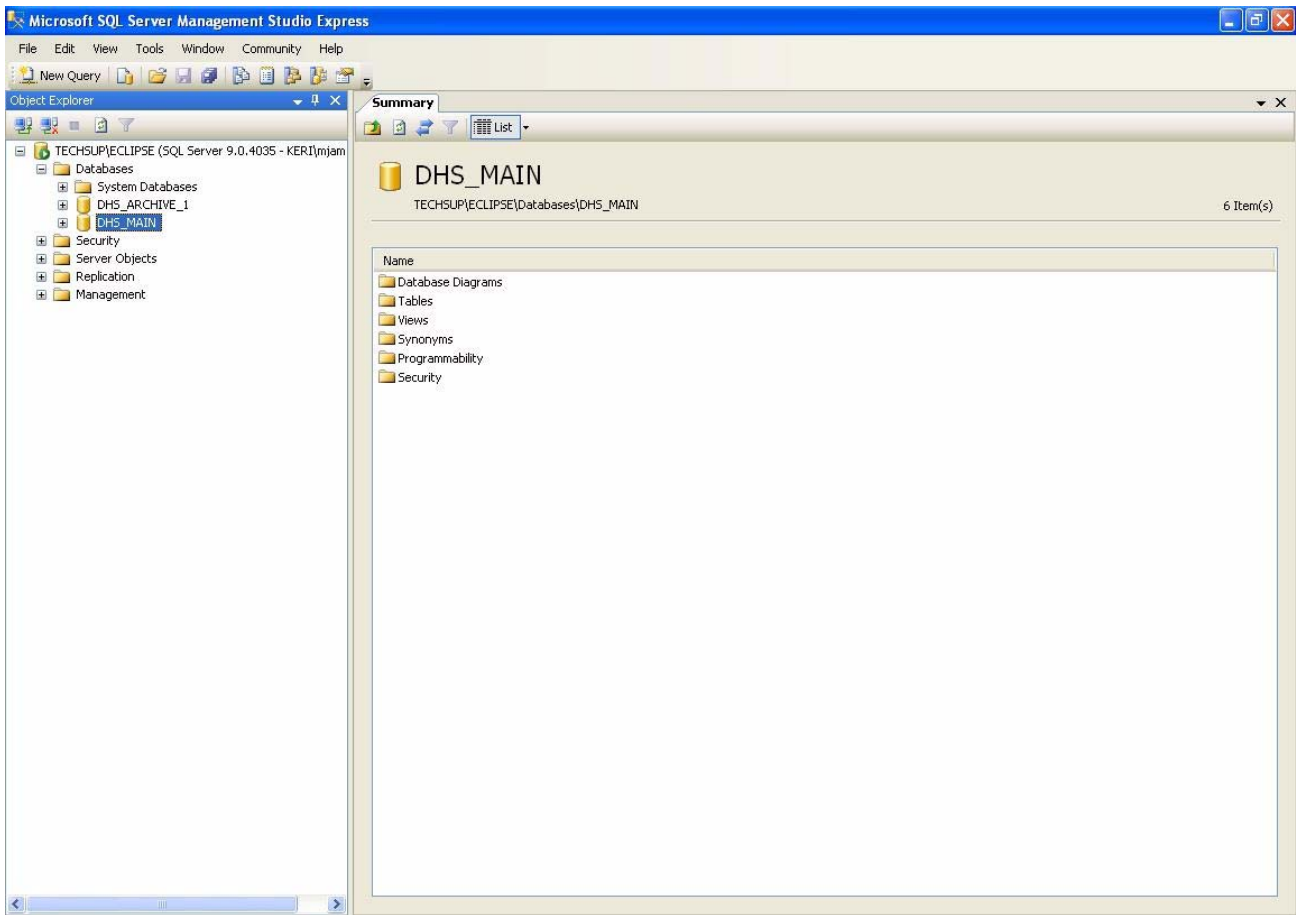


# Detach/Attach Doors.NET SQL Databases

## Application Note

---

- When the procedure is completed, the DHS\_MAIN database will now be present under "Databases."

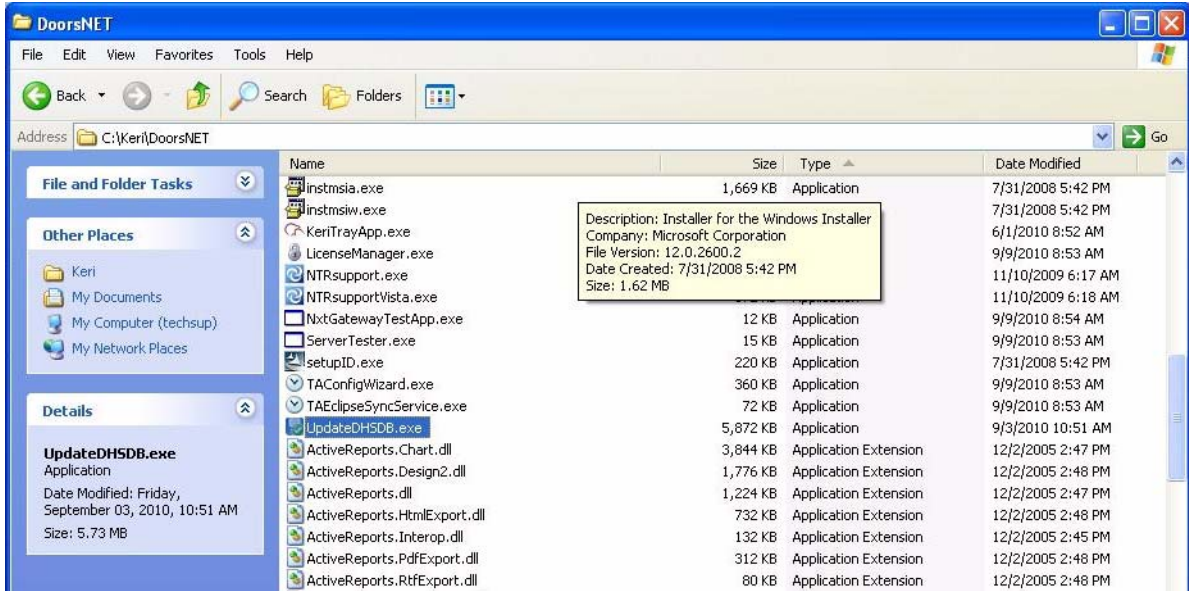


# Detach/Attach Doors.NET SQL Databases

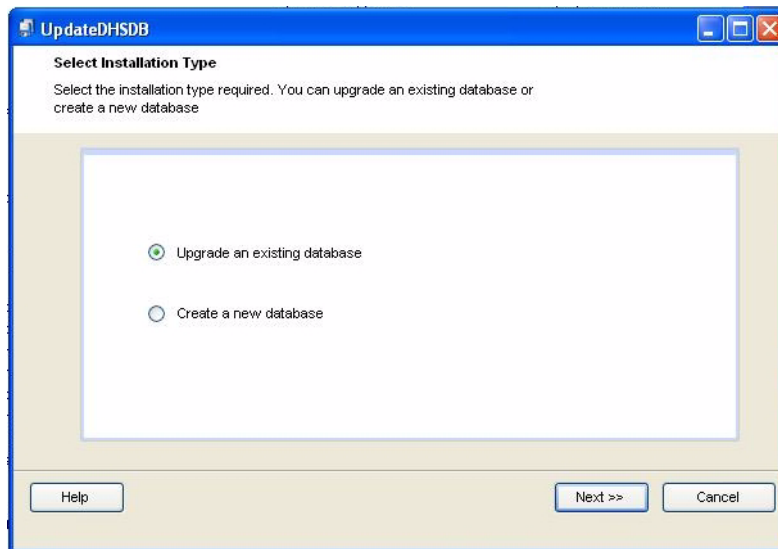
## Application Note

### 3.0 Running UpdateDHSDB

1. First locate the "Keri" folder normally located on the C:\ drive of the PC containing both Doors.Net and the SQL database. Double click on the "UpdateDHSDB.exe" executable. Allow up to several minutes for it to open.



2. When the UpdateDHSDB window appears, select, "Upgrade existing database."

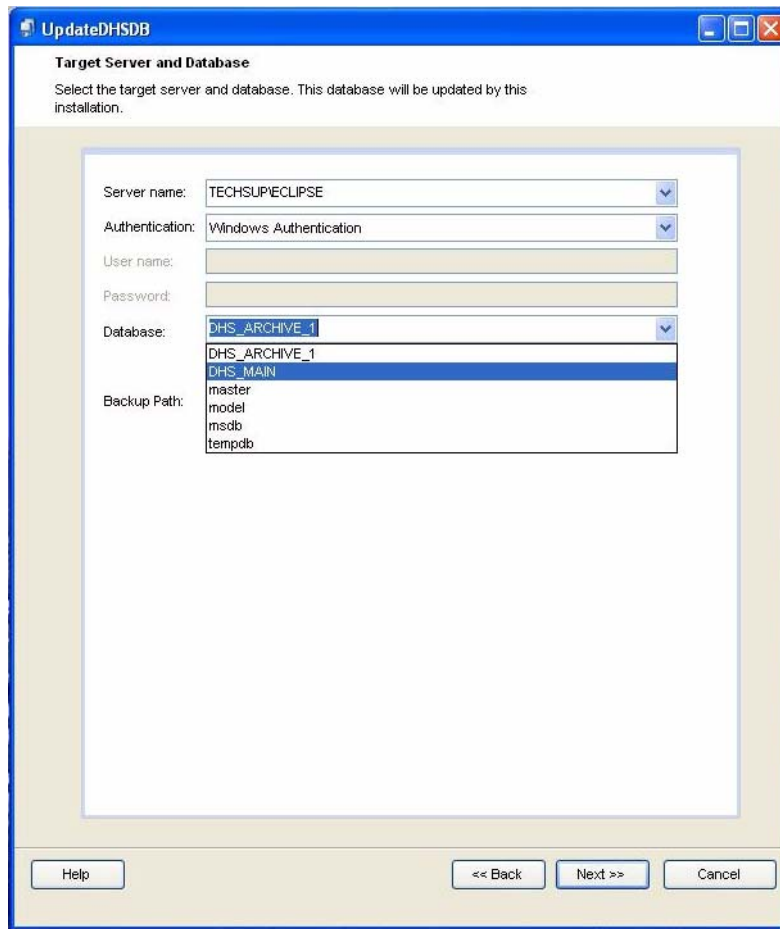


# Detach/Attach Doors.NET SQL Databases

## Application Note

---

3. Choose the sever on which the SQL database resides, then select DHS\_MAIN under "Database", click on "Next", then "Finish."

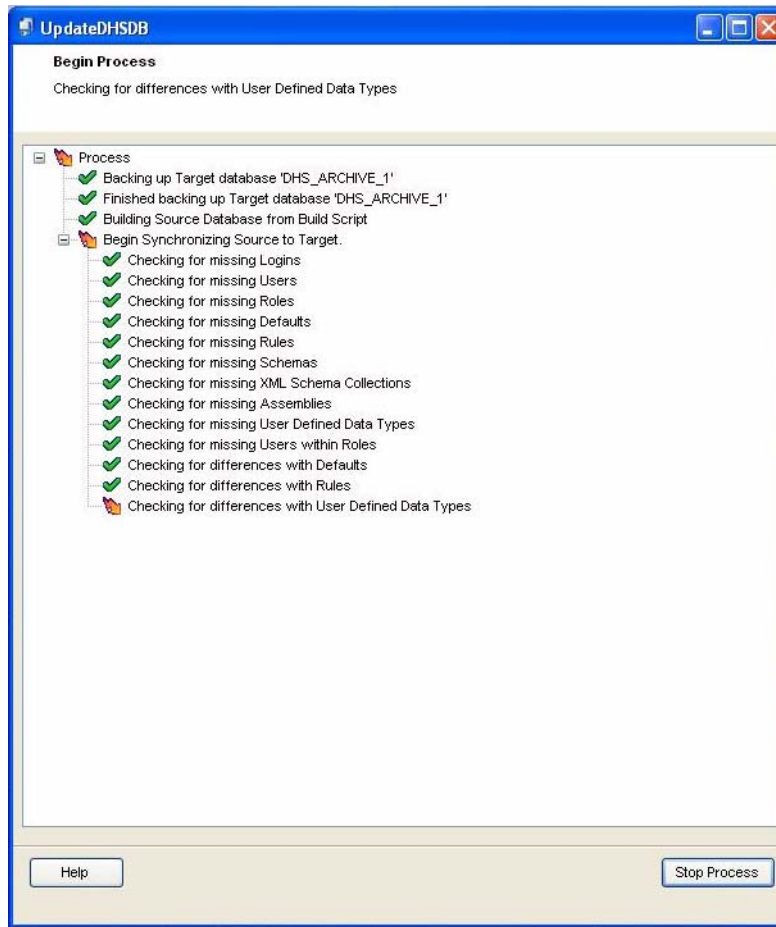


# Detach/Attach Doors.NET SQL Databases

## Application Note

---

4. Allow the program to run.

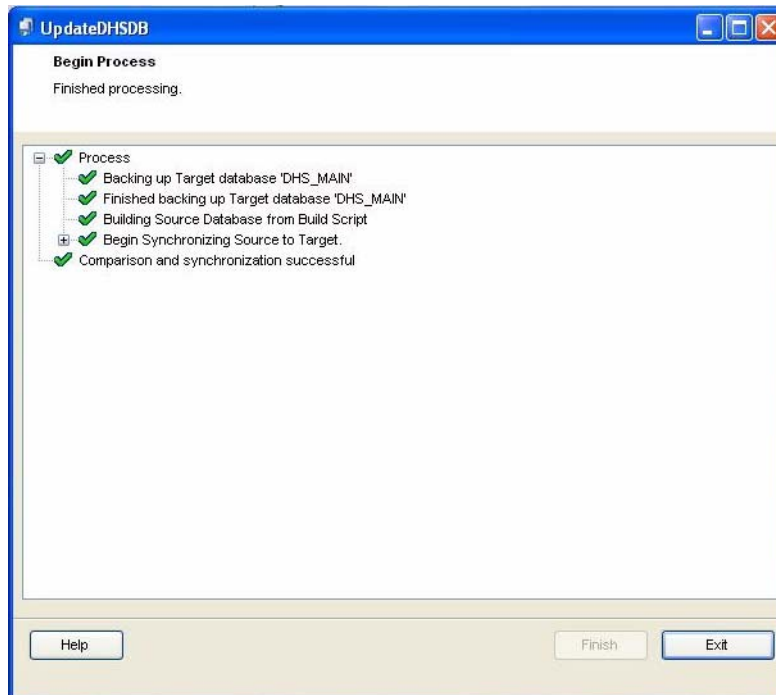


# Detach/Attach Doors.NET SQL Databases

## Application Note

---

5. When finished, click on "Exit" to finalize this procedure.



## 4.0 Contact Keri Systems

Keri USA	Keri UK, Ireland, Europe
2305 Bering Drive San Jose, CA 95131	Unit 17 Park Farm Industrial Estate Ermine Street Buntingford Herts SG9 9AZ UK
Telephone: (800) 260-5265 (408) 435-8400	Telephone: + 44 (0) 1763 273 243
Fax: (408) 577-1792	Fax:+ 44 (0) 1763 274 106
Web: <a href="http://www.kerisys.com">www.kerisys.com</a>	Web: <a href="http://www.kerisystems.co.uk">www.kerisystems.co.uk</a>
E-mail: <a href="mailto:sales@kerisys.com">sales@kerisys.com</a> <a href="mailto:techsupport@kerisys.com">techsupport@kerisys.com</a>	E-mail: <a href="mailto:sales@kerisystems.co.uk">sales@kerisystems.co.uk</a> <a href="mailto:tech-support@kerisystems.co.uk">tech-support@kerisystems.co.uk</a>

End of document.