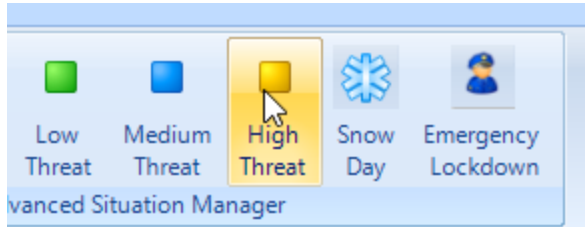




Advanced Situation Manager

Introduction



Advanced Situation Manager is an extension of the Global Lock and Global Unlock features that are available. You can not only use the Situation Manager for unlocking and locking doors but you can create different system behavior for different types of threat levels.

The feature allows you to configure the system to behave in a certain way in the event of certain emergency situations. For example, under a heightened level of security you may wish for certain doors in the facility to be set to Card + PIN mode, such as store cupboards, server rooms or other rooms that contain high-value items.

Another example of when the feature could be used is in an emergency situation in a hospital. During a facility lockdown you may wish to prevent entry or egress through perimeter doors, but to allow cardholder access to staff at certain interior doors, such as between wards.

Note: This feature is only supported on PXL, NXT Mercury Powered and Mercury controller/hardware types. It is NOT supported with the standard NXT hardware.

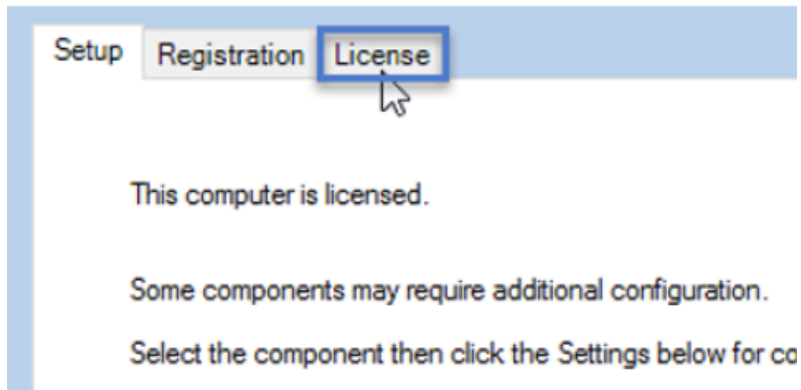
License Requirements

Verify Your License has the Feature Enabled

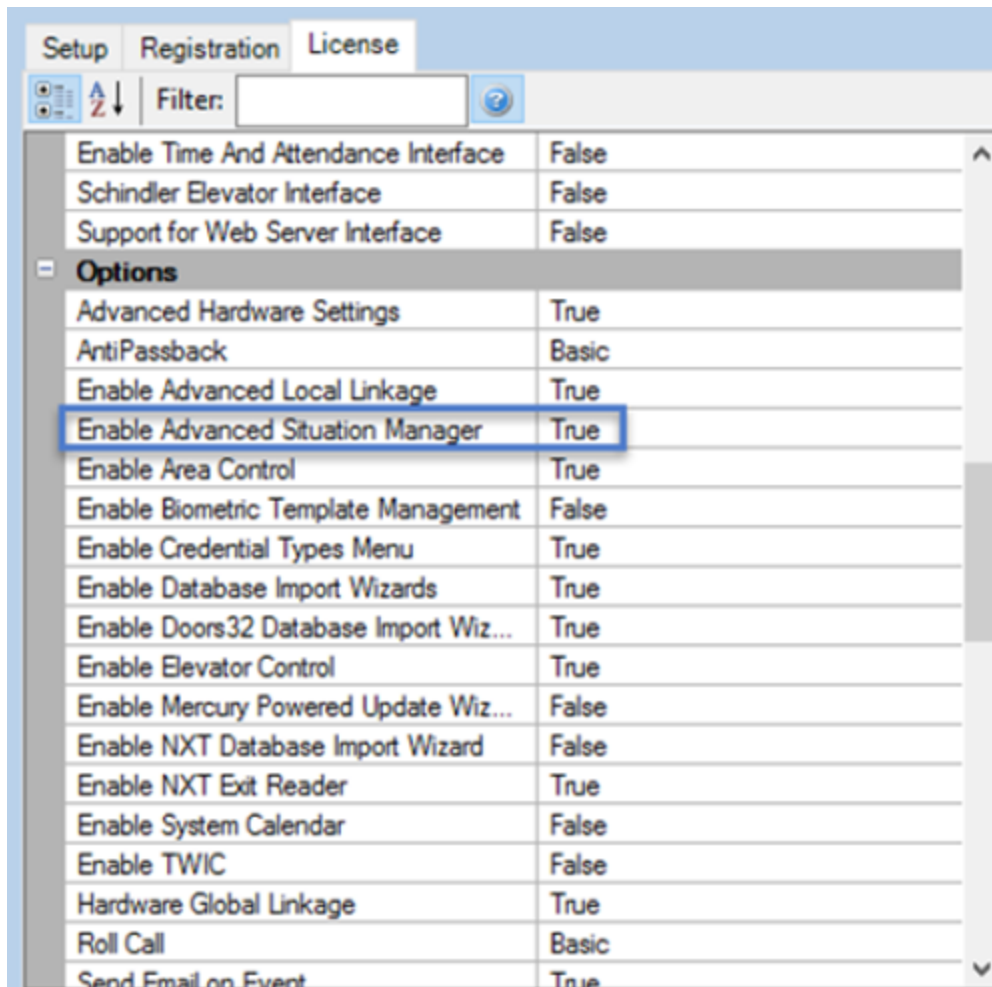
Advanced Situation Manager is a licensed feature, so it must be enabled on your license. To check if the feature is enabled:

1. Go to the Start Menu >> All Programs/Apps >> Doors.NET >> License Manager.
2. On the right side of the License Manager, click on the license tab.

Advanced Situation Manager



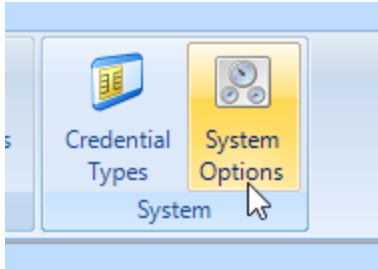
3. Scroll down the license settings until you locate Options.
4. Look for **Enable Advanced Situation Manager** and verify it is set to True.



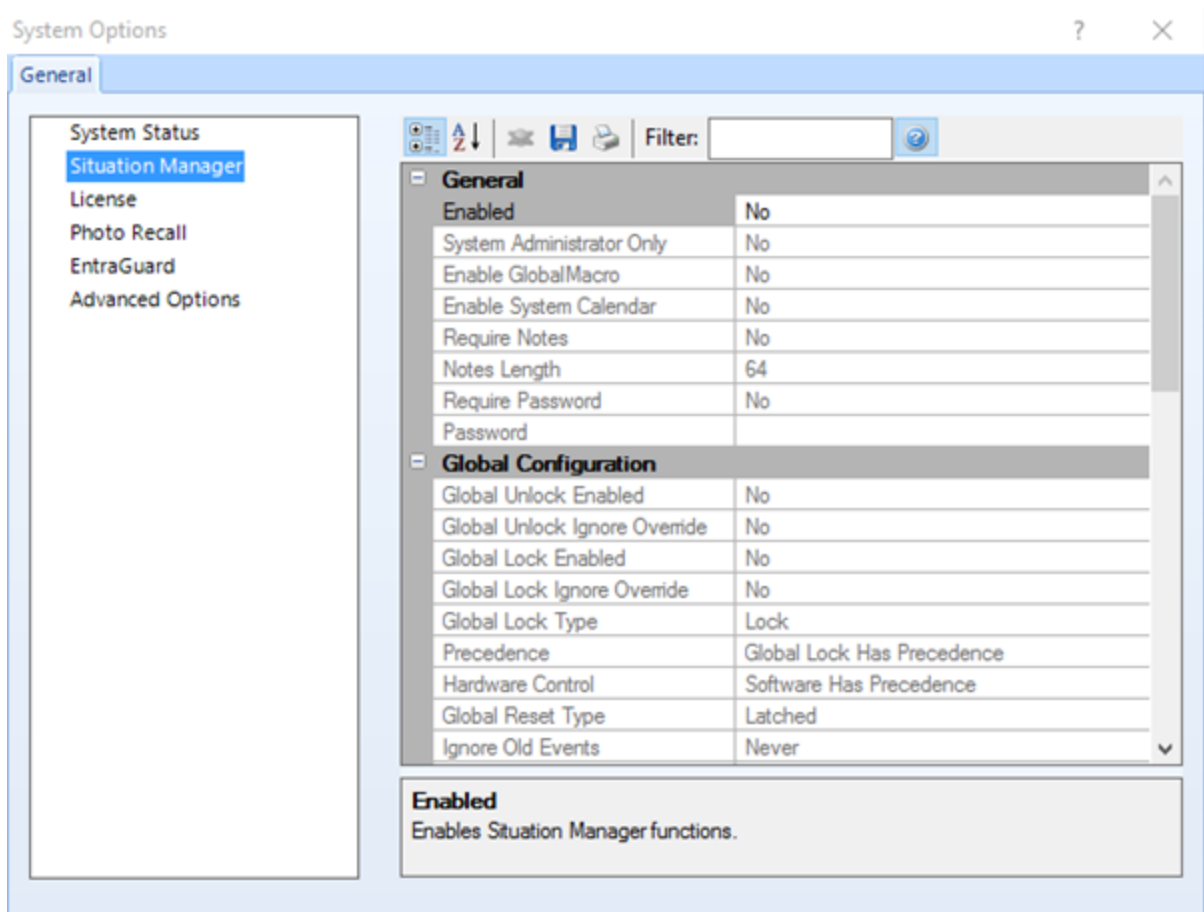
Advanced Situation Manager

Enable the Feature

1. Log into the software
2. Go to Setup >> System Options




3. Select **Situation Manager** from the left hand side of the window.



4. **Enable** - Set to Yes to enable this feature.

Advanced Situation Manager

5. **System Administrator Only** - When enabled, the Situation Manager functions are only shown to users that are 'System Administrators'.
6. **Enable Global Macro** - This must be enabled if you want to incorporate Situation Manager into Global Linkage actions.
7. **Require Notes** - When enabled, any software operator that attempts to change the Situation Manager Threat Level will be required to enter notes to explain why Situation Manager will be changed.
8. **Notes Length** - Requires the system operator to enter a minimum number of characters when entering their notes.
9. **Require Password** - When enabled, it requires the system operator to enter a certain password when changing the Situation Manager status...When this setting is enabled you are required to enter the password that the operator will use.

Click the save  icon when you have enabled the feature.

Threat Level Configuration

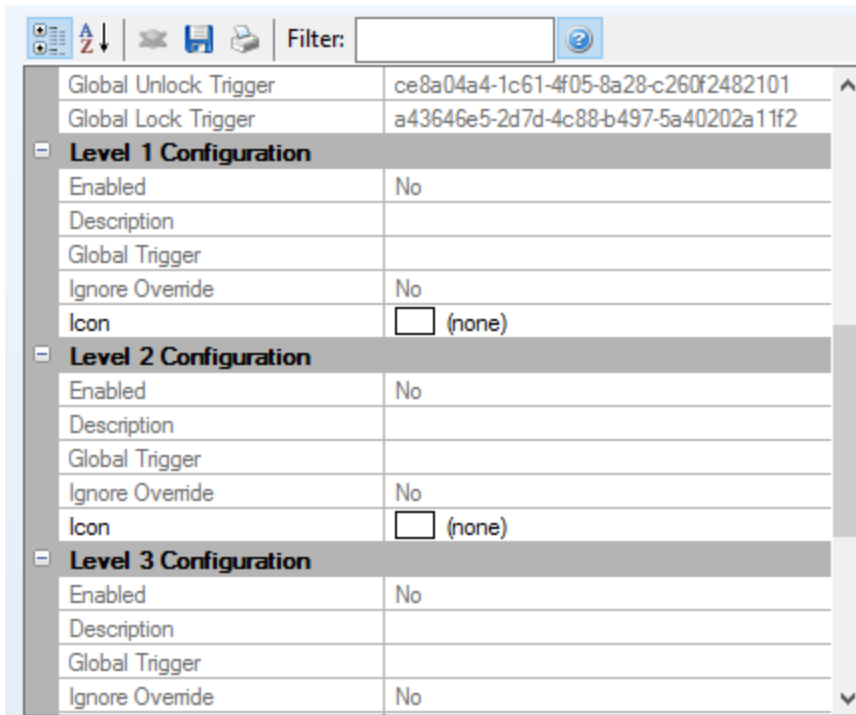
You now have to configure the various threat levels for the system, you can define up to five in total. These threat levels determine how readers on the system behave during certain situations. For example, a low threat level might require certain doors to be completely unlocked, a medium threat level certain doors might require a card and PIN for entry and during a high threat level certain doors on the system might be put into Lock-down mode (where cardholders will not be able to gain access and the RTE/Exit button will also be disabled).


Situation Manager can be applied to all doors on the system or on just one door, it's completely flexible.

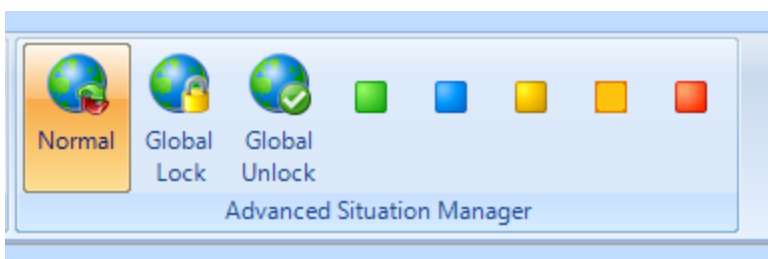
Note: Situation Manager is NOT supported with the standard NXT hardware.

1. Scroll down the Situation Manager settings until you see the Level Configurations.

Advanced Situation Manager



2. Enable all 5 of the levels, then save .
3. Close the System Options window
4. Go to the home tab.
5. You will see additional icons for the Situation Manager, these are the default icons that represent each of the enabled threat levels.



Note: You can easily replace these icons should you wish to (ideal dimensions are approx. 55 x 55 pixels).

Advanced Situation Manager

Edit Threat Level Icons

As you can see the default icons are colored squares to represent each of the 5 threat levels (1 = green, 2 = blue, 3 = yellow, 4 = amber and 5 is red). This section explains how you can replace or add text to these icons.

1. Return to Setup >> System Options >> Situation Manager.
2. Scroll down to Level 5 Configuration.
3. Enter a new description for level 5. For example: 'Emergency Lockdown'.

Icon	<input type="checkbox"/> (none)
Level 5 Configuration	
Enabled	Yes
Description	Emergency Lockdown
Global Trigger	
Ignore Override	No
Icon	<input type="checkbox"/> (none)

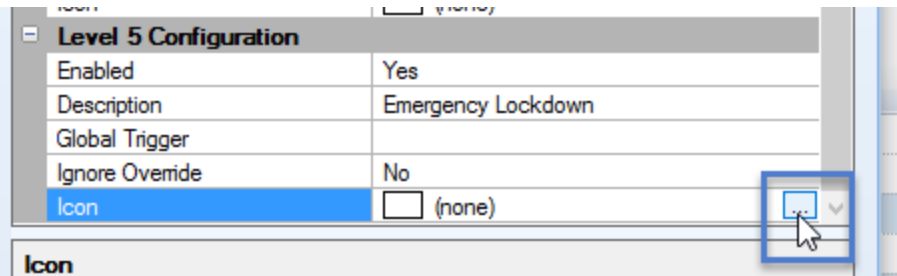
Description

4. Create a new image to replace the default red square icon. We recommend using .jpg, .png or .gif format and aim to keep the dimensions less than 50 x 50 pixels.
5. Save the new image into the **C:\Keri\DoorsNET** directory (such as in the folder named Icons).



6. From the level 5 configuration, click on the icon field.
7. Click the browse icon and find the replacement icon.

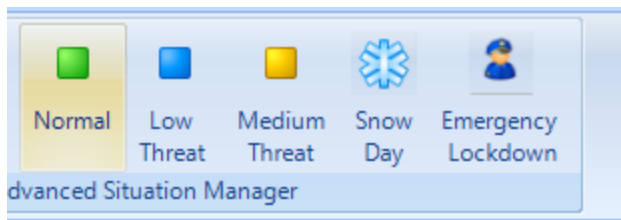
Advanced Situation Manager



8. Save the settings and close the System Options window.
9. Return to the home tab and you will that the level 5 icon has changed and the added description is now showing.



10. Repeat steps 3 - 9 for any of the other threat level icons you wish to edit.

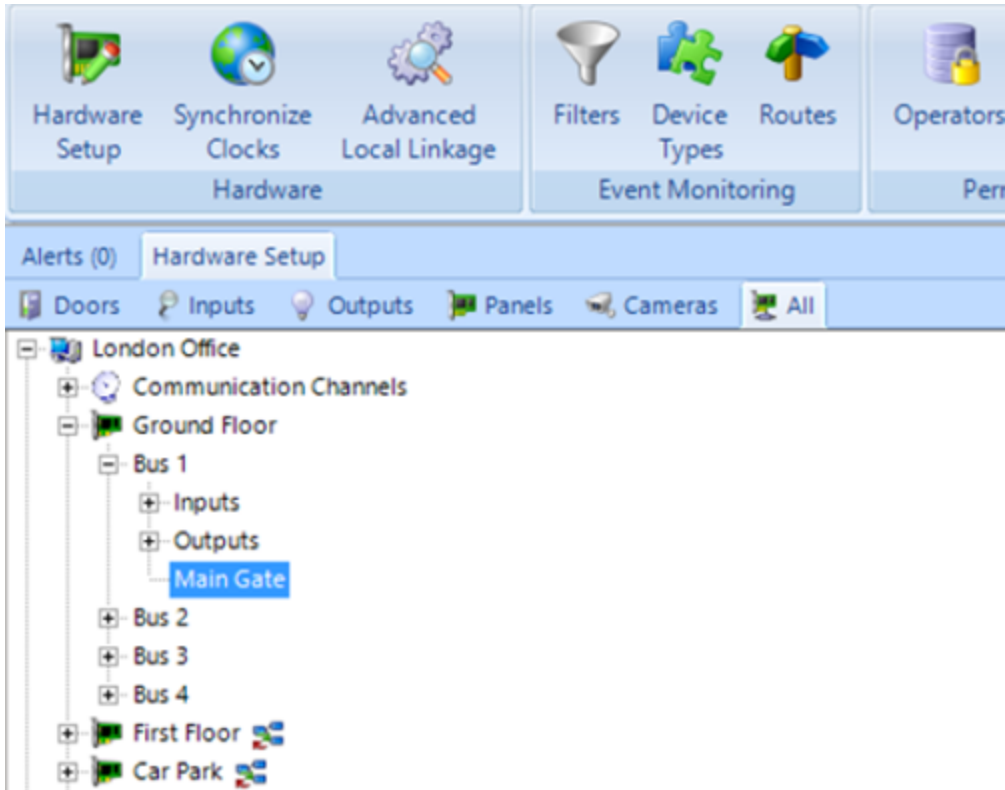


Configure the System Behavior

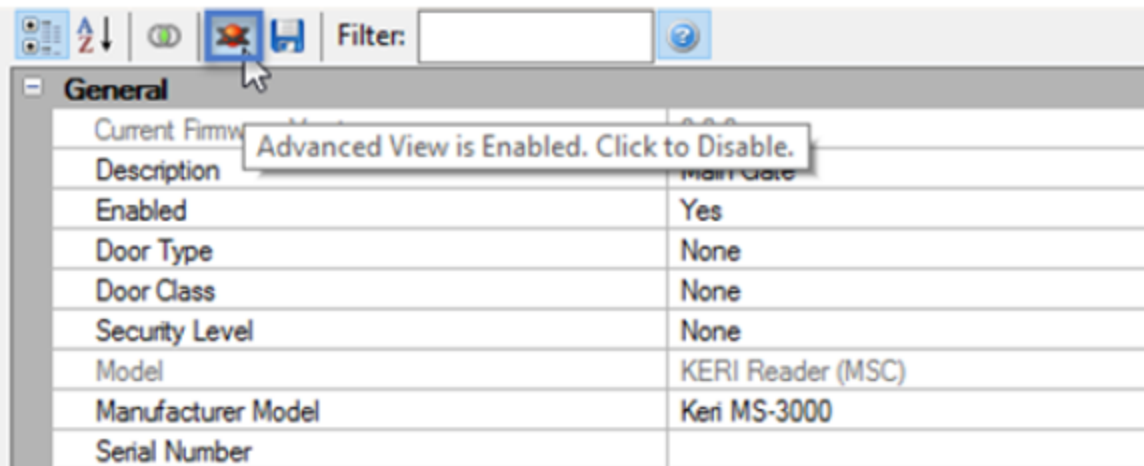
The next section is probably going to be quite time consuming as it requires you to define how certain readers on the system will behave during the different threat levels. For example, an exterior door may need to be set to Lockout or Lockdown when the system is in Emergency Lockdown or High Threat level situations. Any readers that have not been configured for Situation Manager will continue to operate as per the settings within the controller properties.

Advanced Situation Manager

1. Go to the hardware tree and select one of the readers you wish to configure for Situation Manager.



2. Ensure Advanced View is enabled for the reader properties.




3. Scroll down the reader properties until you find the **Situation Manager** settings.

Advanced Situation Manager

Use Composite View	No
Camera Preset	0
Situation Manager	
Ignore Global Unlock	No
Ignore Global Lock	No
Emergency Lockdown	None
Snow Day	None
Low Threat	None
Medium Threat	None
High Threat	None
Header Location	
Panel Address	d7d3283d-e034-4832-907d-bca24beca
Physical Reader Port	0

4. Use the drop-down selections to define what the reader mode will be when each of the situation manager levels is active. If you leave the threat level at None it will follow the default reader mode (typically card only). You might want to configure the door to be unlocked when there is low threat, Card + PIN when there is high threat and set to Lockdown when there is an Emergency Lockdown situation.

Situation Manager	
Ignore Global Unlock	No
Ignore Global Lock	No
Low Threat	Unlocked
Medium Threat	None
High Threat	Card and PIN
High Threat (Options)	<input checked="" type="checkbox"/> None <input type="checkbox"/> TwoCardEnabled <input type="checkbox"/> BioVerifyEnabled <input type="checkbox"/> All
Snow Day	None
Emergency Lockdown	Lockdown

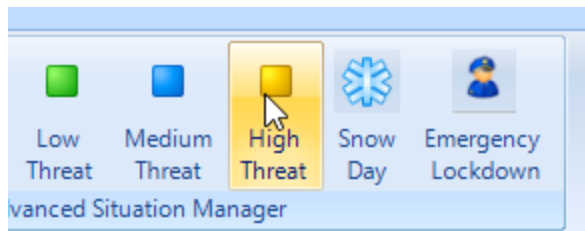
5. Save the reader settings once you have made your selections. 

Advanced Situation Manager

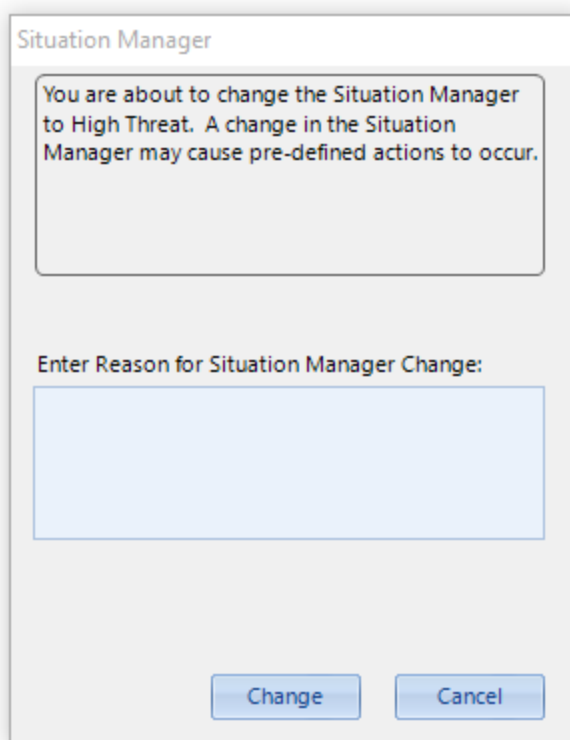
Activating Situation Manager

Usually Situation Manager is activated via the icons that are added to the Home ribbon bar.

- From the Home tab simply click on the icon that corresponds to the threat level you wish to activate.



- A notification window will appear.

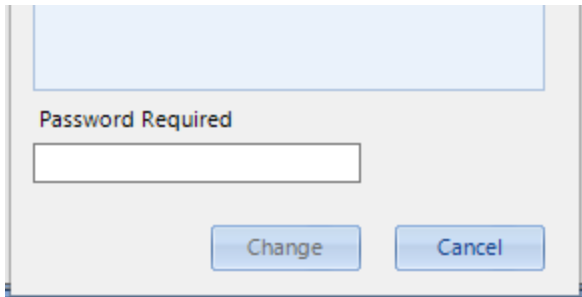


- If Situation Manager has been configured to Require Notes you will need to enter the notes in the field that is labelled: Enter Reason for Situation Manager Change.

- If Situation Manager is set to require a password then you will need to enter the

Advanced Situation Manager

correct password.

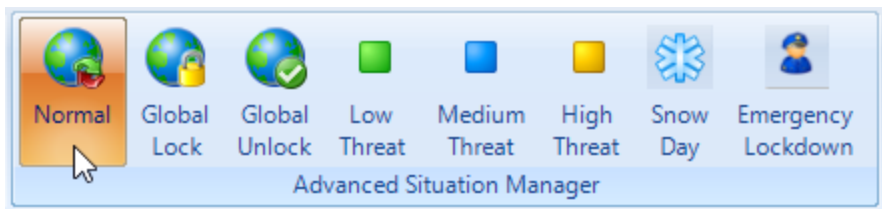


- Click the Change button when you are ready to proceed.
- The reader will immediately go into the correct reader mode for the threat level that you selected.

De-activating Situation Manager Threat Levels

From the Ribbon Bar

- You can either select a lower threat level or you can use the Normal button (next to the Global Unlock and Global Lock buttons)

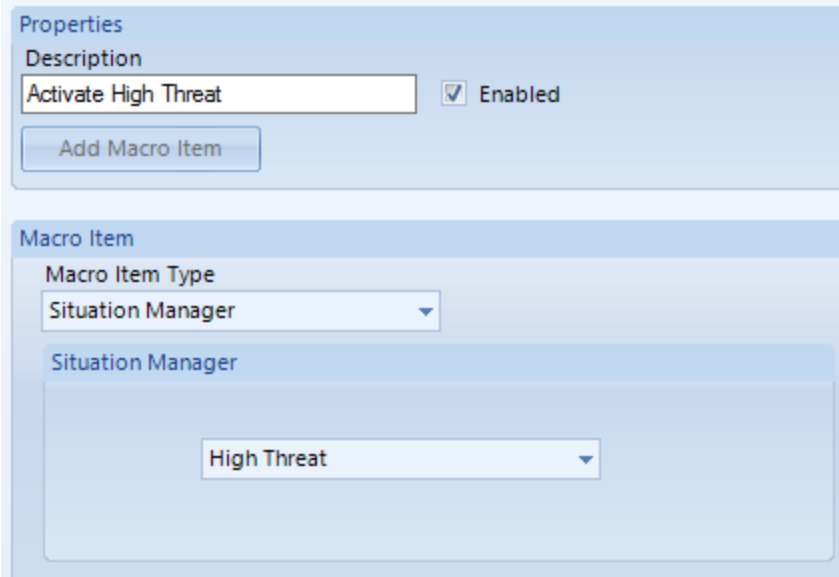


- If you do not have the Global buttons showing on the ribbon bar refer to the Door-sNET help section **Global Unlock - Software** for further information on how to set this up.

Using Global Linkage

If you have Global Linkage enabled on your system you can easily set up a Global Linkage Macro that will activate a threat level.

Advanced Situation Manager



The screenshot shows a software configuration window with two main sections. The top section, titled 'Properties', contains a 'Description' field with the text 'Activate High Threat' and a checked 'Enabled' checkbox. Below this is an 'Add Macro Item' button. The bottom section, titled 'Macro Item', contains a 'Macro Item Type' dropdown menu set to 'Situation Manager'. Below this is a 'Situation Manager' sub-section with a dropdown menu set to 'High Threat'.

You then create a trigger that will action the macro.

A Global Linkage trigger could be:

1. A designated input going active or inactive.
2. A valid card read from a specific cardholder at a specific reader.
3. Door forced or door held event.
4. Double card presentation (only supported with SCP or MSC controllers)

Note: Global Linkage commands generate from the PC and as a result, controllers will not receive any commands if they are offline.

Situation Manager Overrides

When you configure your Situation Manager Levels there is an 'Ignore Override' setting which by default is set to No. That means you will be able to override the Situation Manager such as via a remote command from the software (right-clicking the reader and changing the reader mode).

If you set this option to Yes you will then not be able to override Situation Manager.



Advanced Situation Manager

Contact Keri Systems

Keri USA	Keri UK, Ireland, Europe
2305 Bering Drive San Jose, CA 95131	Unit 17 Park Farm Industrial Estate, Ermine Street Buntingford Herts SG9 9AZ UK
Telephone: (800) 260-5265 (408) 435-8400	Telephone: + 44 (0) 1763 273 243
Fax: (408) 577-1792	Fax:+ 44 (0) 1763 274 106
Web: www.kerisys.com	Web: www.kerisystems.co.uk
E-mail: sales@kerisys.com techsupport@kerisys.com	E-mail: sales@kerisystems.co.uk tech-support@kerisystems.co.uk

Keri Systems YouTube Channel - [Keri YouTube Channel](#)

Keri Systems Knowledge Base Website - [Keri Knowledge Base](#)

End of document.