

Doors.NET Database Detach and Attach

This document explains how to detach a database (so that it can be copied to a backup location and used in migrating a system to a different host PC/Server). A typical example would be if you are migrating your system to an upgraded host or if you are upgrading the Windows operating system.

This document guides you through the process of detaching and attaching a Doors.NET SQL database using an SQL Express database engine. Keri recommends consulting an IT administrator when administering databases installed in a full version of SQL Server. This particular guide uses Windows 10 operating system and SQL Server 2012.

IMPORTANT NOTES

1. Two or more Doors.NET or DoorsNXT databases using the same controller MAC addresses and TCP/IP addresses on the same network subnet will result in numerous hardware communication issues.
2. Microsoft does not provide a downgrade path for SQL databases. This means you cannot use 2008 or SQL 2012 files on a SQL 2005 database engine. You can, however use SQL 2005 files on any other newer version of SQL Server.
3. You **MUST** ensure you have made a backup of your database before you attempt to detach it. The quickest and easiest way to do this is via **Tools >> Backup**. The Live Events grid will generate an event once the backup is complete.

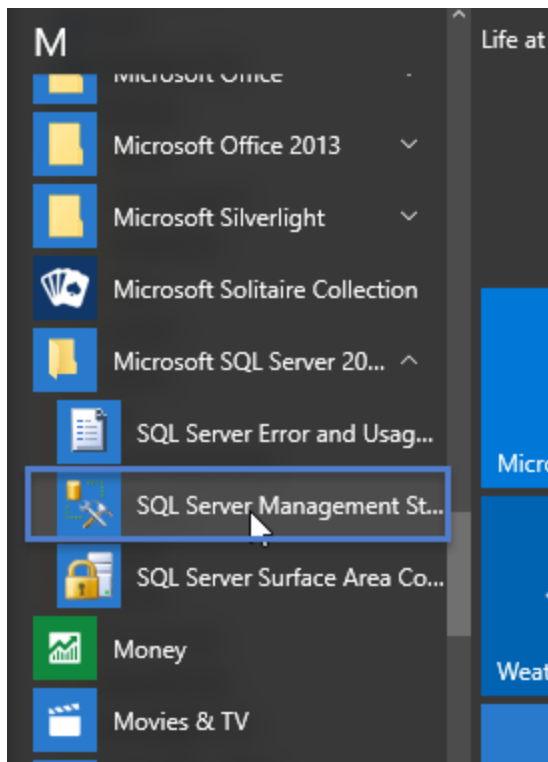


The following procedure would typically be used to move the entire Doors.NET system onto a different host workstation, or if the Windows operating system is being upgraded. It uses SQL Express 2012 but the steps are almost identical as other SQL Express versions.

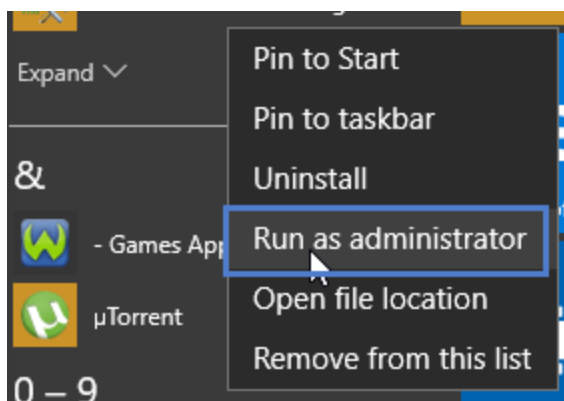
Doors.NET Database Detach and Attach

Detaching a Doors.NET SQL Database

1. From the Windows Start menu >> All Programs/Apps >> Microsoft SQL Server 2012 >> SQL Server Management Studio Express.

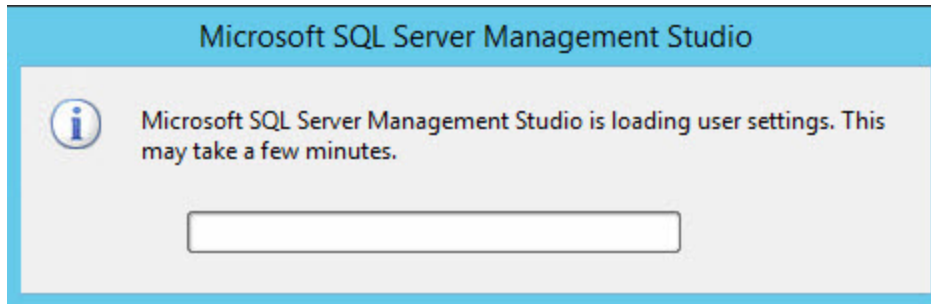


2. Right-click the start menu item and select 'Run as administrator'.

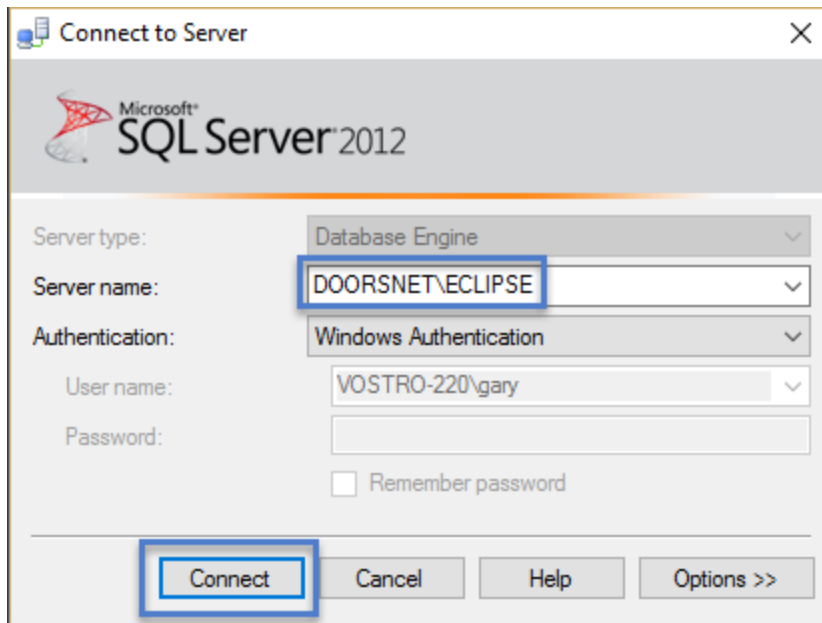


3. Please allow extra time for the program to configure itself and load if you are running it for the first time.

Doors.NET Database Detach and Attach

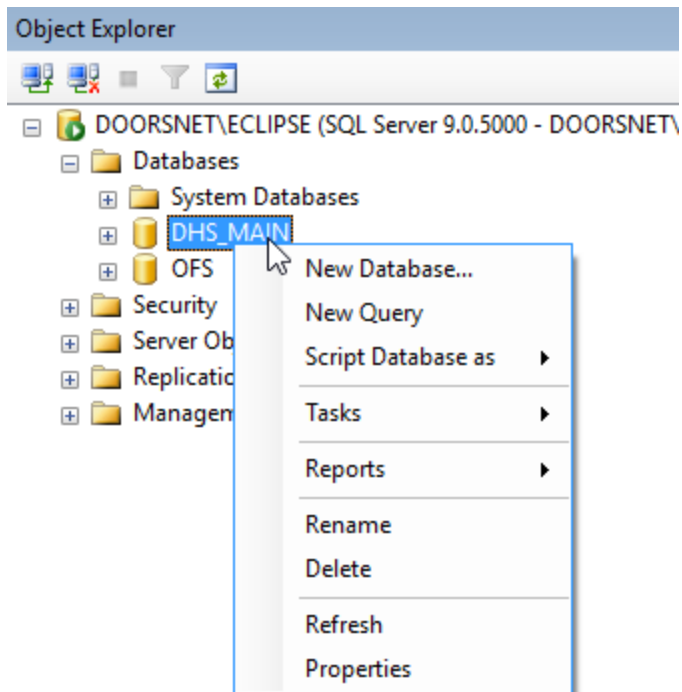


4. A connection window will appear displaying the host name and the database instance (default for Doors.NET is ECLIPSE).
5. Leave Authenticate at the default selection of **Windows Authentication** (you must ensure you have full Administrative Rights to the PC). If Windows Authentication is disabled you will need to consult an IT administrator.
6. Click on the **Connect** button.

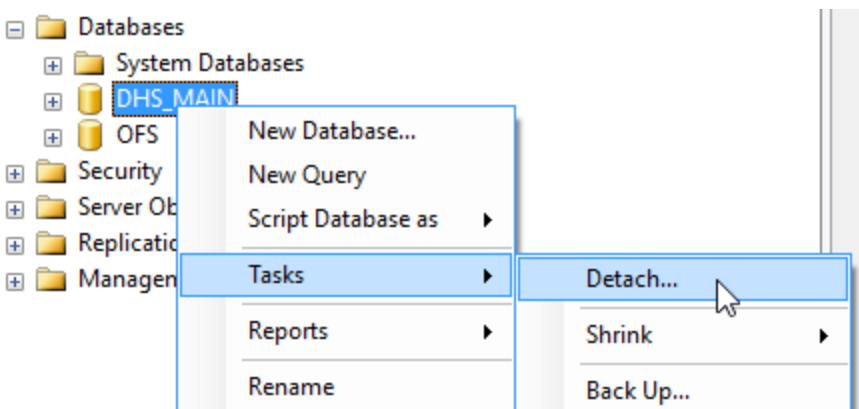


Doors.NET Database Detach and Attach

7. Expand Databases, listed in the left-hand pane and right-click on DHS_MAIN.

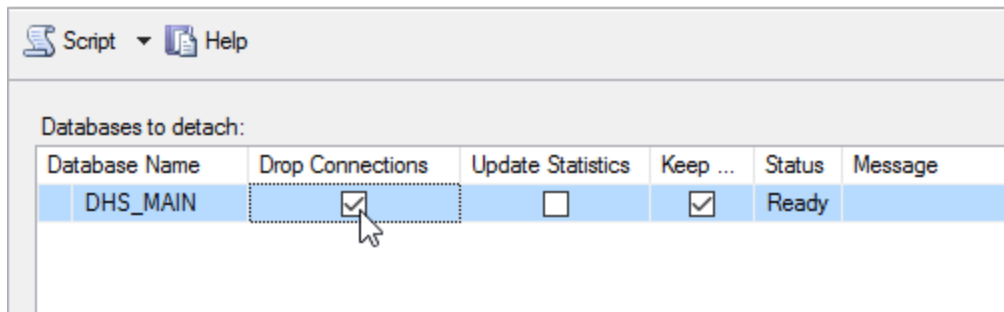


8. From the menu options go to Tasks >> Detach.



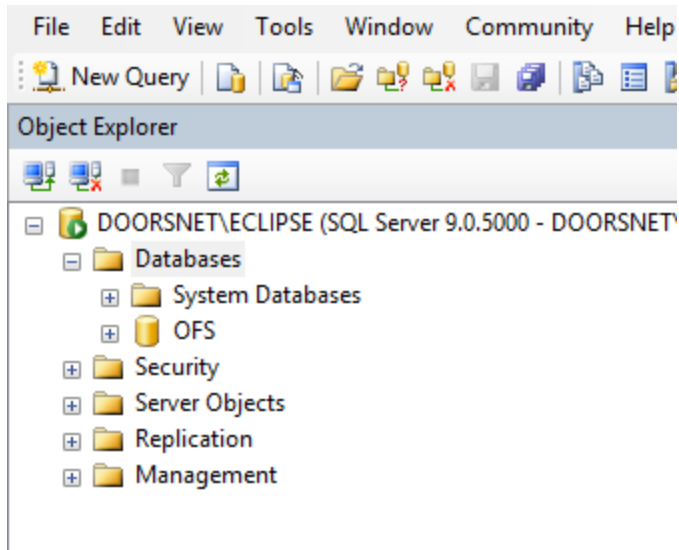
Doors.NET Database Detach and Attach

9. From the Detach Database window check the Drop Connections option.



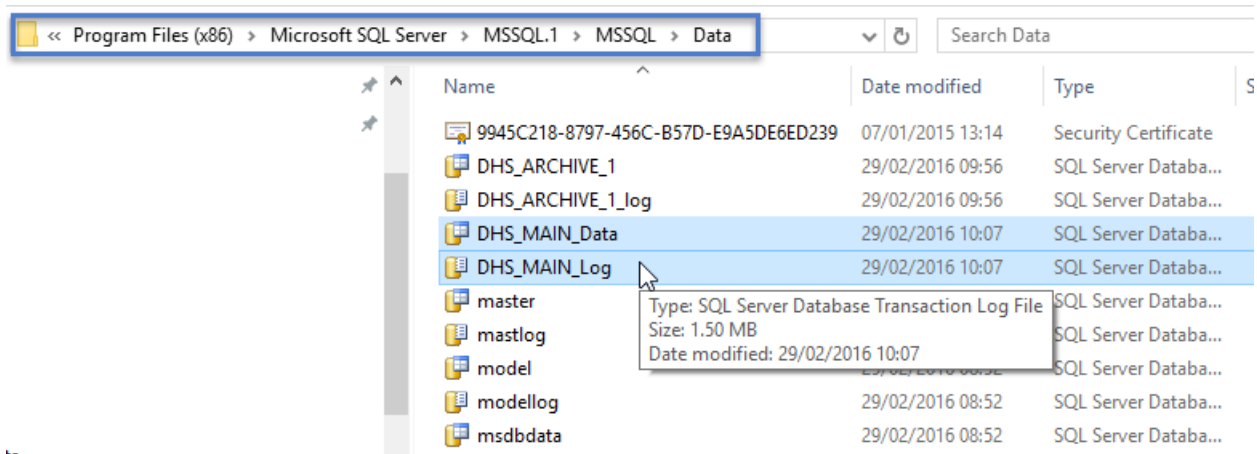
10. Click the OK button to detach the database.

11. The database will no longer be listed as a Database within Studio Manager.



12. Two SQL database files will now be available (**DHS_MAIN.mdf** and **DHS_MAIN_log.mdf**) that can be copied and moved to another PC that has been prepared with a fresh install of Doors.Net and SQL Server/Server Express. These files must be copied to same directory shown in the image below.

Doors.NET Database Detach and Attach

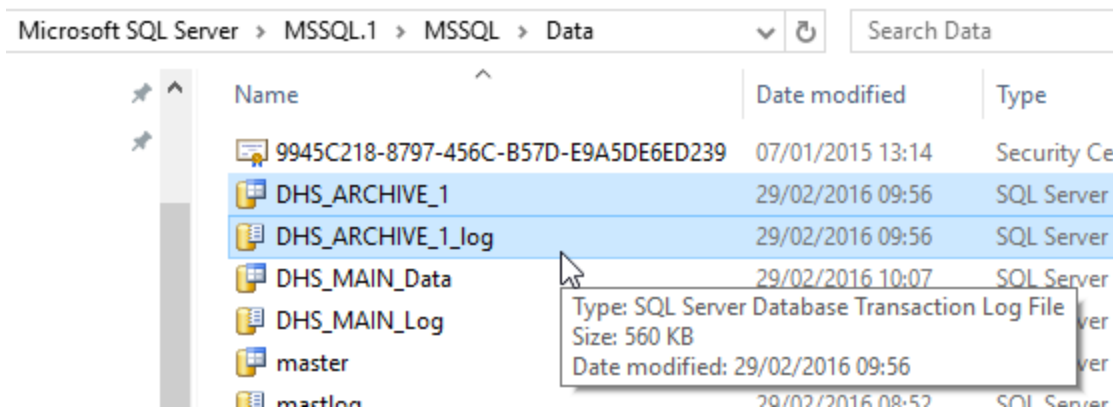


Note: For a 32-bit operating system the default database file path will be:

Program Files >> Microsoft SQL Server >> MSSQL.1 >> MSSQL >> Data

Note: The detach procedure is used if you have performed a fresh install of Doors.NET using the default selections. You would detach the database that gets installed automatically and then attach the backup database files (or converted database files for upgrades from Doors32).

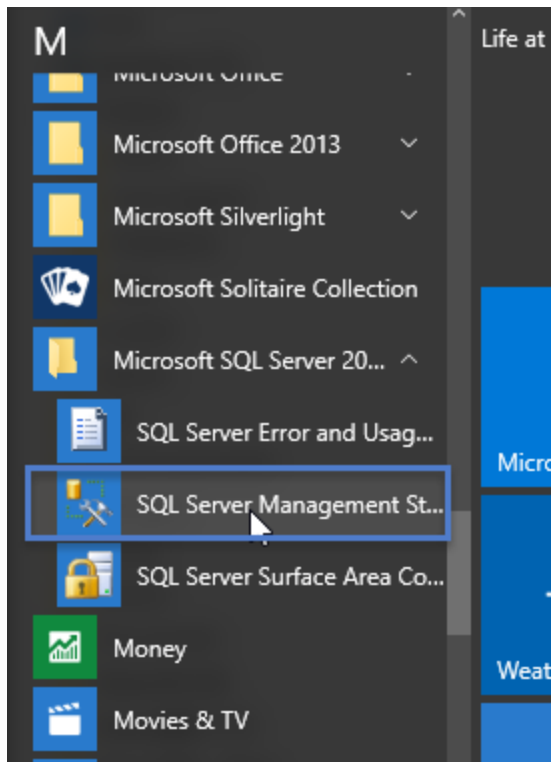
13. Keeping a copy of these two database files will also provide you with a full database backup. But note: if the system has been periodically archiving event information you will also need to keep copies of your archive database files.



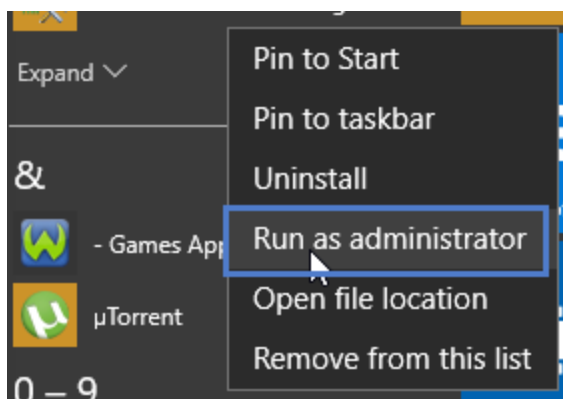
Doors.NET Database Detach and Attach

Attaching a Doors.NET SQL Database

1. From the Windows Start Menu go to All Programs >> Microsoft SQL Server 2012 >> SQL Server Management Studio Express.



2. Right-click the Start menu item and select Run as administrator.

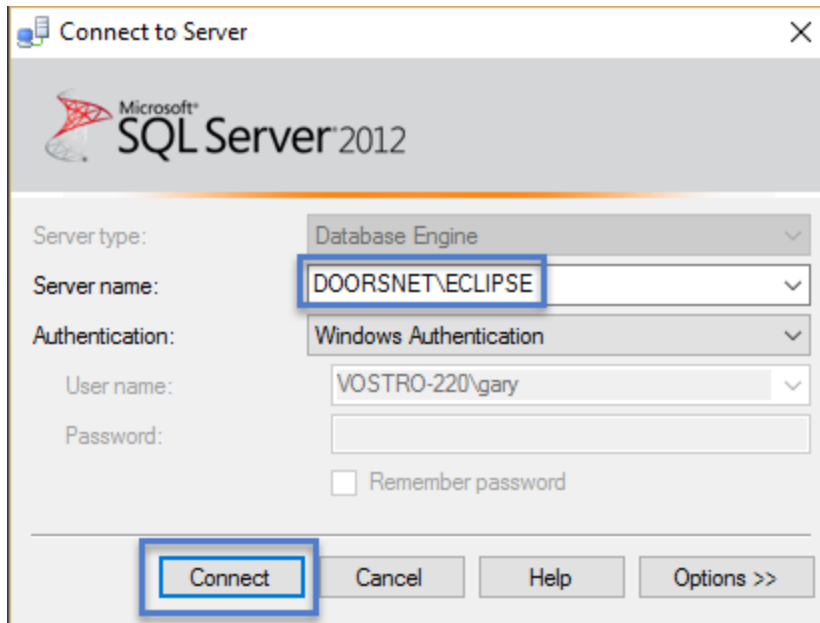


3. A connection window will appear and will be displaying the host PC name, the DoorsNET database instance of ECLIPSE and the Authentication Mode should be

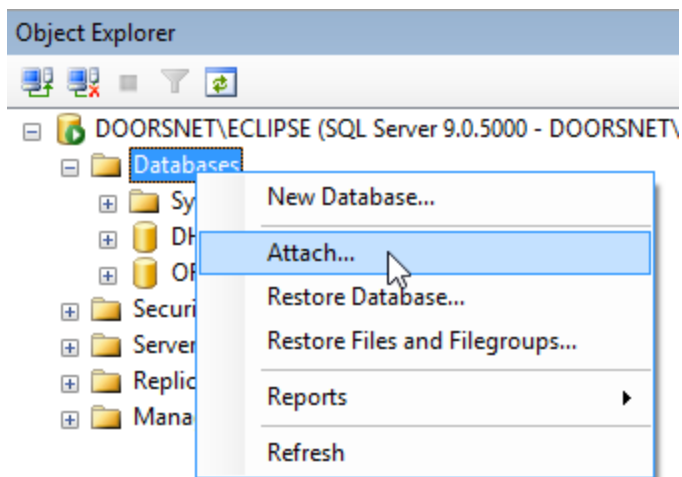
Doors.NET Database Detach and Attach

set to **Windows Authentication**.

4. Leave all settings at their default values and click the **Connect** button.

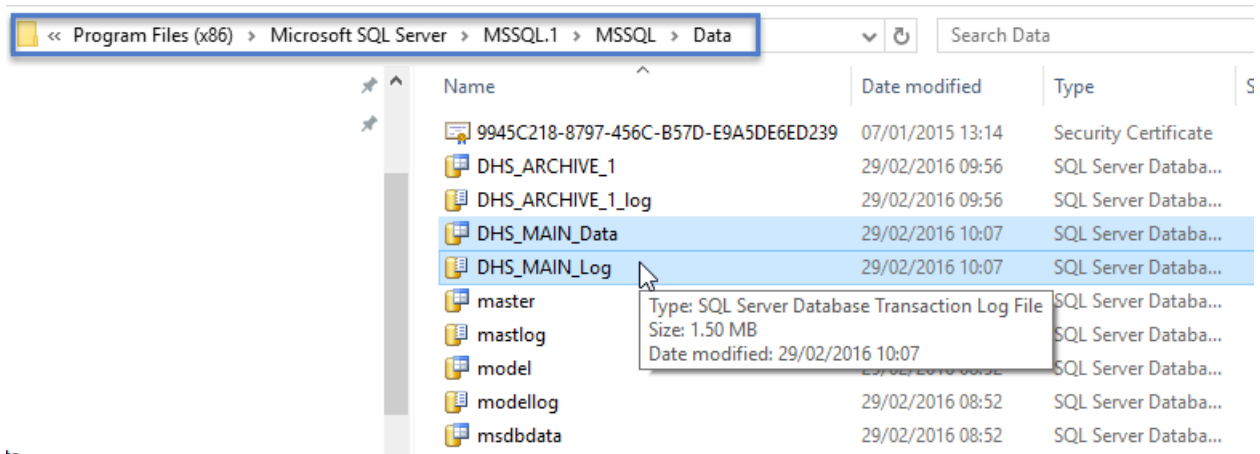


5. Right-click on Databases, listed in the left-hand pane, and choose **Attach**.

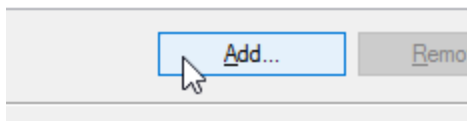


Note: At this point you should have already copied your back-up database files into the default SQL file directory, as highlighted below:

Doors.NET Database Detach and Attach

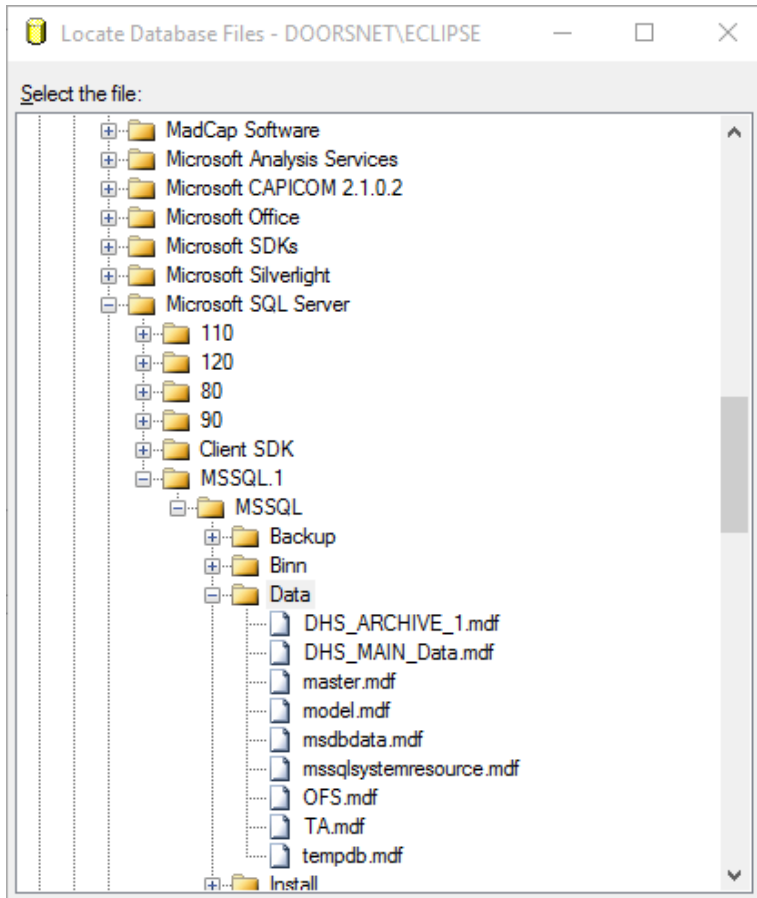


6. Click the Add button.



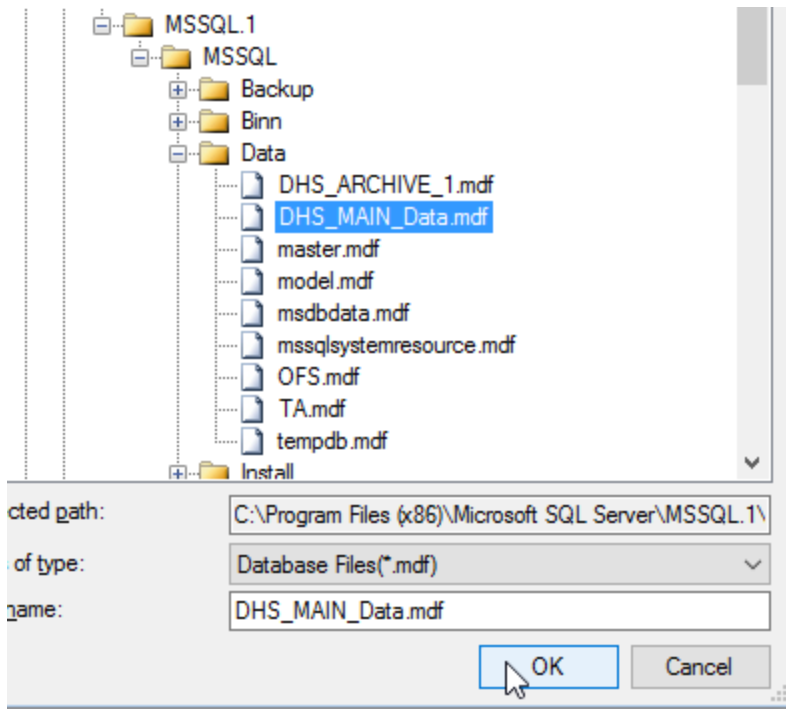
Doors.NET Database Detach and Attach

7. The browse window will open automatically to the default SQL data folder.



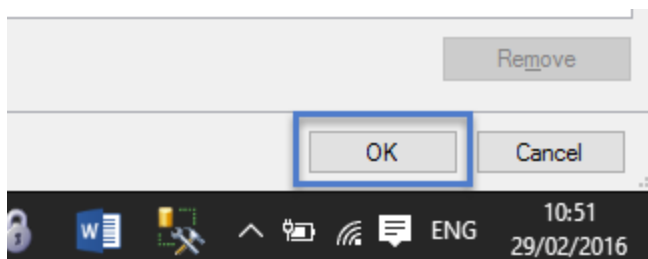
Doors.NET Database Detach and Attach

8. Select your Doors.NET database.mdf file.



9. Then click the OK button and allow it to run.

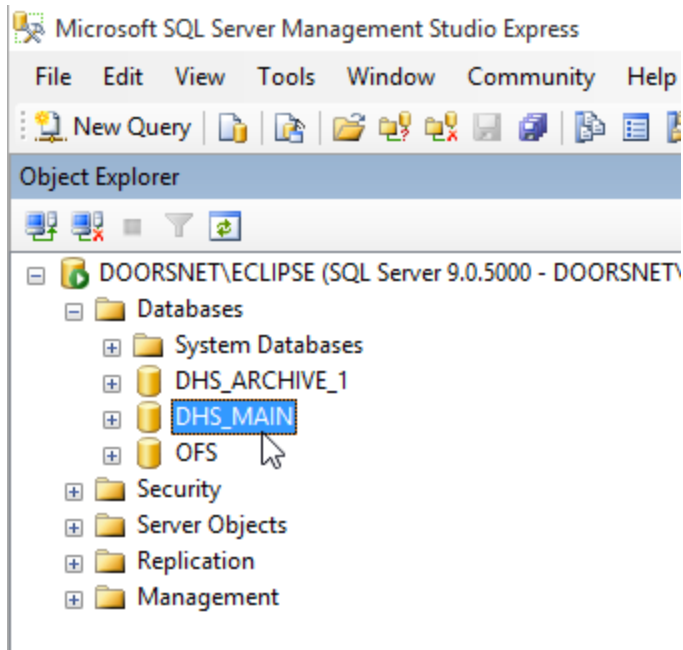
10. Click the OK button in the lower right corner.



11. In the lower left corner of the Attach database window, you can observe the green progress bar so you know when the database is successfully attached.

12. Once complete the Doors.NET database will be listed under Databases in the left pane of Studio Manager.

Doors.NET Database Detach and Attach



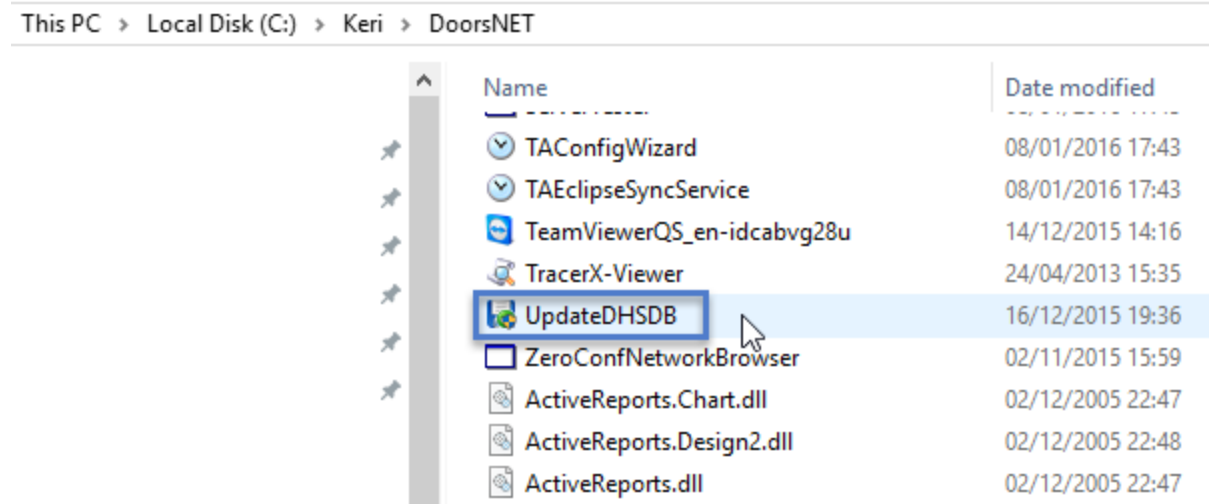
Update the Database using UpdateDHSDB

1. Locate the the UpdateDHSDB executable file (the default location is:

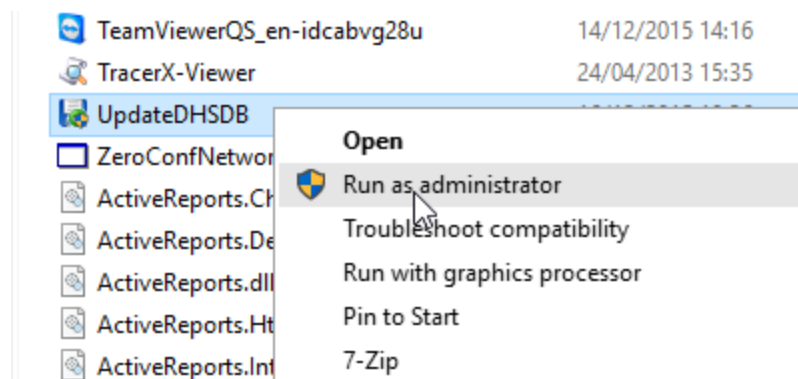
C:\Keri\DoorsNET).

NOTE: If the application server PC and the database PC are different, you should copy this file to a thumb drive and then copy it somewhere onto the database PC (it doesn't matter where). This program must be run on the workstation that the database resides.

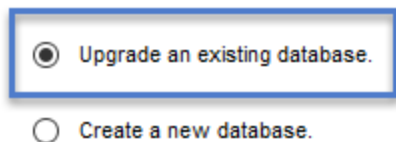
Doors.NET Database Detach and Attach



2. Right-click and select **Run as administrator**.



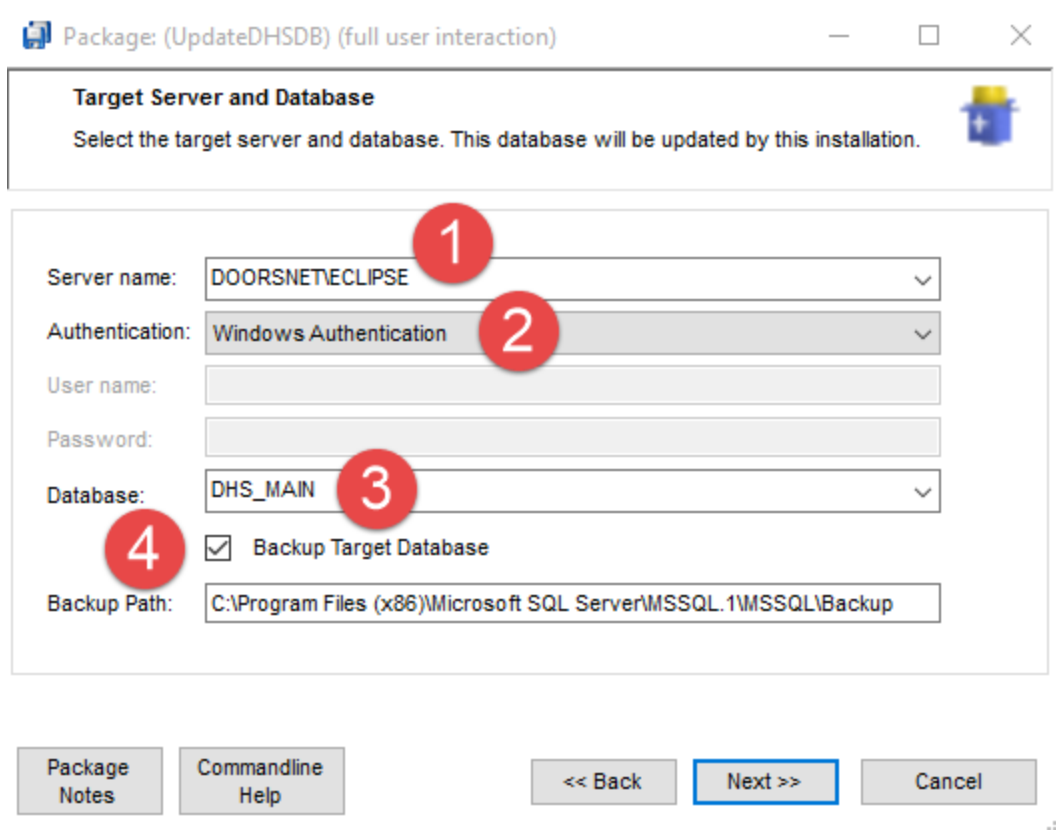
3. When the update database window appears you will see that **Upgrade an existing database** is selected by default, so click the Next button.



The default settings and values are as follows:

Doors.NET Database Detach and Attach

- The server/PC name should be displayed along with the SQL instance of ECLIPSE. **(1)**
- The Authentication mode should be set to Windows Authentication. **(2)**
- The database you should select from the database list is DHS_MAIN. **(3)**.
- Un-check Backup Target Database (unless you do specifically wish to create a backup of the database). **(4)**.



Package: (UpdateDHSDB) (full user interaction)

Target Server and Database
Select the target server and database. This database will be updated by this installation.

Server name: DOORSNETECLIPSE **1**

Authentication: Windows Authentication **2**

User name:

Password:

Database: DHS_MAIN **3**

Backup Target Database **4**

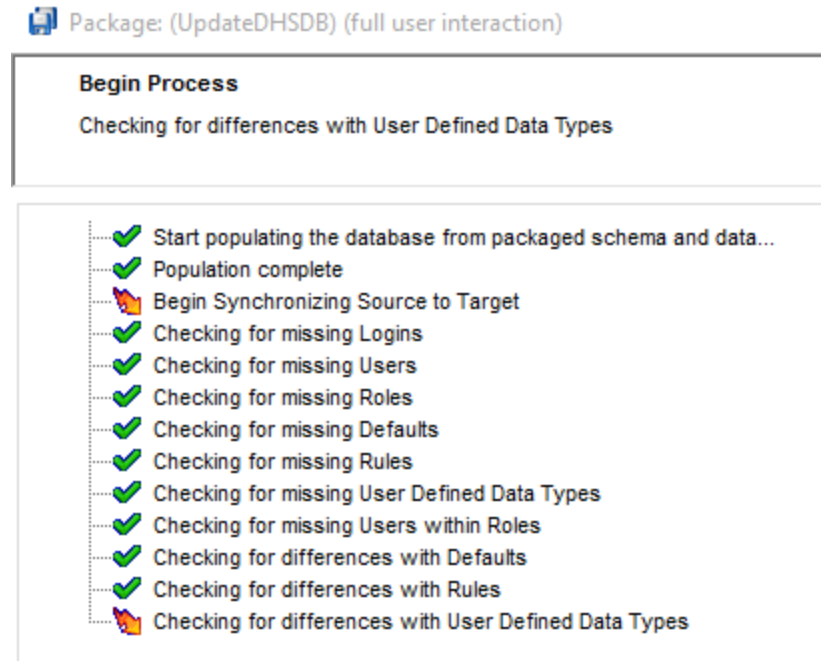
Backup Path: C:\Program Files (x86)\Microsoft SQL Server\MSSQL.1\MSSQL\Backup

Package Notes | Commandline Help | << Back | Next >> | Cancel

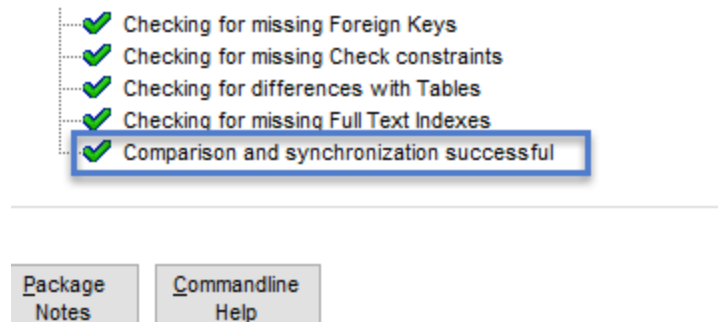
4. Click the Next button.
5. On the Begin Process screen click the Finish button.

Doors.NET Database Detach and Attach

6. Allow the upgrade process to run.



7. In a few moments you should see that the upgrade has completed.



8. Click the Exit button to complete the upgrade procedure.

The final step is to run the **Gateway Wizard** to associate the gateway windows service with the attached database. Running the gateway Wizard is covered in a separate document (P/N: 01565-002).



Doors.NET Database Detach and Attach

Contact Keri Systems

Keri USA	Keri UK, Ireland, Europe
2305 Bering Drive San Jose, CA 95131	Unit 17 Park Farm Industrial Estate, Ermine Street Buntingford Herts SG9 9AZ UK
Telephone: (800) 260-5265 (408) 435-8400	Telephone: + 44 (0) 1763 273 243
Fax: (408) 577-1792	Fax: + 44 (0) 1763 274 106
Web: www.kerisys.com	Web: www.kerisystems.co.uk
E-mail: sales@kerisys.com techsupport@kerisys.com	E-mail: sales@kerisystems.co.uk tech-support@kerisystems.co.uk

Keri Systems YouTube Channel - [Keri YouTube Channel](#)

Keri Systems Knowledge Base Website - [Keri Knowledge Base](#)

End of document.