

Doors.NET™ Software Installation

Application Note

Doors.NET installation and controller configuration is a three step process. Each of these steps has its own document, with controller configuration broken into separate documents per hardware type.

- software installation – DoorsNET_Software_Installation.pdf (p/n 01565-001 – this document)
- license manager and gateway configuration – License_Manager_and_Gateway_Configuration.pdf (p/n: 01565-002)
- controller configuration
 - Basic_PXL_Configuration_In_DoorsNET.pdf (p/n: 01238-001)
 - Basic_NXT_Configuration_In_DoorsNET.pdf (p/n: 01238-002)
 - Basic_Mercury-Powered_NXT_Configuration_In_DoorsNET.pdf (p/n: 01238-003)

This document describes the standard software installation process for Doors.NET software.

NOTE: PXL-based sites with the following types of controllers are NOT supported in Doors.NET at this time:

- PXL-510 controllers for alarm panel control
- PXL-500G controllers for gate control
- PXL-250 controllers (this product line is obsolete)

1.0 Recommended PC Configuration

This section provides recommended PC hardware requirements to ensure acceptable software system operation in typical access control applications using Doors.NET software. Access control applications with large numbers of controllers and/or cardholders should consider upgrading from the minimum recommendation. Operating System compatibility is listed in the next section.

NOTE: PC capability, cost, and accessibility is constantly changing. This document provides Keri's recommendations, but is subject to change as PC hardware changes.

1.1 Standard Hardware Requirements

- Ethernet Adapter
- DVD Drive for software installation
- Internet connection for license activation
- Keyboard, Mouse, Display
- USB Port(s)

1.2 Server PC or Combined Server/Client PC Requirements

- Microprocessor - Intel Core2 Duo, 2.4 GHz or greater, 8 MB cache or greater
- Memory - 3 GB for 32-bit operating systems, 4 GB or greater for 64-bit operating systems
- Hard Drive - 500 GB or greater
- Video - either on-board or plug-in card that supports a minimum resolution of 1280x1024 or greater
 - a full EVR client (a licensed option) requires a video card with 64 MB or greater of RAM

1.3 Client Only PC Requirements

- Microprocessor - Intel Pentium, Dual-Core, 2.4 GHz or greater, 2 MB cache or greater
- Memory - 2 GB or greater
- Hard Drive - 160 GB or greater
- Video - either on-board or plug-in card that supports a minimum resolution of 1280x1024 or greater
 - a full EVR client (a licensed option) requires a video card with 64 MB or greater of RAM

Doors.NET™ Software Installation

Application Note

2.0 Operating System Compatibility Table.

Table 1: Doors.NET / Operating System Compatibility

Windows XP (w/SP-3)	32-bit	64-bit
Home	NO	NO
Business	Yes	Yes
Pro	Yes	Yes
Vista (w/SP-1)	32-bit	64-bit
Home Basic/Premium	NO	NO
Business	Yes	Yes
Enterprise	Yes	Yes
Ultimate	Yes	Yes
Windows 7	32-bit	64-bit
Home Premium	NO	NO
Professional	Yes	Yes
Ultimate	Yes	Yes
Windows 8.1	32-bit	64-bit
Standard	Yes	Yes
Professional	Yes	Yes
Enterprise	Yes	Yes
Windows 10	32-bit	64-bit
Home	Yes	Yes
Professional	Yes	Yes
Enterprise	Yes	Yes
Windows Server	32-bit	64-bit
2003	Yes	Yes
2008	Yes	Yes
2008 R2	Yes	Yes
2012	n/a	Yes

Operating Systems not listed in this table are **NOT** supported by Doors.NET software.

Doors.NET™ Software Installation

Application Note

2.1 Critical Notes Regarding Operating Systems:

1. Doors.NET is ending its support for older, obsolete Microsoft Operating Systems and SQL Server programs.

For a computer with the Windows XP operating system:

- For the Doors.NET v3.5.1.21 release, Doors.NET will perform a software upgrade from an older software release to this new release, but will not perform a new software installation.
- For the future Doors.NET v3.5.1.22 release, Doors.NET will not perform a new software installation.

For a computer with the Server 2003 operating system:

- For the future Doors.NET v3.5.1.22 release, Doors.NET will perform a software upgrade from an older software release to this new release, but will not perform a new software installation.
- For the future Doors.NET v3.5.1.23 release, Doors.NET will not perform a new software installation.

For a computer using SQL 2005

- With the future Doors.NET v3.5.1.23 release, SQL 2005 support also ends. The Doors.NET installation program will manage any SQL upgrades from SQL 2005 to a newer SQL release.

2. To ensure proper Doors.NET operation the PC's operating system and .NET platform must be up to date with ALL Microsoft service packs and security updates. Windows Update may need to be run multiple times to ensure all updates are applied before installing Doors.NET. PCs that are not up to date prior to beginning the installation process will require additional software installation time.
3. It is strongly advised, if you are installing Doors.NET on a Windows Server operating system (2003, 2008, 2008 R2, or 2012), that you have an IT person that is a Microsoft Certified Professional present during the install of Doors.NET. Windows Server operating systems have unique requirements that certified IT professionals are trained to handle.

Doors.NET™ Software Installation

Application Note

3.0 Installation via DVD

Installation via DVD is the quickest way to perform an installation as all possible installation files are on the DVD. Insert the Doors.NET Software Installation DVD and the AutoRun program begins.



*NOTE: Navigate to the DVD's root directory and run the **autorun.exe** program if this menu does not appear.*

- Click the [Keri Logo](#) to open your web browser and visit the kerisys.com web site.
- Click [View Release Notes](#) to view a Readme.txt file with information on this software release.
- Click [Install Software](#) to install Doors.NET.
- Click [Installation Document Set](#) to open an Explorer window with a set of documents covering basic installation.
- Click [Technical Documentation](#) to open an Explorer window with technical documentation.
- Click [Marketing Documentation](#) to open an Explorer window with marketing documentation.
- Click [View Training Video](#) to open an Explorer window of Windows media video files.
- Click [Exit AutoRun](#) to close the AutoRun window.

4.0 Installation via WebInstaller

If you do not have a Doors.NET DVD the WebInstaller links directly to an online version of the installation program. This is a slower process as files are downloaded from the Keri web server on an as-needed basis. Supporting documentation is available for download from the Keri web site.

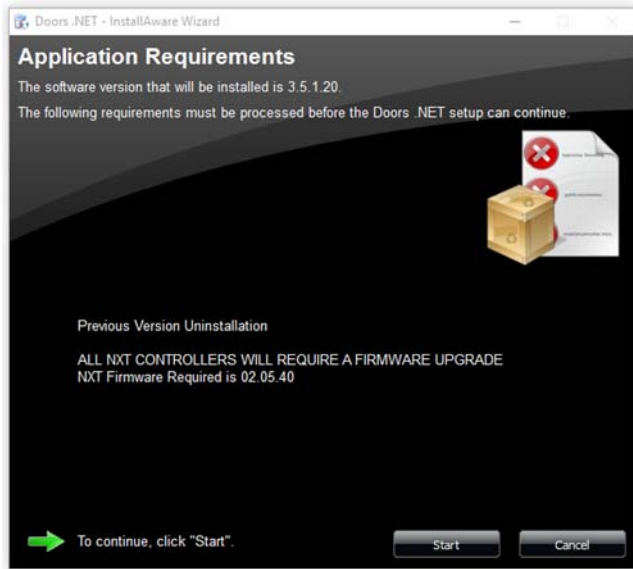
Contact your Inside Sales Representative to be given access to the download link. Download and run the WebInstaller program to start the Software Installation. Any supporting files required to complete the installation are downloaded from the Keri web site as needed. Hence, installation via WebInstaller is a much more time consuming process than installation via DVD as this process is based on your Internet connection speed and reliability. A high-speed Internet connection is recommended when using the WebInstaller.

Doors.NET™ Software Installation

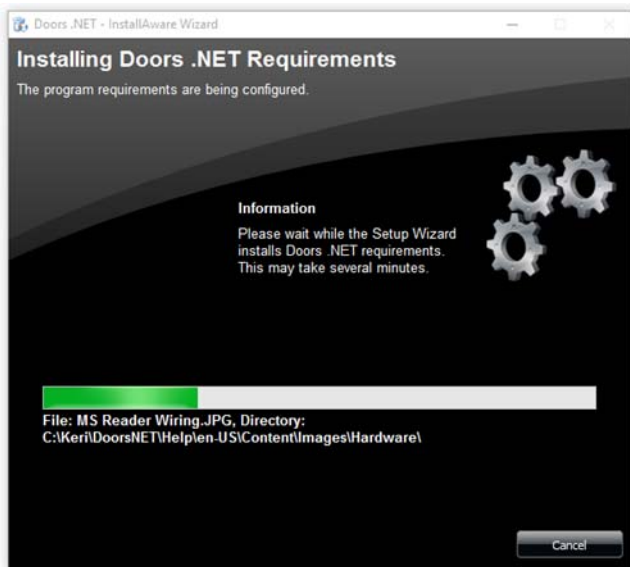
Application Note

5.0 Software Installation

1. If you are upgrading an existing installation the installer program first reviews the firmware revisions for the hardware in the program database and notifies you of any required firmware updates. Click **START** to begin the software installation. **A new installation skips this step.**



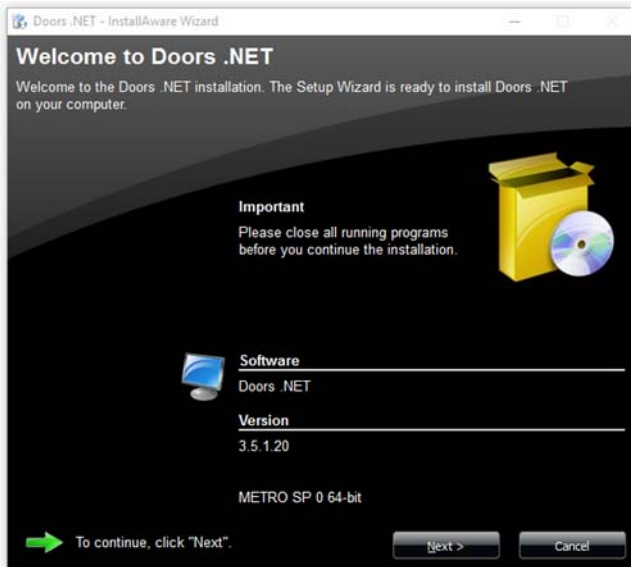
2. Once started, the installer performs a quick installation file verification and prepares the file set for installation.



Doors.NET™ Software Installation

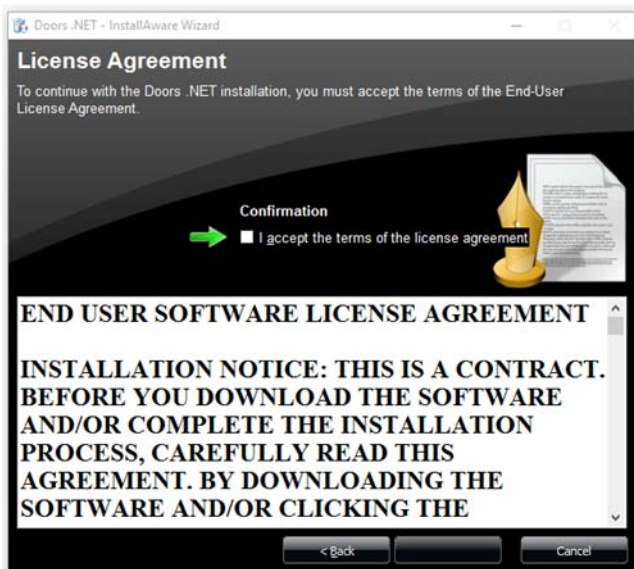
Application Note

3. The Welcome Window appears when it is ready to begin the installation.



4. Review the version listing to confirm the revision of the software to be installed.
5. Click NEXT to continue to the License Agreement.

NOTE: You must accept the terms of the License Agreement to install this software. Keri recommends reading through the License Agreement in its entirety before accepting the terms.

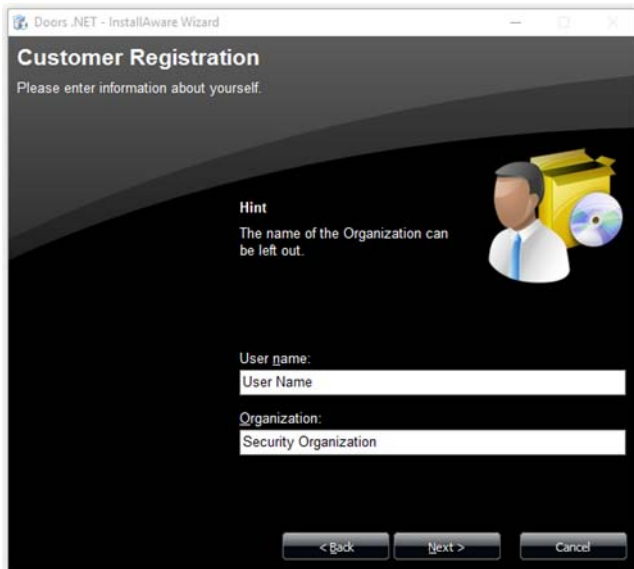


6. Click the check-box to accept the License Agreement.

Doors.NET™ Software Installation

Application Note

7. Click NEXT to enter Customer Registration information.



8. Enter your User Name and (optionally) an Organization Name.

9. Click NEXT to select your Type of Installation.



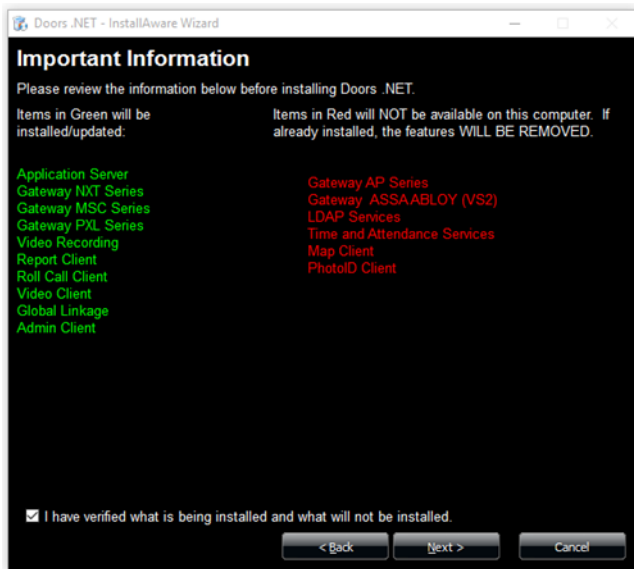
10. Click the Radio Button corresponding to your Type of Installation.

- A Full Installation installs all software components for a standard installation onto the PC.
- A Basic Installation installs only the user client onto the computer.
- A Basic Installation with Hardware Driver installs the user client and the relevant hardware gateway onto the computer.
Use this option if your user client is on a different subnet than the PC with the full installation.
- A Custom Install allows you to select additional applications to be installed.
This can include optional licensed applications beyond those included in the standard installation package.

Doors.NET™ Software Installation

Application Note

11. Click NEXT to verify the installation parameters.



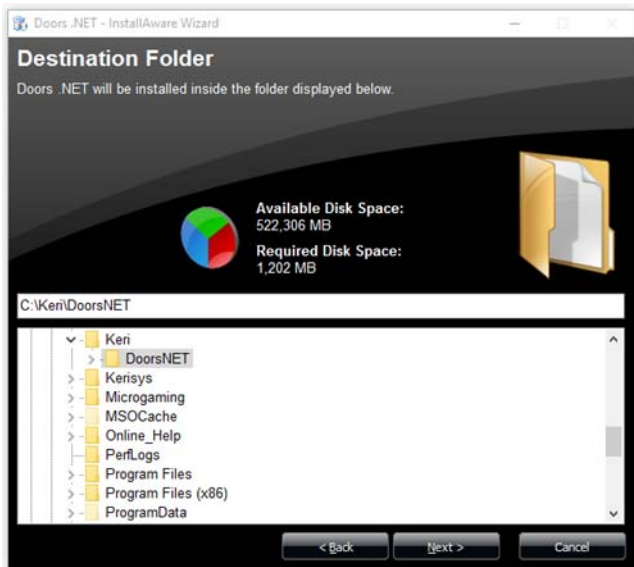
12. Review this list carefully as it explicitly states what will and will not be installed on your PC.

- A list of items **to be installed** is displayed in GREEN.
- A list of items that **will not be installed** is displayed in RED.

If this list is not correct, click BACK and review the Type of Installation options.

13. Click the check box to confirm the installation parameters are correct.

14. Click NEXT to select the Destination Folder. This is the folder into which the Doors.NET software is installed.

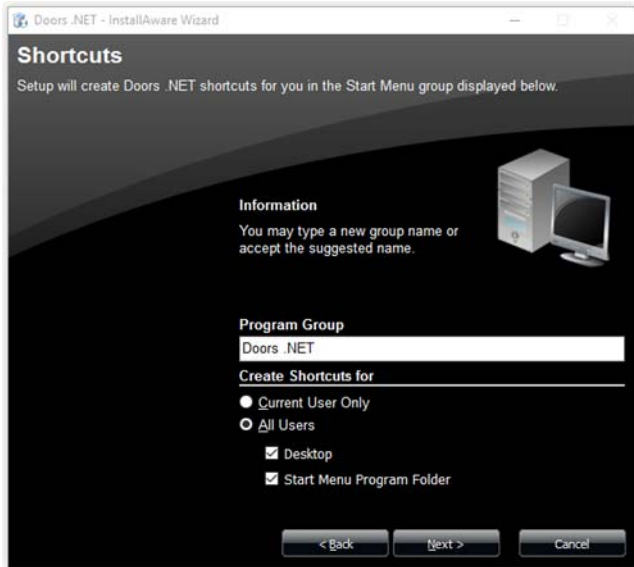


15. The default destination folder is listed in the destination folder field. Keri recommends using this folder for the software installation. If a different destination folder is desired than the default, you may use the Explorer window to locate the desired folder. Once located, double-click on the folder name to enter the folder name into the destination field.

Doors.NET™ Software Installation

Application Note

16. Click NEXT to select the types of program shortcuts to be installed on the computer.



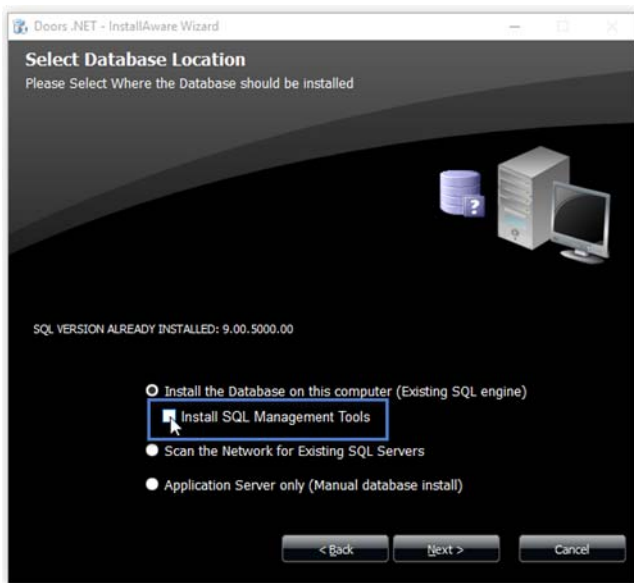
17. Use the radio buttons to select if software access is to be granted to:

- Current User Only (the user logged into the PC)
- All Users of the Computer (any user logged into the PC)

18. Use the check boxes to select any combination of:

- Desktop icon
- Start Menu folder
- Quick Launch Toolbar

19. Click NEXT to install the Doors.NET database.



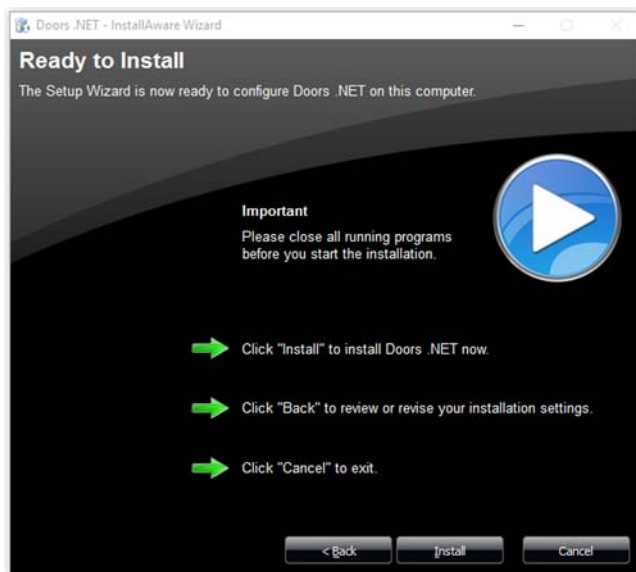
Doors.NET™ Software Installation

Application Note

20. The installer lists if it detects an SQL Server is available on the host PC. There are three options based on what the installer finds:
- Install the Database on this computer - this is the default option. If the Installer detects an existing SQL application, its revision is listed. If there isn't an SQL Server available on the PC, then Microsoft's SQL Server Express® (a free SQL server package) will be installed and then the database will be installed.
 - Scan the Network for Existing SQL Servers - allows the installer to search all accessible network folders for an SQL application and installs the database on that network folder. Using this option requires that the network folder always be available for the PC/Doors.NET program.
 - Install the Application Server only - requires a Manual database installation. This option is recommended only for installers who are very familiar with SQL.

NOTE: SQL management tools are automatically installed with Windows operating systems prior to Windows 8. With Windows 8 or Windows 10 they must be installed separately. If you are installing on Windows 8/10 an additional tick-box appears, "Install SQL Management Tools" (highlighted in red in the above graphic - you will not see this tick-box in non Windows 8/10 operating systems). Keri recommends checking this tick-box and installing the SQL Management Tools. This allows you to detach, relocate, and attach Doors.NET databases. See "Installing SQL Management Tools" on page 12. for instructions on installation.

21. Click NEXT to confirm you are ready to install the software.

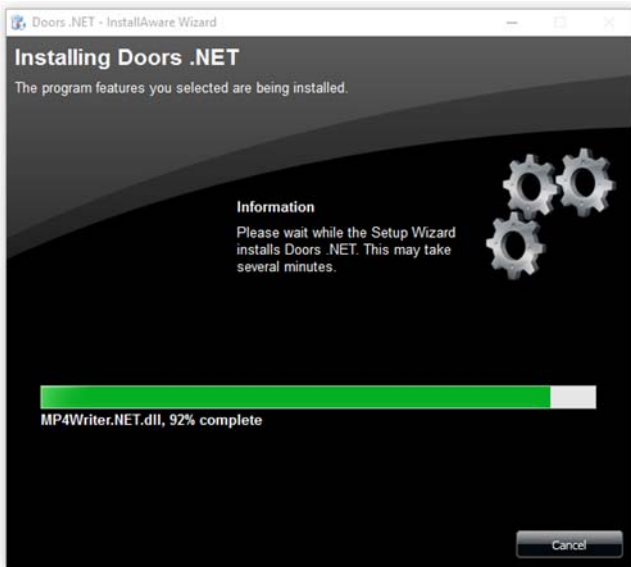


22. Click INSTALL to begin the installation.

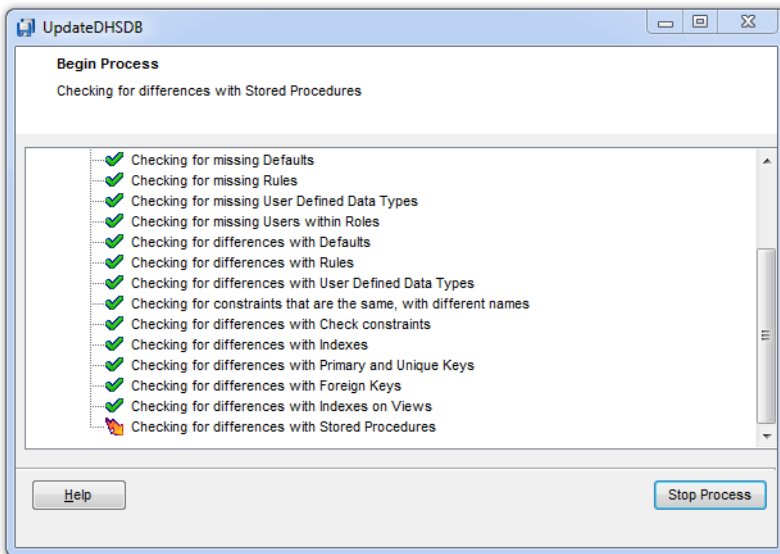
Doors.NET™ Software Installation

Application Note

23. A progress bar keeps you informed on the installation process. There are several steps during the installation process where there may be a delay of several minutes. Please be patient as the software installs.



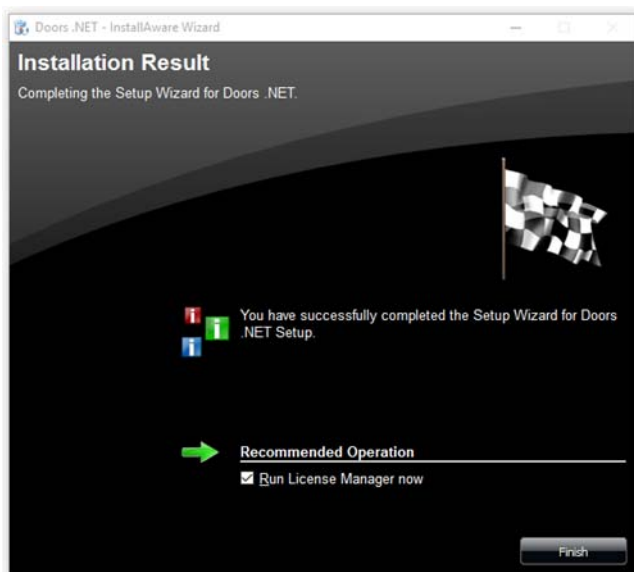
24. If you are upgrading the software from a previous revision the existing system database may need to be upgraded as well. If so, the database upgrade program will automatically run once software installation is complete. A new software installation will not perform this step.



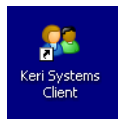
Doors.NET™ Software Installation

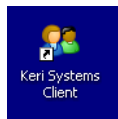
Application Note

25. The installation process is complete once the software is installed, and a new database is created or an existing database is upgraded.



26. Click FINISH to close the Installation Window.



27. If you opted for a desktop icon, the  shortcut icon is placed on your desktop.
28. You should restart the computer before you start the Doors.NET program.

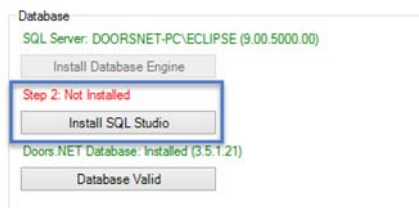
The software is now installed and ready for licensing and gateway configuration.

Refer to the [License_Manager_and_Gateway_Configuration.pdf](#) (p/n: 01565-002) document for instructions on licensing and gateway configuration.

6.0 Installing SQL Management Tools

During the installation of Doors.NET, the installation file for SQL Management Tools is copied onto the host PC. As long as you are installing Doors.NET version 3.5.1.21 or greater, you can then quickly and easily install the management tools from the License Manager, (which you are prompted to open once the installation completes). This can be done after you have activated your license and set up your hardware gateway(s).

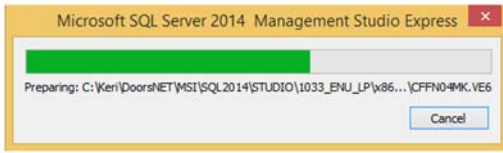
1. From within the License Manager program, ensure the Application Server is highlighted in the left pane.
2. In the right pane of the License Manager screen there is a Database section.
3. Click the button named: Install SQL Studio.



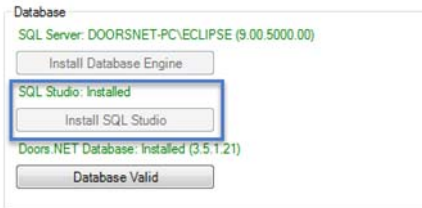
Doors.NET™ Software Installation

Application Note

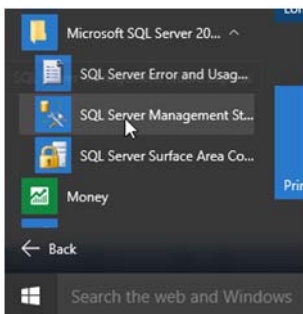
- The feature now installs.
- It takes 5 to 10 minutes for the installation to complete.



- Once installation has completed the Database section in the License Manager shows 'SQL Studio' installed.



- You can now find the SQL Studio Manager Express icon via the Start menu.



Doors.NET™ Software Installation

Application Note

7.0 Contact Keri Systems

Keri USA	Keri UK, Ireland, Europe
2305 Bering Drive San Jose, CA 95131	Unit 17 Park Farm Industrial Estate Ermine Street Buntingford Herts SG9 9AZ UK
Telephone: (800) 260-5265 (408) 435-8400	Telephone: + 44 (0) 1763 273 243
Fax: (408) 577-1792	Fax:+ 44 (0) 1763 274 106
Web: www.kerisys.com	Web: www.kerisystems.co.uk
E-mail: sales@kerisys.com techsupport@kerisys.com	E-mail: sales@kerisystems.co.uk tech-support@kerisystems.co.uk

end of document