

Doors.NET™ License Manager and Gateway Configuration

Application Note

Doors.NET installation and controller configuration is a three step process. Each of these steps has its own document, with controller configuration broken into separate documents per hardware type.

- software installation – DoorsNET_Software_Installation.pdf (p/n 01565-001)
- license manager and gateway configuration – License_Manager_and_Gateway_Configuration.pdf (p/n: 01565-002 – this document)
- controller configuration
 - Basic_PXL_Configuration_In_DoorsNET.pdf (p/n: 01238-001)
 - Basic_NXT_Configuration_In_DoorsNET.pdf (p/n: 01238-002)
 - Basic_Mercury-Powered_NXT_Configuration_In_DoorsNET.pdf (p/n: 01238-003)
 - Basic_EG_Configuration_In_DoorsNET.pdf (p/n: 01277-001)

This document describes the standard process for licensing the software to match your hardware and features, then configuring the gateway for hardware communication. It assumes the Doors.NET software is already installed on your host PC.

1.0 Get The License Key

A license key is required to enable the software. You can get a license key in three ways, depending upon your hardware type:

1. Use the license number on the case of the DVD.
This option is ONLY valid for new NXT controller installations.
2. Use the online licensing page. (<http://license.kerisys.com/>)
This option is valid for installations of new NXT, PXL, Entraguard, and Mercury Powered NXT controllers.
3. Call Keri Inside Sales.
This option is valid for any type of installation.

If you have one of these installation types you MUST call Inside Sales for a license:

- You are using legacy PXL/EG controllers (described below).
- You are using multiple hardware gateways.
- You are installing optional, licensed features.

1.1 Creating a License Key Online

You now have the ability to create your own standard Keri license key using the License Key page on the www.kerisys.com website. After entering system information the license key will be e-mailed to the installer. You can create a license for the following controller types:

- NXT
- Mercury Powered NXT
- PXL-500/Entraguard

The License Key page cannot accommodate non-standard licensing such as legacy PXL-500 and legacy Entraguard hardware (typically upgrades from Doors32). It also cannot generate Doors Professional Edition licenses, multiple hardware license types, or optional software modules.

Please contact Keri Inside Sales to obtain these types of licenses:

- United States: 001 408 435 8400 (option 1)
- United Kingdom: (01763) 273243 (option 2)

Doors.NET™ License Manager and Gateway Configuration

Application Note

1. Go to the License Key page on the Kerisys website (<http://license.kerisys.com/>).
2. Read through the License Provision Terms and Conditions.
3. Tick the confirmation/agreement box, then click Continue.

License Provision Terms and Conditions

Show / Hide ▲

1. A Doors.Net license obtained from the Keri Systems' online license provision service is free and suitable for a Doors.Net Standard installation. A license is configured for a single Gateway which reflects the hardware family to be used. Available controller types are PXL-500, NXT, NXT with Mercury Firmware and Entraguard.
2. The controller type must be known prior to issuing a Doors.Net License. Once a license is issued, it may not be modified via the Keri Systems' online license provision service.
3. Mixed controller gateways are not available via the Keri Systems' online license provision service; a custom license must be issued from Keri Systems and fees may be applicable.
4. Legacy PXL-500 and legacy Entraguard controllers may not be licensed via the Keri Systems' online license provision service; a custom license must be issued from Keri Systems and fees may be applicable.
5. Non-standard license options are not available via the Keri Systems' online license provision service; a custom license must be issued from Keri Systems and fees may be applicable.
6. Provision of a Doors.Net license is for qualified security installers and system resellers only. End-users should not use this service to obtain a license unless directed by a Keri Systems' technical support employee. Incorrect use of a Doors.Net license may cause unpredictable results, possibly rendering a system inoperable.
7. Technical support is available to Keri's authorized installers only. End-users should contact their system installer or maintenance agent.

I have read and I agree with the Keri Systems' License Provision Terms and Conditions.

Continue

4. Enter the required information in both the Installer and End-User sections. Fields denoted with an asterisk (*) are required.
5. In the System Information section, select the hardware type that will be in use. An image of the selected controller type will appear as soon as you make your selection.

Installer Information:

Company Name:*	Keri Installer
Installer Name:*	Keri Systems
Installer Email:*	tech@kerisys.com
Installer Address:	2305 Bering Drive, San Jose, California, CA 95131, USA

End-User Information:

End-User Company:*	Keri End User
End-User Name:*	Keri User
End-User Email:*	user@kerisys.com
End-User Address:	2305 Bering Drive, San Jose, California, CA 95131, USA

System Information

- I am using a PXL-500 and require a PXL gateway with my license.
- I am using an NXT controller and require a NXT gateway with my license.
- I am using an NXT Controller with Mercury firmware, I require an NXT-MSG gateway with my license.



- I am using an Entraguard and possibly PXL-500 controllers, I require a PXL gateway with my license.
[Obtain assistance with Legacy Controllers, Controller types not listed above and Advanced Software Features.](#)

Doors.NET™ License Manager and Gateway Configuration

Application Note

6. Enter the CAPTCHA validation code then click Continue.

Validation Code:



Validation code from image above:

Continue

7. A new license key will be created and it will appear on the screen.

Success

Please record your license before navigating away from this page or closing your browser.

Your license number is:

New License Finish

8. Click the Finish button and a copy of the license will also be e-mailed to the installer e-mail address.

1.2 Demo Mode

Doors.NET has a demo mode feature that allows you 30 days of limited, basic operation. This can give you an opportunity to try the software before obtaining a license. However, demo mode only supports NXT controllers; it does not support PXL, Entraguard, or Mercury Powered NXT controllers.

Doors.NET™ License Manager and Gateway Configuration

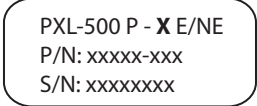
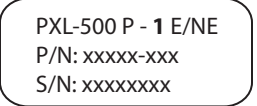
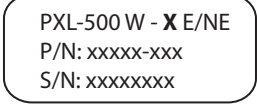
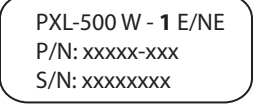
Application Note

2.0 PXL Legacy Versus Standard Controllers

If you have PXL Legacy controllers you are required to call Keri Inside Sales for a PXL Legacy license key. You will need to provide the number of Legacy PXL controllers you want to license.

2.1 Identifying Legacy versus Standard PXL Controllers

The PXL controller's model number label identifies if the controller is Standard or Legacy (refer to the figure below). Standard controllers work directly with Doors.NET using a standard license. There is no controller limit when using Standard controllers.

Standard PXL Label	Legacy PXL Label
	
	
Firmware v8.6.04 or Greater PCB p/n: 054xx-xxx	Firmware v8.5.22 or Earlier PCB p/n: 053xx-xxx

2.2 Legacy PXL Controllers

Legacy controllers require a PXL Legacy Count to be set on the license key to enable the controllers to work with Doors.NET. By default this value is set to zero. Typically Legacy controllers are carrying over from an existing Doors32 installation that is being upgraded to Doors.NET. There is a per-controller fee for licensing Legacy controllers.

Legacy PXL controllers must be at firmware v8.4.49 or greater. This firmware revision is the earliest to implement the current U.S. Daylight Standard Time dates and has the PXL's complete anti-passback implementation. A CU500 firmware upgrade is available for all PXL controllers to bring them up to the current firmware revision.

3.0 Entraguard Legacy Versus Standard Controllers

If you have Entraguard Legacy controllers you are required to call Keri Inside Sales for an Entraguard Legacy license key. You will need to provide the number of Legacy PXL controllers you want to license.

3.1 Identifying Legacy versus Standard Entraguard Controllers

Entraguard units with this level of firmware or greater are Standard Entraguard units and are not subject to licensing fees:

- Titanium and Silver - v7.8.01
- Platinum - v9.2.01

Entraguard units with these firmware revisions require Legacy licensing:

- Titanium and Silver - v7.6.09 (minimum revision allowed), v7.6.13
- Platinum - v9.1.09 (minimum revision allowed)

Doors.NET™ License Manager and Gateway Configuration

Application Note

3.2 Legacy Entraguard Controllers

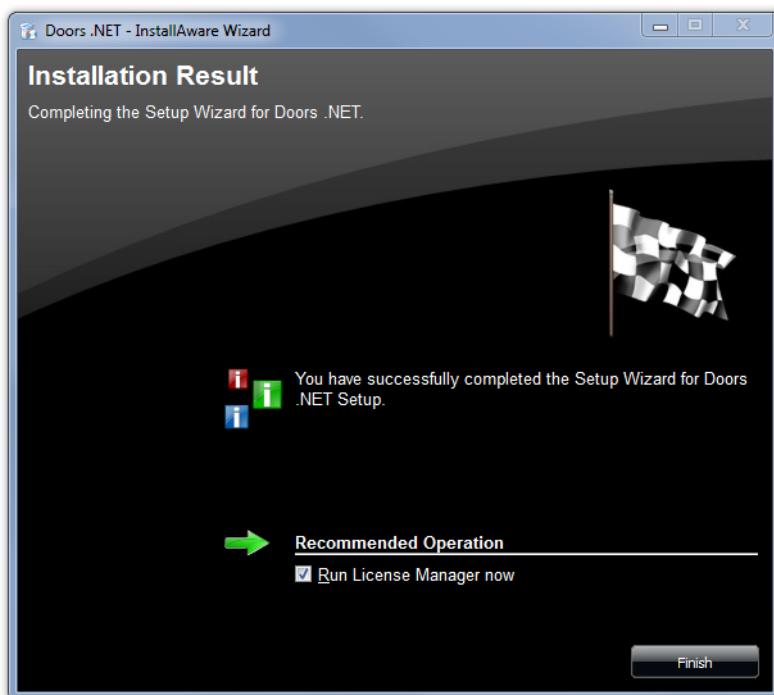
Legacy controllers require an Entraguard Legacy Count to be set on the license key to enable the controllers to work with Doors.NET. By default this value is set to zero. Typically Legacy controllers are carrying over from an existing Doors32 installation that is being upgraded to Doors.NET. There is a per-controller fee for licensing Legacy controllers.

4.0 Run the License Manager

Following installation of the software the system will need to be activated. Activation is performed using the License Manager Utility and is most easily done using an active, unrestricted Internet connection.

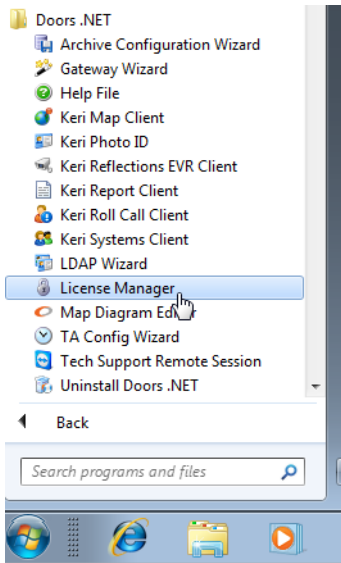
The License Manager registers and activates your software and validates any applicable features or controller values, allowing system use. Please have your license key ready before beginning this section.

1. Once the software has successfully installed you will be prompted to run the License Manager.



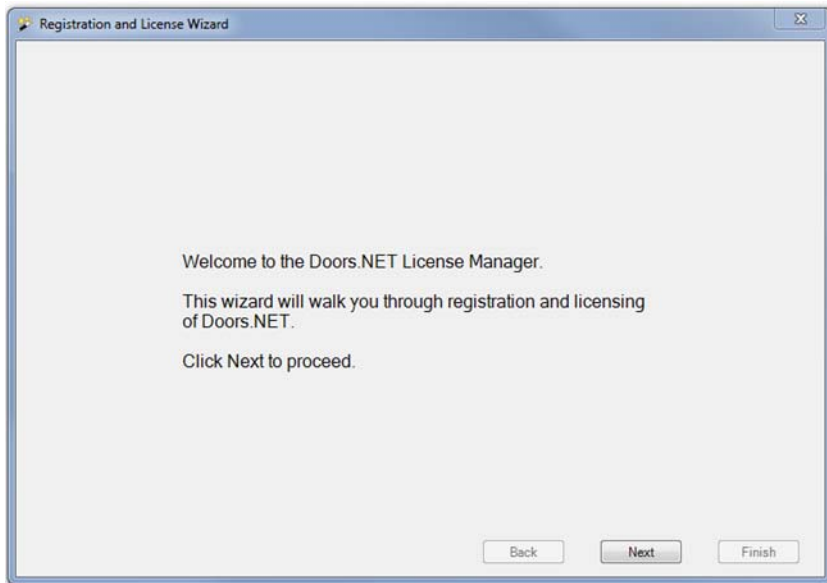
Doors.NET™ License Manager and Gateway Configuration Application Note

2. The License Manager can also be opened by clicking Start > All Programs > Doors.NET > License Manager.



3. Or it can be run from the C:\Keri\DoorsNET directory.

4. If it is the first time you have run the License Manager you will see the following welcome screen.

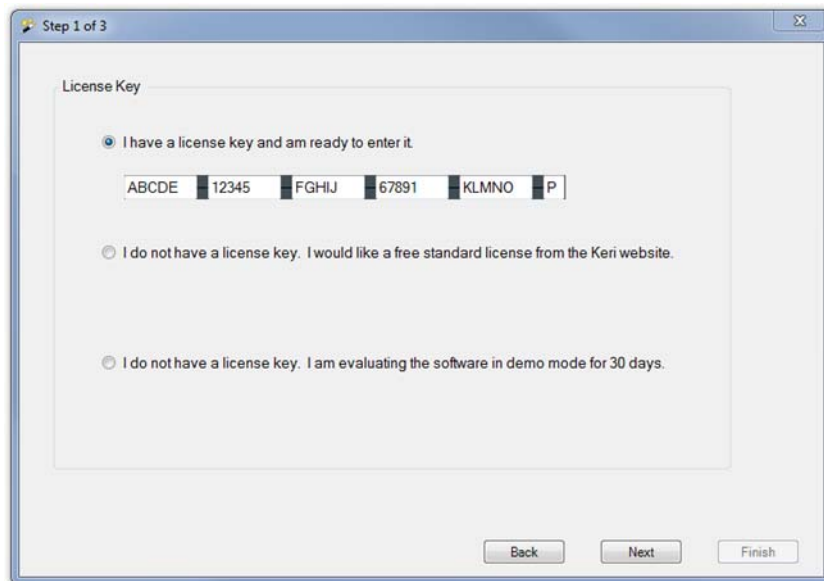


Doors.NET™ License Manager and Gateway Configuration

Application Note

5. The next screen you see is where you enter your license key. There are several ways you can retrieve a license key if you do not have one, depending upon your hardware and installation type:
 - Use the license number on the case of the DVD.
 - This option is **ONLY** valid for new NXT controller installations.
 - Not all DVD cases will have a license number.
 - Use the online licensing page. (<http://license.kerisys.com/>)
 - This option is valid for installations of new NXT, PXL, Entraguard, and Mercury Powered NXT controllers.
 - Call Keri Inside Sales.
 - This option is valid for any type of installation.
 - If you have one of these installation types you **MUST** call Inside Sales for a license:
 - You are using legacy PXL/EG controllers (described below).
 - You are using multiple hardware gateways.
 - You are installing optional, licensed features.
6. If you do not have a license key you can create a new key as long as you have an active, non-restricted internet connection. Select 'I do not have a license key. I would like a free standard license from the Keri website.' Refer to Section 2.1, below, for instructions.
7. Enter your key then click Next.

NOTE: Once you have your license key you can then copy and paste the key into the fields shown below. Put the cursor into the first text field, then paste.



The screenshot shows a window titled "Step 1 of 3" with a "License Key" section. It contains three radio button options: "I have a license key and am ready to enter it" (selected), "I do not have a license key. I would like a free standard license from the Keri website.", and "I do not have a license key. I am evaluating the software in demo mode for 30 days." Below the first option is a text input field with a license key example: "ABCDE 12345 FGHIJ 67891 KLMNO P". At the bottom are "Back", "Next", and "Finish" buttons.

Doors.NET™ License Manager and Gateway Configuration Application Note

8. Next is the registration page. Enter information about the site and installer contact details.

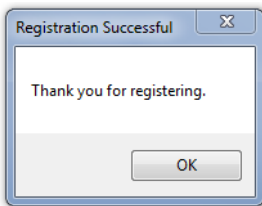
The screenshot shows a registration window titled "Step 2 of 3". It contains two sections: "End User Information" and "Integrator Information".

End User Information		Integrator Information	
Last Name	User	Last Name	Installer
First Name	DoorsNET	First Name	Keri
Company	Keri Systems Inc	Company	Keri Systems
Address	2305, Bering Drive,	Phone	001 800-260-5265
City	San Jose		
State	CA		
Zip Code	95131		
Country	USA		
Phone	001 800-260-5265		
Email	sales@kerisys.com		
Site Name	Head Office		

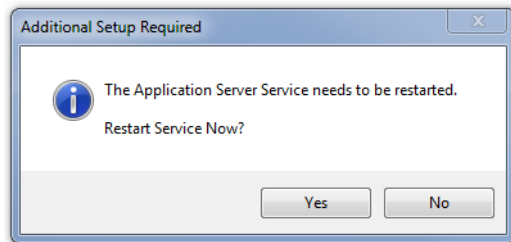
At the bottom of the window are three buttons: "Back", "Next", and "Finish".

9. You will then see a summary page. Click next to complete the task.

10. Within a few seconds you should see a registration successful notification. Click OK to this.



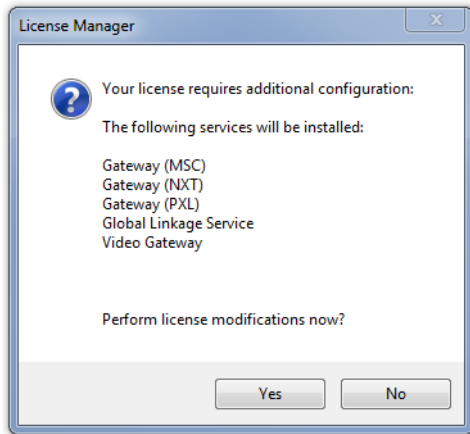
11. The next notification is to restart/start the Application Server Windows Service. Click Yes to this.



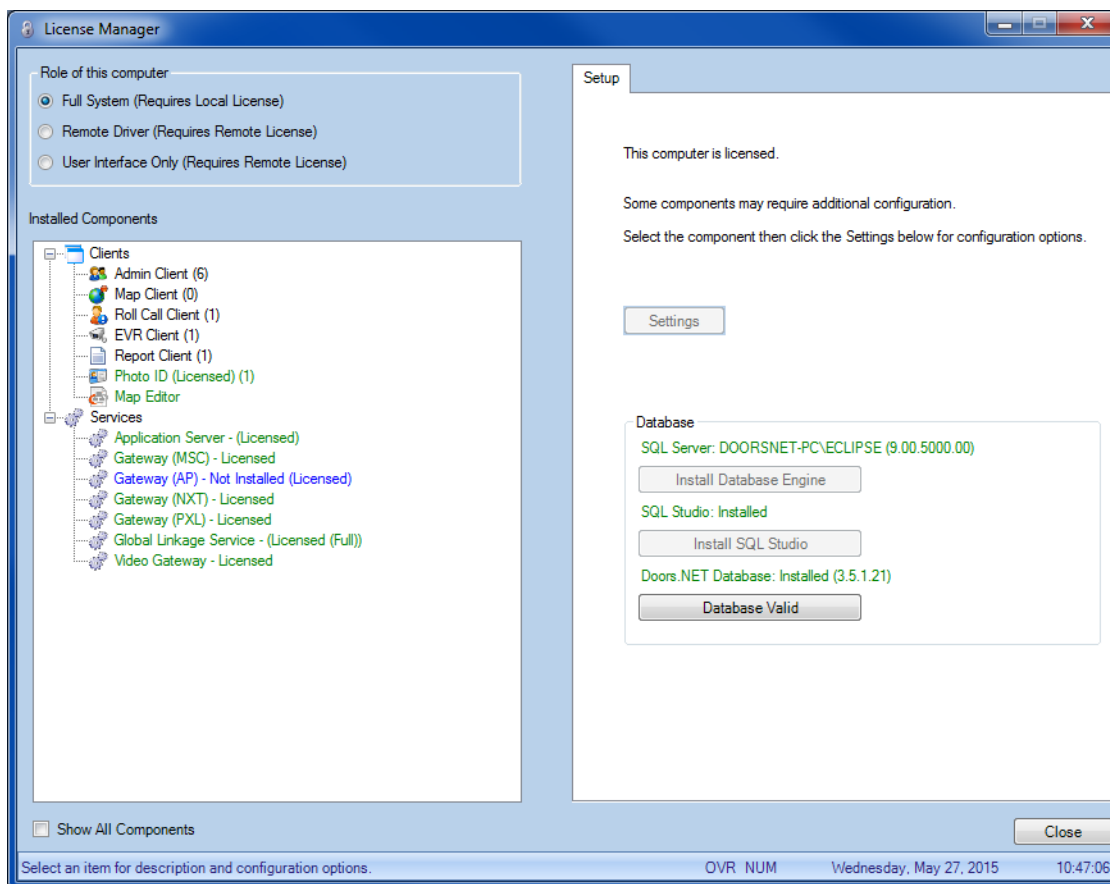
Doors.NET™ License Manager and Gateway Configuration

Application Note

- Once the Application Service service has restarted you will be prompted to install the hardware communication gateway services plus any other Doors.NET feature that requires a Windows service. Click the Yes button to install the services.



- When the Doors.NET Windows services have successfully been installed the License Manager will automatically open.



- The software is now fully activated and ready for Gateway Configuration.

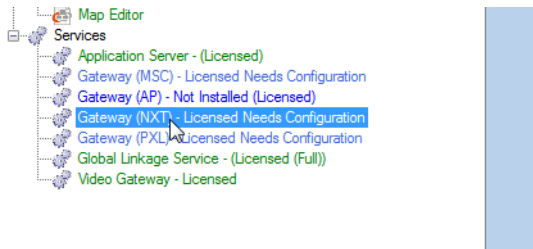
Doors.NET™ License Manager and Gateway Configuration

Application Note

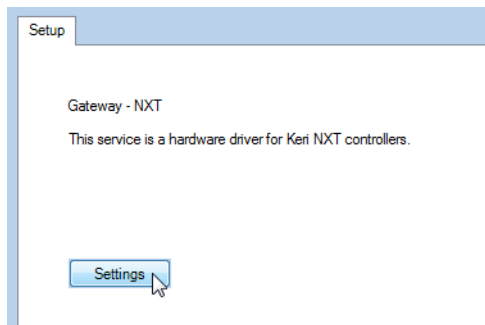
5.0 Gateway Configuration

Effective from version 3.5.1.21 the hardware communications gateway is setup via the License Manager (which you are prompted to run on the host PC following installation of the software). Version 3.5.1.21 automatically installs all supported gateway types. You can then create the gateway if it is enabled in your license.

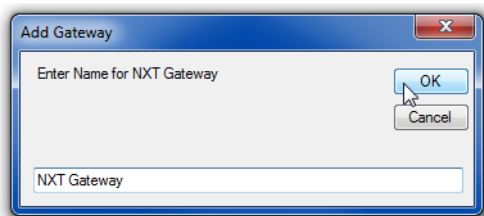
1. Click to highlight the installed gateway service listed within the License Manager.



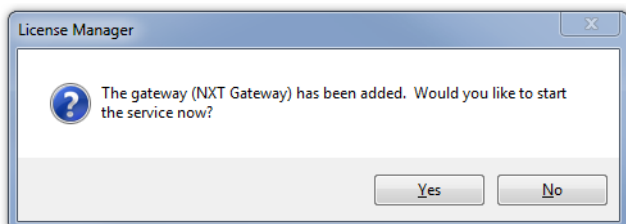
2. Click the Settings button.



3. The Add Gateway window will appear prompting you to enter a name for the gateway.
4. Enter the name then click OK.



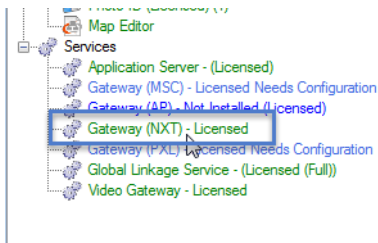
5. The gateway will be added to the database. You will then see a prompt to start the gateway service. Click Yes to do this.



Doors.NET™ License Manager and Gateway Configuration

Application Note

6. You should see one more notification stating that the service has started. OK this message.
7. The gateway service should then be displayed in the License Manager indicating it is both licensed AND configured.



8. You can now close the License Manager as the gateway setup is complete.
9. The software is now licensed and the gateway is configured.

Refer to the appropriate hardware configuration document for instructions.

- Basic_PXL_Configuration_In_DoorsNET.pdf (p/n: 01238-001)
- Basic_NXT_Configuration_In_DoorsNET.pdf (p/n: 01238-002)
- Basic_Mercury-Powered_NXT_Configuration_In_DoorsNET.pdf (p/n: 01238-003)
- Basic_EG_Configuration_In_DoorsNET.pdf (p/n: 01277-001)

6.0 Contact Keri Systems

Keri USA	Keri UK, Ireland, Europe
2305 Bering Drive San Jose, CA 95131	Unit 17 Park Farm Industrial Estate Ermine Street Buntingford Herts SG9 9AZ UK
Telephone: (800) 260-5265 (408) 435-8400	Telephone: + 44 (0) 1763 273 243
Fax: (408) 577-1792	Fax: + 44 (0) 1763 274 106
Web: www.kerisys.com	Web: www.kerisystems.co.uk
E-mail: sales@kerisys.com techsupport@kerisys.com	E-mail: sales@kerisystems.co.uk tech-support@kerisystems.co.uk

end of document