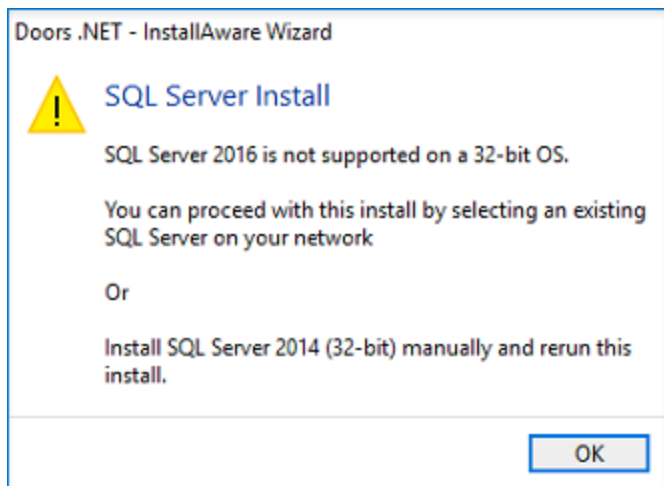


# 1.0 Installation Guide

## 1.1 Introduction

SQL 2016 does not work with 32-bit versions of Windows. Therefore if you are using a 32-bit version you will have to manually download and install SQL Express (we recommend you install SQL Express 2014) as that is the most recent version of SQL Server that supports a 32-bit operating system.

We include the new SQL Server 2016 because of the recent enhancements and modifications are built on the latest version of .NET Framework (version 4.6).



If you are using a 32-bit version of Windows, a 64-bit version of Windows 7 or Windows Server 2008 R2 (Incl. SP1) you will need to install SQL Express manually. You can download the installation file directly from the Microsoft website. The link to use is noted further on (in section 1.4).

**NOTE:** If you are upgrading an existing installation of Doors.NET then this document does not apply. Existing systems will use the existing, installed version of SQL Server.

## 1.2 Which Operating Systems Does This Apply To?

You will need to manually install SQL Express 2014 if you are using one of the following:

- Any version of Windows 7
- Windows 8.1 (32-bit)
- Windows 10 Home (32-bit)
- Windows 10 Pro (32-bit)
- Windows Server 2008 R2 (Incl. SP1)

## 1.3 What Else is There to Consider?

There are certain requirements to be aware of when manually installing SQL Express:

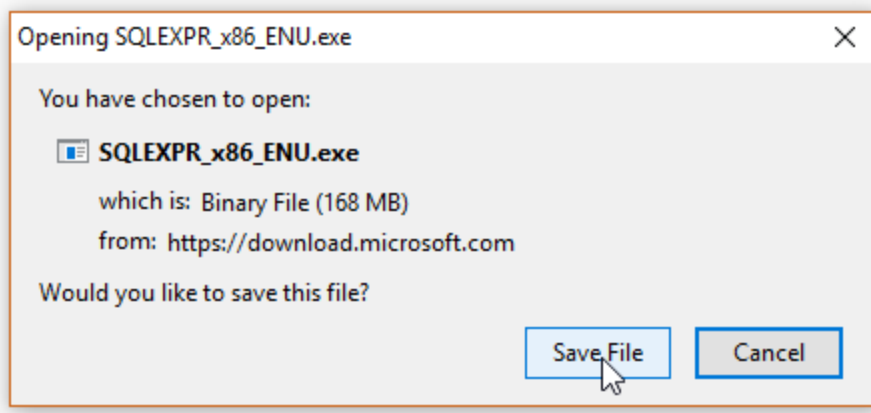
- The database instance **MUST** be named ECLIPSE
- Database Authentication **MUST** be set to **SQL Mixed Mode** (and not **Windows Authentication**).  
*- the required SQL username and password are noted in section 1.5.*

## 1.4 Downloading the SQL Express Installation File

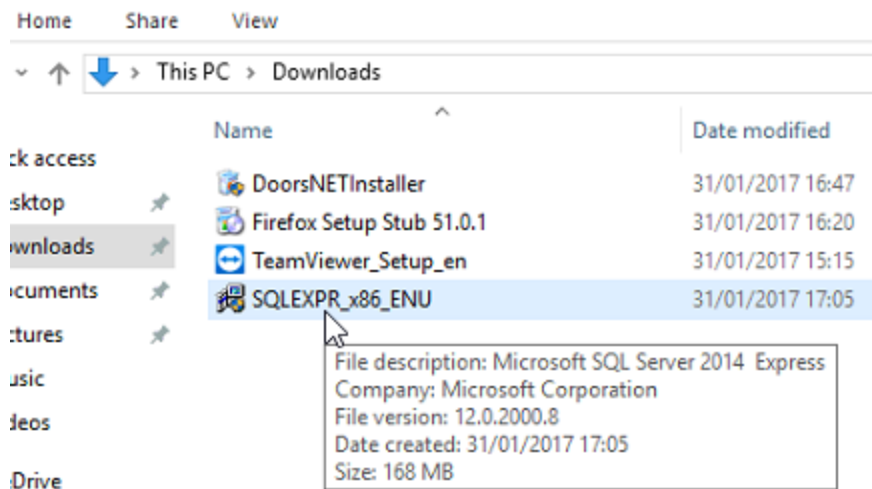
The software can be downloaded from the Microsoft website at the following location (correct at the time of writing):

<https://www.microsoft.com/en-gb/download/details.aspx?id=42299>

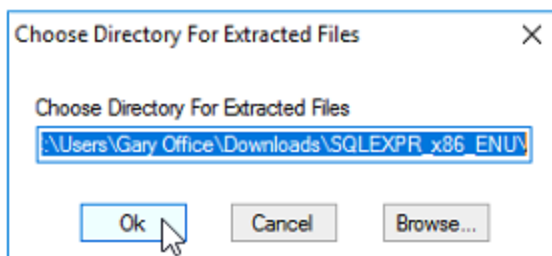
1. Once you are on the download page, click the DOWNLOAD button.
2. Click NEXT and then save the file to your PC.



3. On a default Windows system you will find the file in your Downloads folder.



4. A dialog box will appear, prompting you to extract the files.

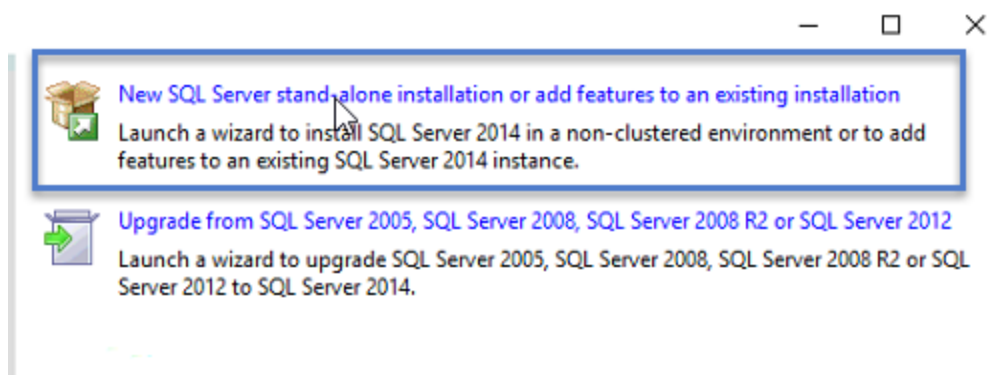


5. Within a few seconds, all the files will have extracted, including the installation files.

### 1.5 Installing SQL Express 2014

Typically, the Installation will automatically begin as soon as all the files have been extracted.

1. The first screen to appear gives you the option to perform a new install (or add features) and the second option is to upgrade a version of SQL Server.



2. Next, we recommend that you select the option to allow automatic updates.

Microsoft Update offers security and other important updates for Windows and other Microsoft software, including SQL Server 2014. Updates are delivered using Automatic Updates, or you can visit the Microsoft Update website.

Use Microsoft Update to check for updates (recommended)

[Microsoft Update FAQ](#)

[Microsoft Update Privacy Statement](#)

3. The installer will then scan for any available updates.
4. You will then see the Terms and Conditions list. Read through and accept.

**MICROSOFT SOFTWARE LICENSE TERMS**

**MICROSOFT SQL SERVER 2014 EXPRESS**

These license terms are an agreement between Microsoft Corporation (or its affiliate(s), including one or more of its subsidiaries) and you. Please read them. They apply to the software that you are installing, which includes the media on which you received it, if any. The terms also apply to any updates, supplements, Internet-based content, and other downloaded content associated with the software, including third party content, if any.

- updates,
- supplements,

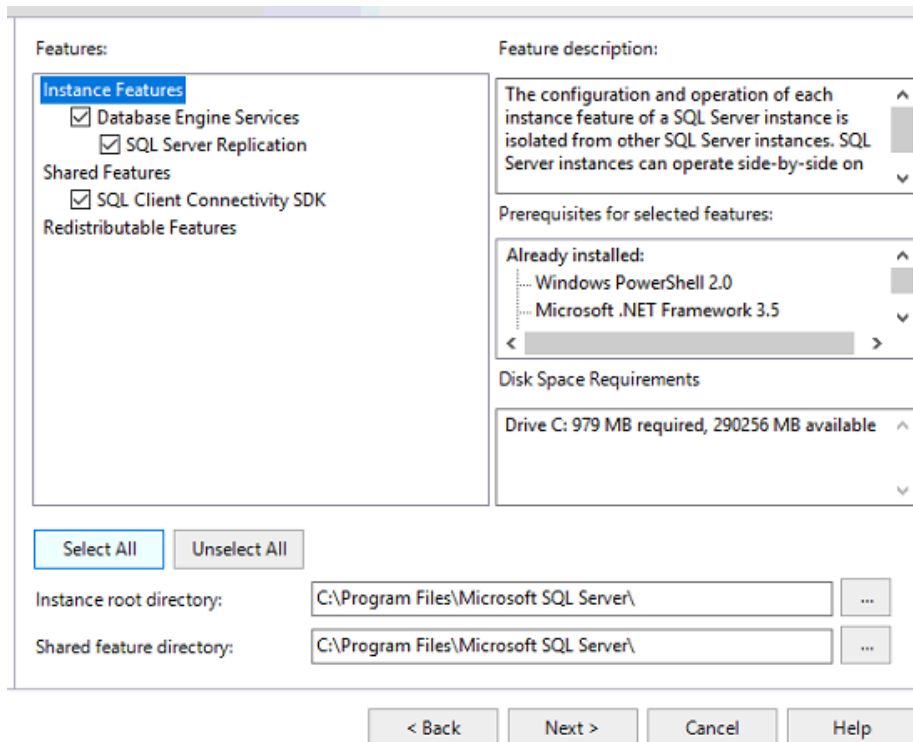
I accept the license terms.

Turn on Customer Experience Improvement Program ("CEIP") and Error Reporting. This will help improve the quality, reliability and performance of Microsoft SQL Server 2014.

[See the Microsoft SQL Server 2014 Privacy Statement for more information.](#)

\* Microsoft SQL Server 2014 also includes a Visual Studio component that will install and run on your computer.

5. All the required fields should then be selected, so click NEXT again.



Features:

**Instance Features**

- Database Engine Services
- SQL Server Replication

Shared Features

- SQL Client Connectivity SDK

Redistributable Features

Feature description:

The configuration and operation of each instance feature of a SQL Server instance is isolated from other SQL Server instances. SQL Server instances can operate side-by-side on the same computer.

Prerequisites for selected features:

Already installed:

- Windows PowerShell 2.0
- Microsoft .NET Framework 3.5

Disk Space Requirements

Drive C: 979 MB required, 290256 MB available

Select All Unselect All

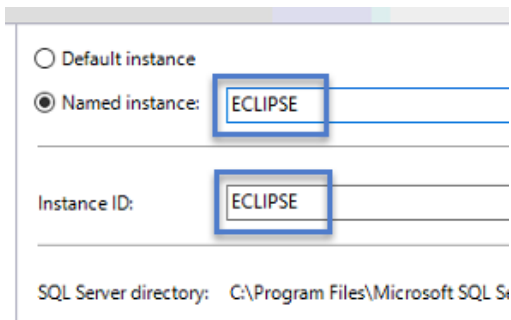
Instance root directory: C:\Program Files\Microsoft SQL Server\ ...

Shared feature directory: C:\Program Files\Microsoft SQL Server\ ...

< Back Next > Cancel Help

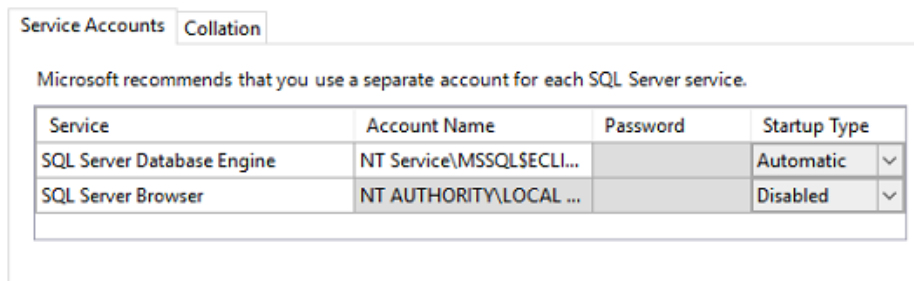
6. You will now be required to specify the name of the SQL Instance...

**IMPORTANT:** You MUST specify the name as ECLIPSE.



Default instance  
 Named instance:   
 Instance ID:   
 SQL Server directory: C:\Program Files\Microsoft SQL S

- The Server Configuration settings should be left at their default values, unless they specifically need to be changed.

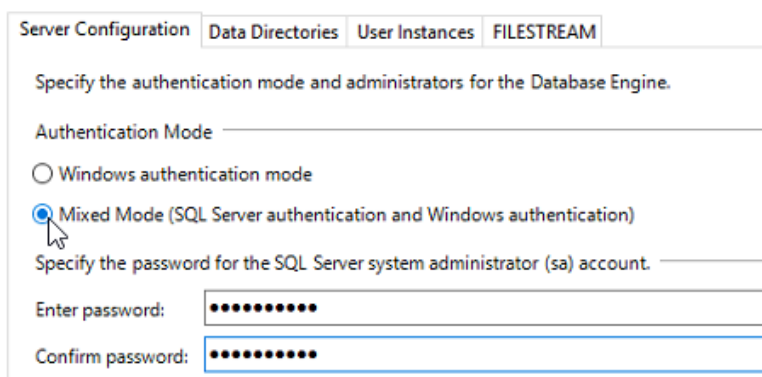


Service Accounts Collation

Microsoft recommends that you use a separate account for each SQL Server service.

Service	Account Name	Password	Startup Type
SQL Server Database Engine	NT Service\MSSQLSECLI...		Automatic <input type="text"/>
SQL Server Browser	NT AUTHORITY\LOCAL ...		Disabled <input type="text"/>

- Next are the database configurations settings - Here you will specify the SQL username and password that will be used to install SQL
  - Authentication should be set to **Mixed Mode** - **You should not use Windows Authentication.**
  - **Enter the password as: dhs\$e700** - This is the password associated with the SQL 'sa' account and must be entered exactly as displayed.



Server Configuration Data Directories User Instances FILESTREAM

Specify the authentication mode and administrators for the Database Engine.

Authentication Mode \_\_\_\_\_

Windows authentication mode  
 Mixed Mode (SQL Server authentication and Windows authentication)

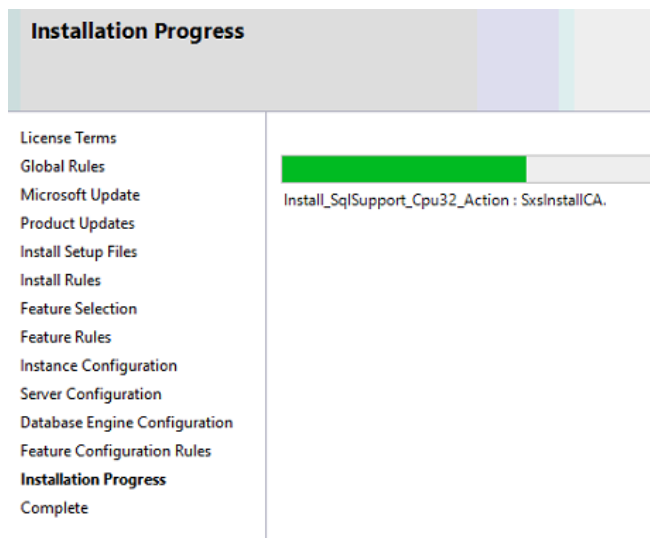
Specify the password for the SQL Server system administrator (sa) account. \_\_\_\_\_

Enter password:

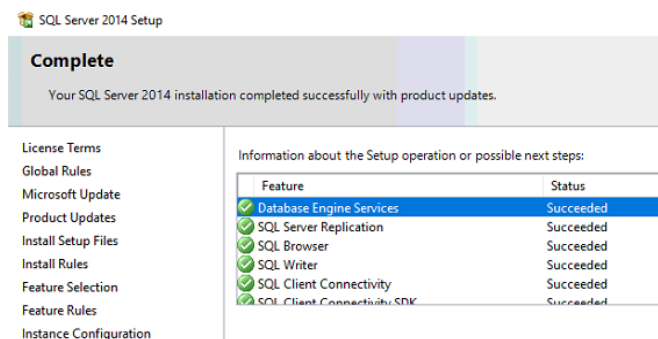
Confirm password:

**NOTE:** The sa account is used to install SQL. Once installed is not used to access the Doors.NET database by the Application Server. When the Doors.NET database is installed, the SQL account is automatically added - the Doors.NET SQL account is: user name - **dhsuser** and the default password is: **eclip\$e**

9. SQL Server Express installation will then begin.



10. Installation will take approximately 10 minutes to complete.

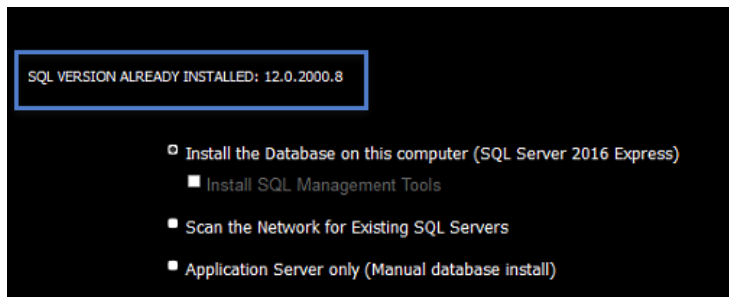


11. You can now close the installation window.

## 2.0 Installing the Doors.NET Database

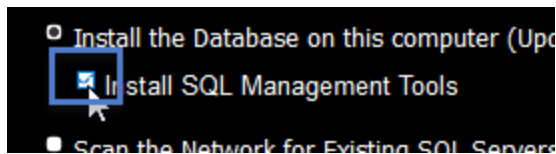
### 2.1 Run the Doors.NET installer

The installer will now detect that an SQL version is installed - you can then select the option to install the Doors.NET database on 'this computer'.



**NOTE:** On this screen you should consider placing a check mark in the option to 'Install SQL Management Tools' - Otherwise referred to as SQL Server Management Studio.

- This management tool, once installed, allows you to configure, manage and administer your Doors.NET SQL database (and it is required for restoring a system backup or a database upgrade from a Doors32 system).

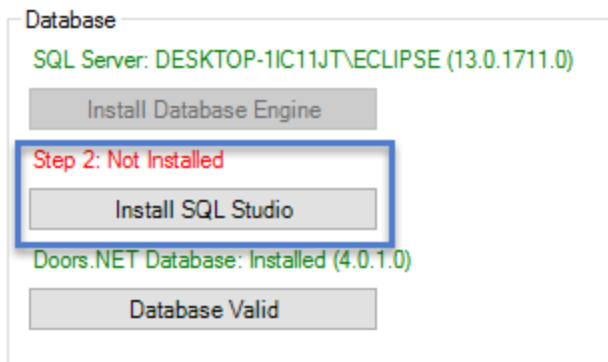


### 2.2 Installing SQL Management Tools

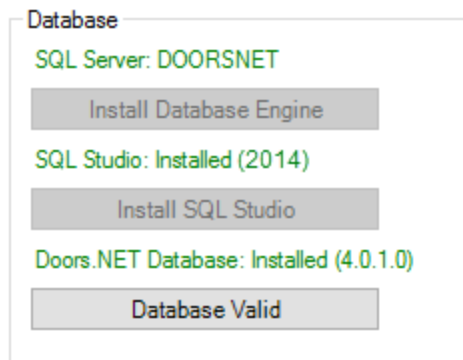
1. Once Doors.NET has been installed you will be prompted to run the License Manager.
2. Enter your license key and activate your license.
3. On the License Manager window you should select Application Server from the list on the left.
4. On the right, you will see the 'Database' section - The red text above the Install SQL Studio button should state: Not Installed.



5. Click the Install SQL Studio Button.



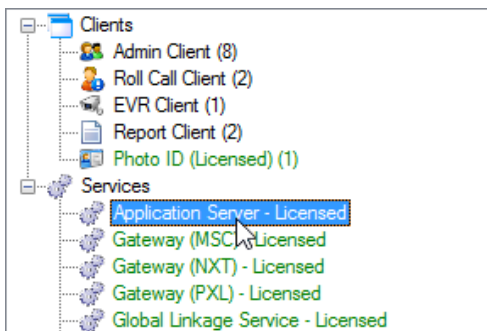
6. An install wizard will appear. Follow the on-screen instructions to install the tool.
7. Installation of SQL Studio Manager should take around 20-30 minutes.
8. Once complete, close then re-open License Manager.
9. Select Application Server again and SQL Studio should be indicated as installed.



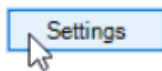
## 2.3 Test the Database Connection

Once the database and SQL Studio Manager are both installed you should test the connection to the database.

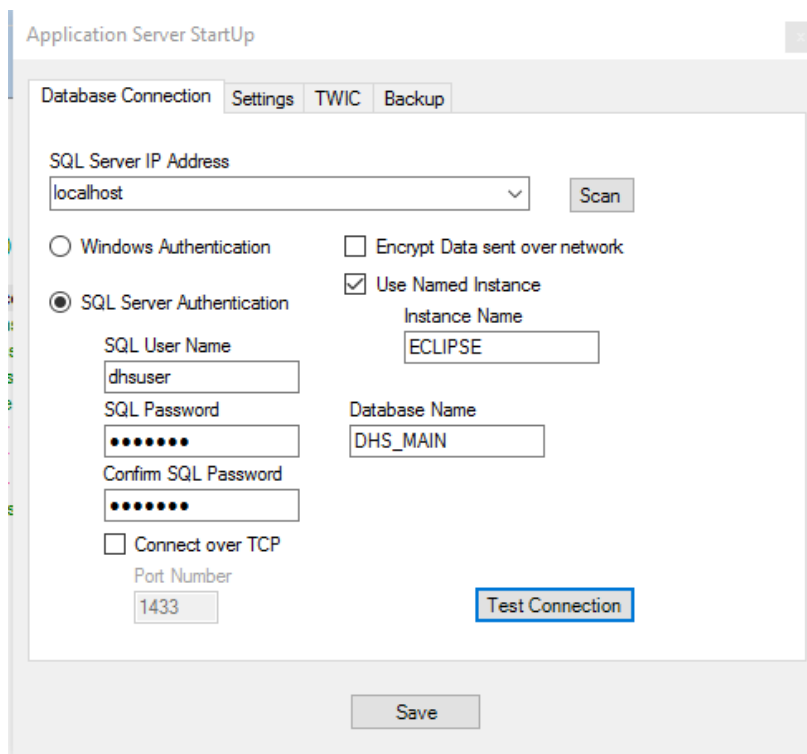
1. With **Application Server** still selected (listed on the left).



2. Then click the SETTINGS button.



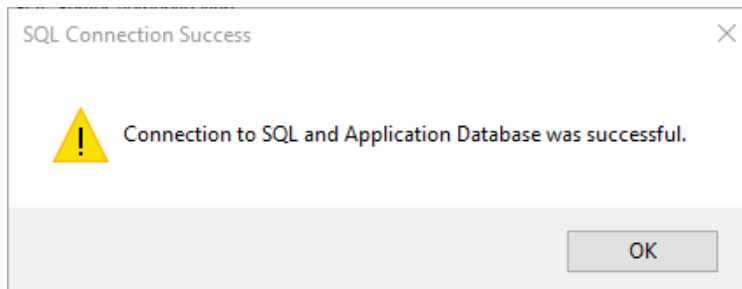
3. Your database connection settings should appear as shown here:



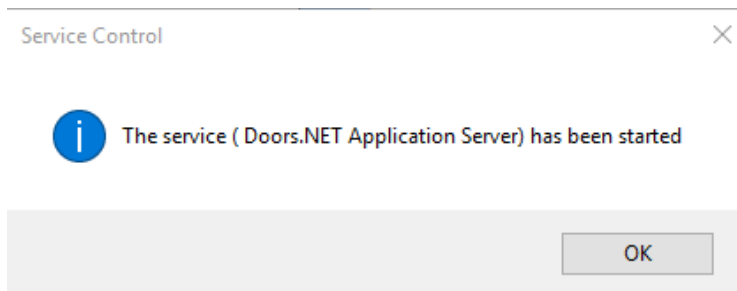
4. Click the TEST CONNECTION button.



5. Then YES to proceed.
6. Almost immediately you should see a connection successful message.



7. Click the SAVE button.
8. You will then be prompted to start the Application Server Windows service.
9. Moments later you will see a message confirming the Application Server is started.

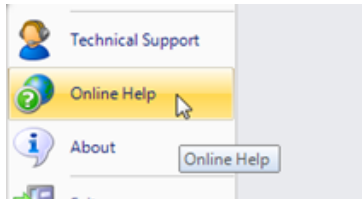


10. You are now ready to use your Doors.NET system

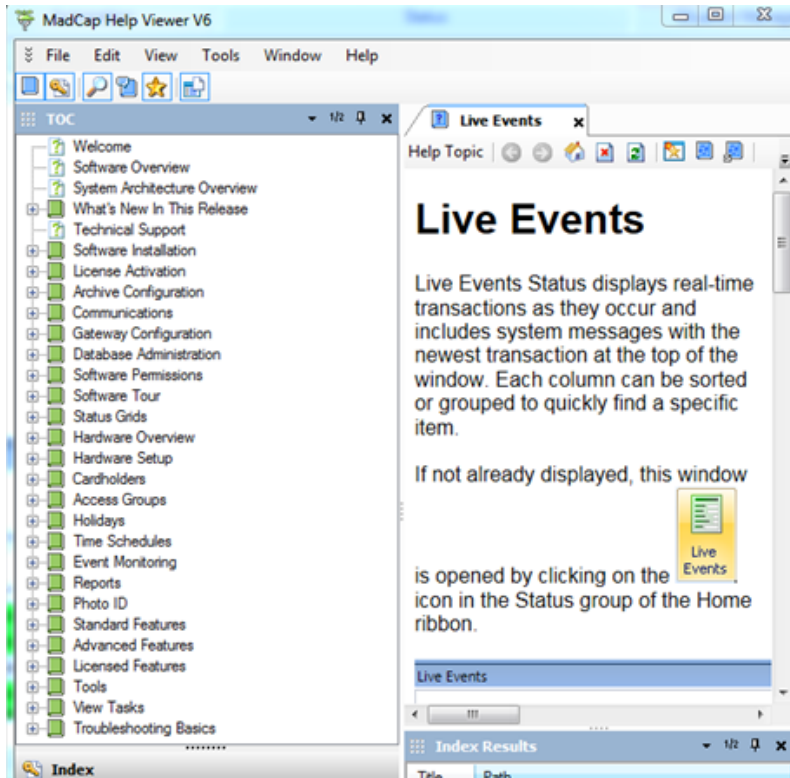
## Further Information

For further information about adding cardholders to Doors.NET, adding hardware, backing up and restoring the database, etc, please refer to the help file which is included in the program.

The help file can be accessed via the Keri logo image in the top left corner of the client.



Or you can access it by pressing the F1 key while on any screen. The help file will open out on the page related to the screen you are on.



### Contact Keri Systems

Keri USA	Keri UK
2305 Bering Drive, San Jose, CA 95131	Unit 17, Park Farm Industrial Estate, Ermine Street, Buntingford, Herts, SG9 9AZ.
Telephone: (800) 260-5265 (408) 435-8400	Tel: +44 (0) 1763 273243
Fax: (408) 577-1792	Fax: +44 (0) 1763 274106
Web: <a href="http://www.kerisys.com">www.kerisys.com</a>	Web: <a href="http://www.kerisystems.co.uk">www.kerisystems.co.uk</a>
E-mail: <a href="mailto:sales@kerisys.com">sales@kerisys.com</a> <a href="mailto:techsupport@kerisys.com">techsupport@kerisys.com</a>	E-mail: <a href="mailto:sales@kerisystems.co.uk">sales@kerisystems.co.uk</a> <a href="mailto:tech-support@kerisystems.co.uk">tech-support@kerisystems.co.uk</a>