

# Doors NetXtreme™ Software Installation Guide

---

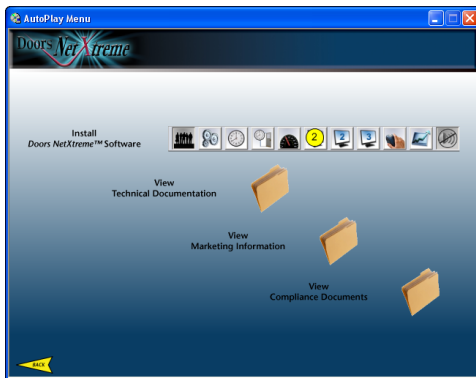
## 1.0 Software Installation

Insert the *Doors NetXtreme (DoorsNXT)* CD into the CD-ROM drive. The AutoRun menu appears (see Figure 1).



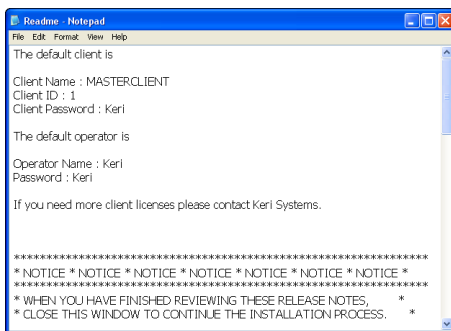
**Figure 1: DoorsNXT AutoRun Menu**

1. Click on the picture of the NXT hardware. The NXT installation window appears (see Figure 2).



**Figure 2: NXT Installation**

2. Click on the picture of the *DoorsNXT* software toolbar. Follow the rest of the installation process.
3. Be sure to save the information given in the Notepad program at the end of the installation (see Figure 3). This information will give you the password and other necessary information to get *DoorsNXT* working properly.



**Figure 3: DoorsNXT Password**

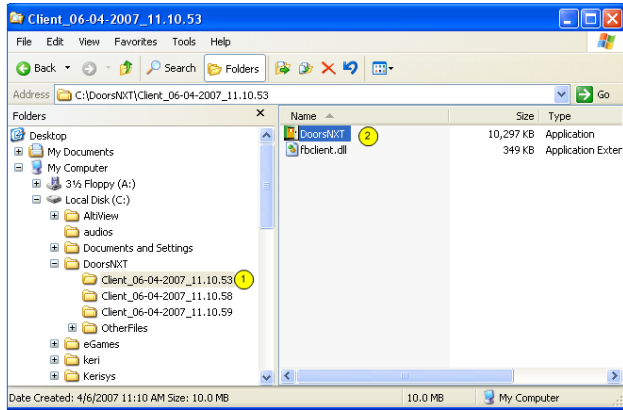
# Doors NetXtreme™

## Software Installation Guide

### 2.0 Setup Client

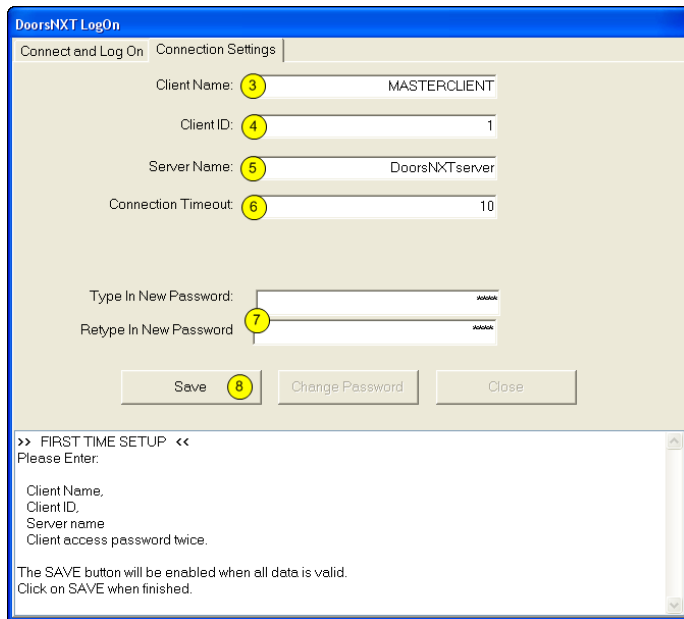
Once the software has been installed. The Client must be configured.

*NOTE: Licensing for the first Client is free. To use additional clients, contact Keri Systems for additional licenses.*



**Figure 4: Windows Explorer - Client Application**

1. Open up Windows Explorer and locate the *DoorsNXT* installation. Click on the folder created for the first Client. The number of Clients available is determined by the selections made in the software installation process and will vary depending on installation.
2. Double-click on the *DoorsNXT* application. *DoorsNXT* will open to the Connection Settings window (see Figure 5).



**Figure 5: DoorsNXT - Connection Settings**

3. In the Client Name field, enter “MASTERCLIENT.”

*NOTE: For multiple clients, you may want to enter “CLIENT1” or “CLIENT2,” to help distinguish the clients from each other.*

# Doors NetXtreme™

## Software Installation Guide

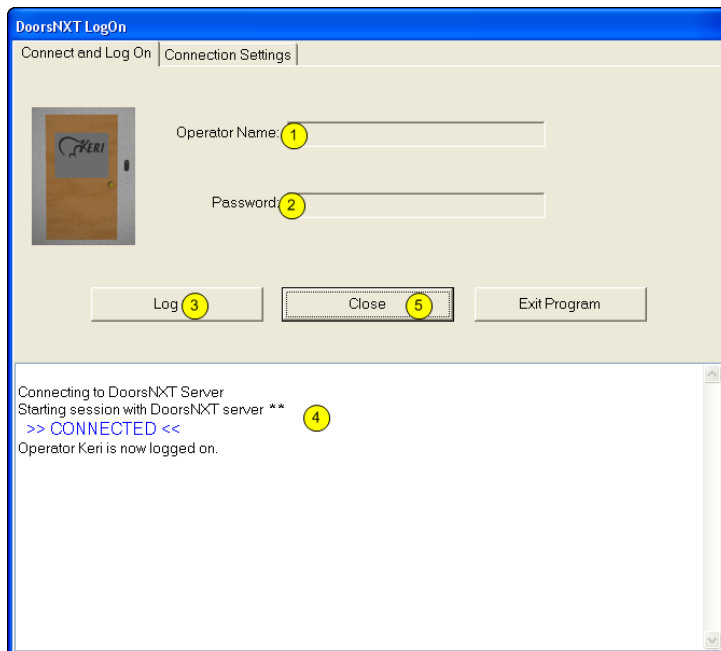
---

4. In the Client ID field, enter an integer to be assigned to the client. It is recommended to start with 1 and continuing on sequentially with the remaining clients.
5. In the Server Name field, enter the name of the server.
6. Leave the Connection Timeout field at the default of “10” seconds.
7. Type in the new password in the two fields given. The password was given to you during the installation of *DoorsNXT* (see Figure 3 on page 1).
8. Click on the  button.

*NOTE: Repeat steps 1-7 for each Client.*

### 3.0 Log On to *DoorsNXT*

Click on the Connect and Log On tab.



**Figure 6: Log On *DoorsNXT***

1. Enter the Operator Name as shown on Figure 3 on page 1.
2. Enter the Password as shown on Figure 3 on page 1.
3. Click on the  button.
4. If everything has been done correctly, you will receive confirmation that you are logged on to the server.
5. Click on the Close button to close the Log On window.

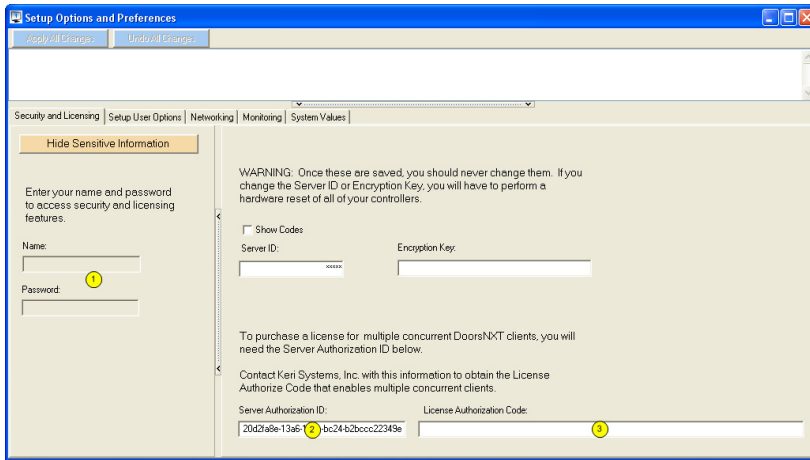
# Doors NetXtreme™

## Software Installation Guide

### 4.0 Client Licensing

The first client is included and may be used on as many computers as desired, however, in order to run concurrent clients a license must be purchased from Keri Systems.

Setup > Options and Preferences > Security and Licensing (tab)



**Figure 7: Client Licensing**

1. Enter the Operator Name and Password as shown in “Log On to DoorsNXT” on page 3. When the correct Operator Name and Password is entered, the side window appears automatically.
2. Contact Keri Systems with the Server Authorization ID number. Keri Systems will generate an authorization code.
3. Enter the Licensing Authorization Code in the field provided. You will now be able to run multiple clients simultaneously.

### Contact Keri Systems:

Keri USA	Keri UK, Ireland, Europe
2305 Bering Drive San Jose, CA 95131	Unit 17 Park Farm Industrial Estate Ermine Street Buntingford Herts SG9 9AZ UK
Telephone: (800) 260-5265 (408) 435-8400	Telephone: + 44 (0) 870 444 7234
Fax: (408) 435-7163	Fax: + 44 (0) 1763 274 106
Web: www.kerisys.com	Web: www.kerisystems.co.uk
E-mail: sales@kerisys.com techsupport@kerisys.com	E-mail: sales@kerisystems.co.uk tech-support@kerisystems.co.uk

End of document.