


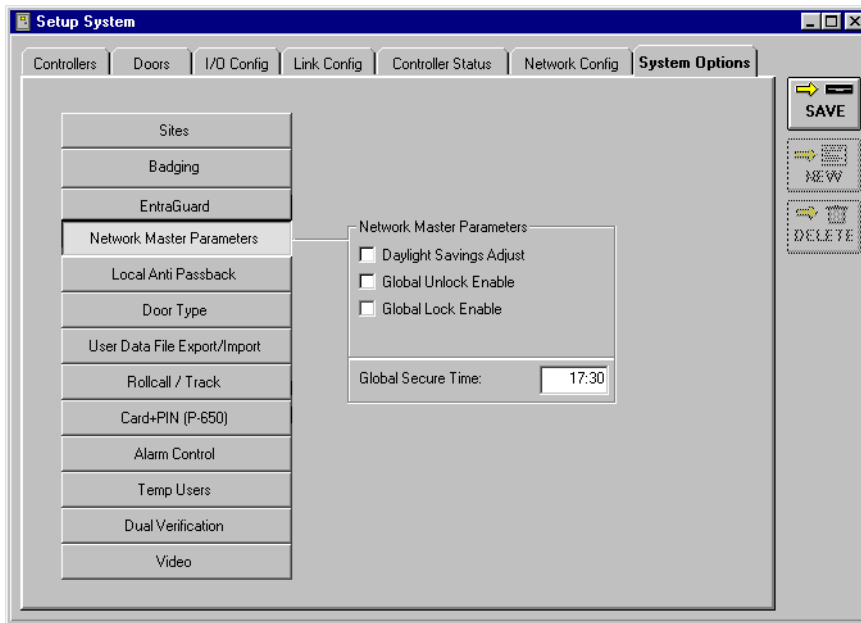
# Daylight Saving Time Adjustment

Due to a change in US Federal law governing the beginning and ending dates for Daylight Saving Time, the firmware on PXL-250s (v6.3.61), PXL-500s/PXL-510s (v8.4.47), and EntraGuards (Gold/Silver/Titanium v7.3.17 and Platinum v9.0.3) have been changed to reflect the new dates.


Beginning in 2007, Daylight Saving Time will begin (“Spring Forward”) on the second Sunday in March. Daylight Saving Time will end (“Fall Back”) on the first Sunday in November.

As these new dates apply only within the US, there are instances where some may wish to opt out of the automatic Daylight Saving Time adjustment. Perform the following steps to opt out of the Daylight Saving Time firmware update.

1. In the *Doors* software, click on Setup > System > System Options > . Remove the check in the “Daylight Savings Adjust” option by clicking on the check (see Figure 1).



**Figure 1: Daylight Savings Adjust**

2. Verify the time has been changed on the host computer. This is typically done automatically by the operating system.
3. Manually update the date/time on the controller network through the *Doors* software by clicking on Setup > System > Controllers > .

End of document.