

PXL Access Rights Limitations

Application Note

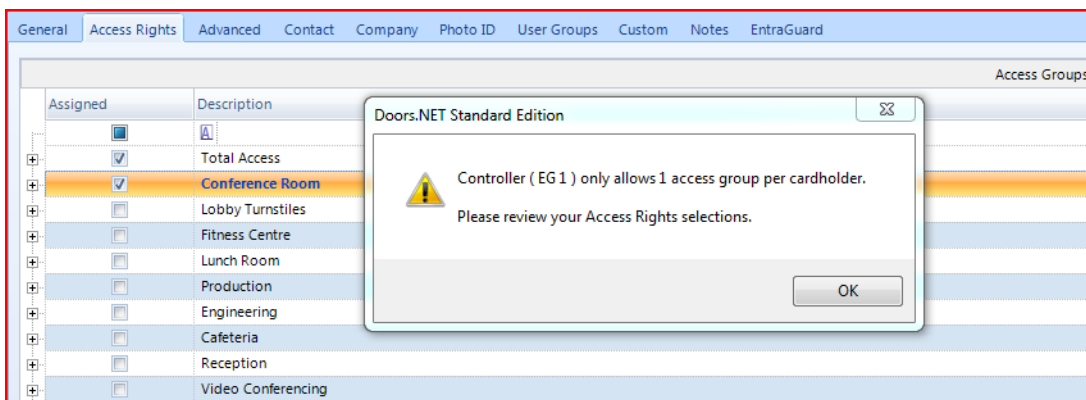
When using PXL controllers there are certain limitations related to the assignment of access groups.

- You can only select multiple access groups if each access group contains a unique list of PXL controllers.
- As long as your access groups contain unique lists of PXL controllers, you can add as many access groups to the cardholder as you want.

Examples of Assigning PXL Access Rights to Cardholders

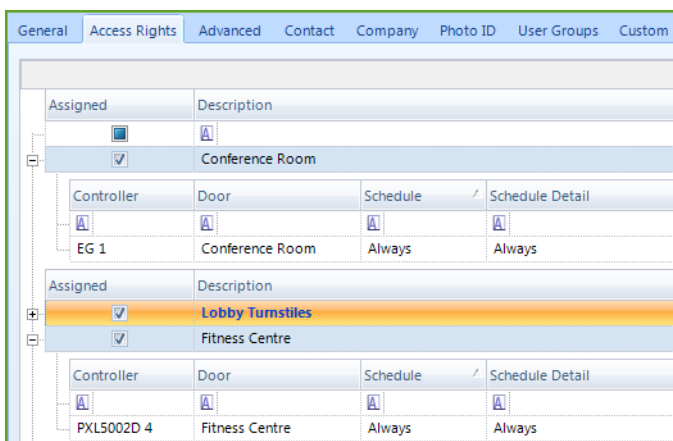
1. Cardholder Assigned Total Access:

No other access group can be assigned because all doors for all PXL controllers already exist in the Total Access group, which is already selected.



2. One Controller Per Group:

You can add as many access groups to the cardholders as you want as no PXL controller or its doors exist in more than one access group.



PXL Access Rights Limitations

Application Note

3. Multiple Controllers in Multiple Groups

You can assign as many access groups as you want as each group contains its own list of PXL controllers.

Drag a column header here to group by that column.

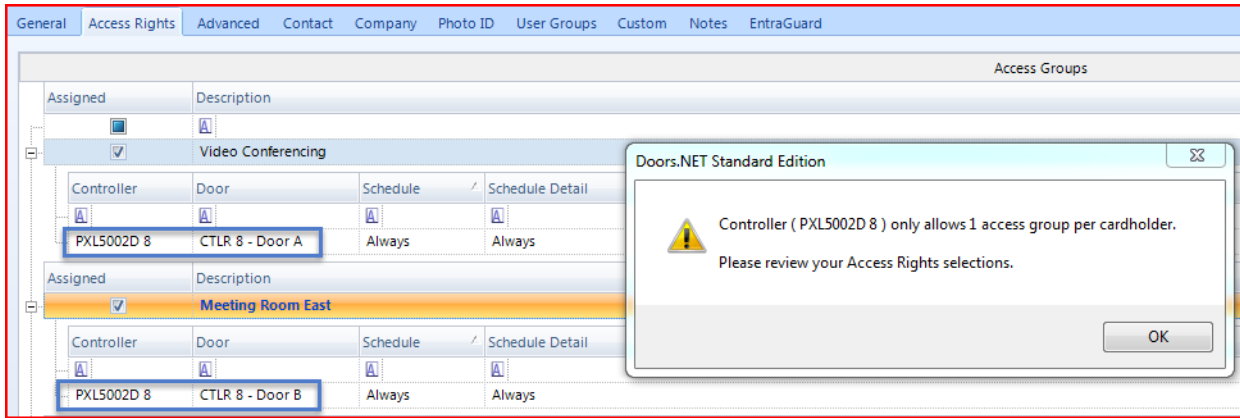
Description	Gateway	Controller	Door	Schedule	Schedule Detail
Total Access					
Building 1					
		PXL #4	PXL - Door 1	Always	Always
		PXL #4	PXL - Door 2	Always	Always
Building 2					
		PXL #5	PXL - Door 3	Always	Always
		PXL #5	PXL - Door 4	Always	Always
Building 3					
		PXL #6	PXL - Door 5	Always	Always
		PXL #6	PXL - Door 6	Always	Always
Building 4					
		PXL #7	MS - 7	Always	Always
		PXL #7	MS - 8	Always	Always

PXL Access Rights Limitations

Application Note

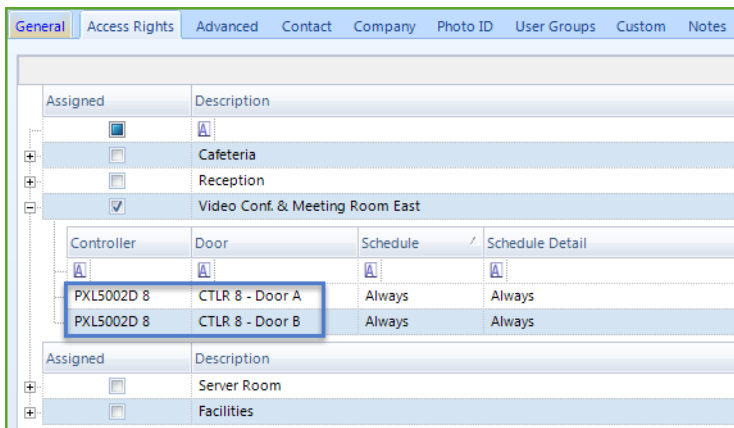
4. One Door Per Group:

You cannot assign a group that has a controller's doors located in different access groups.



In the above image controller 8 has its doors in different access groups and so these two access groups cannot both be assigned to the same cardholder. If a cardholder requires access to both these doors they must both be added to the same access group.

As shown here:



PXL Access Rights Limitations

Application Note

Contact Keri Systems

Keri USA	Keri UK, Ireland, Europe
2305 Bering Drive San Jose, CA 95131	Unit 17 Park Farm Industrial Estate Ermine Street Buntingford Herts SG9 9AZ UK
Telephone: (800) 260-5265 (408) 435-8400	Telephone: + 44 (0) 1763 273 243
Fax: (408) 577-1792	Fax: + 44 (0) 1763 274 106
Web: www.kerisys.com	Web: www.kerisystems.co.uk
E-mail: sales@kerisys.com techsupport@kerisys.com	E-mail: sales@kerisystems.co.uk tech-support@kerisystems.co.uk

end of document