

# PXL Access Rights Limitations

## Application Note

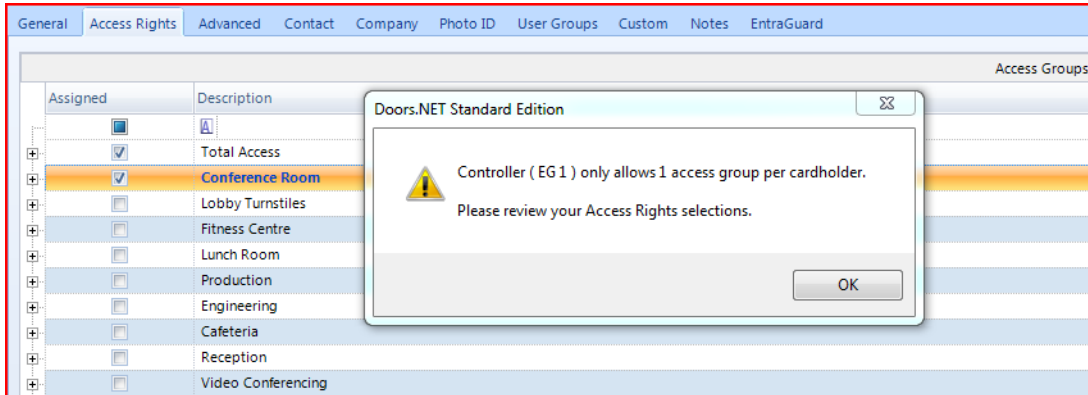
When using PXL controllers there are certain limitations related to the assignment of access groups.

- You can only select multiple access groups if each access group contains a unique list of PXL controllers.
- As long as your access groups contain unique lists of PXL controllers, you can add as many access groups to the cardholder as you want.

### Examples of Assigning PXL Access Rights to Cardholders

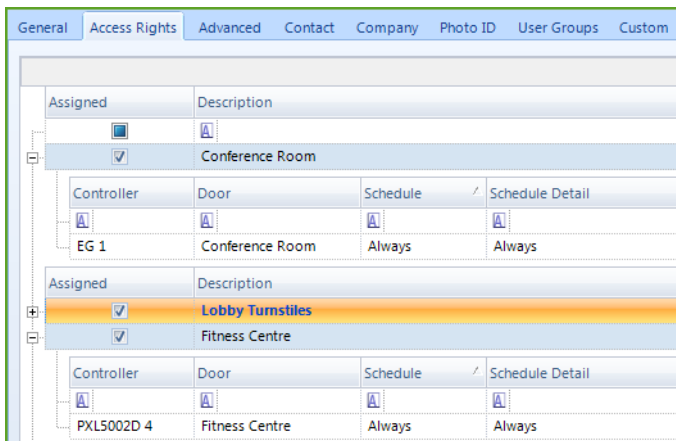
#### 1. Cardholder Assigned Total Access:

*No other access group can be assigned because all doors for all PXL controllers already exist in the Total Access group, which is already selected.*



#### 2. One Controller Per Group:

*You can add as many access groups to the cardholders as you want as no PXL controller or its doors exist in more than one access group.*



# Applicable Product/Title of Document

## Type of Document

### 3. Multiple Controllers in Multiple Groups

*You can assign as many access groups as you want as each group contains its own list of PXL controllers.*

Drag a column header here to group by that column.

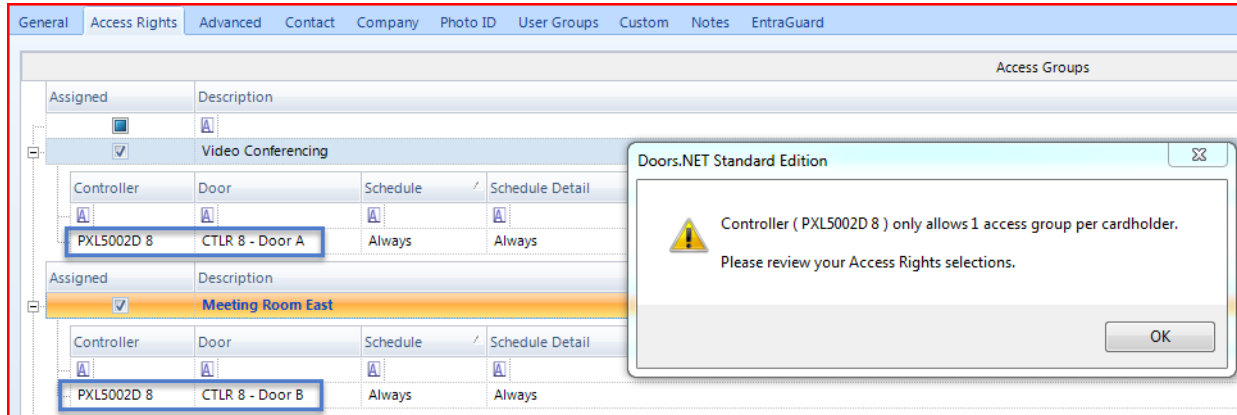
Description	Gateway	Controller	Door	Schedule	Schedule Detail
<b>Total Access</b>					
<b>Building 1</b>					
	<input checked="" type="checkbox"/>	<input type="checkbox"/>	<input type="checkbox"/>	<input type="checkbox"/>	<input type="checkbox"/>
PXL		PXL #4	PXL - Door 1	Always	Always
PXL		PXL #4	PXL - Door 2	Always	Always
<b>Building 2</b>					
	<input checked="" type="checkbox"/>	<input type="checkbox"/>	<input type="checkbox"/>	<input type="checkbox"/>	<input type="checkbox"/>
PXL		PXL #5	PXL - Door 3	Always	Always
PXL		PXL #5	PXL - Door 4	Always	Always
<b>Building 3</b>					
	<input checked="" type="checkbox"/>	<input type="checkbox"/>	<input type="checkbox"/>	<input type="checkbox"/>	<input type="checkbox"/>
PXL		PXL #6	PXL - Door 5	Always	Always
PXL		PXL #6	PXL - Door 6	Always	Always
<b>Building 4</b>					
	<input checked="" type="checkbox"/>	<input type="checkbox"/>	<input type="checkbox"/>	<input type="checkbox"/>	<input type="checkbox"/>
PXL		PXL #7	MS - 7	Always	Always
PXL		PXL #7	MS - 8	Always	Always

# PXL Access Rights Limitations

## Application Note

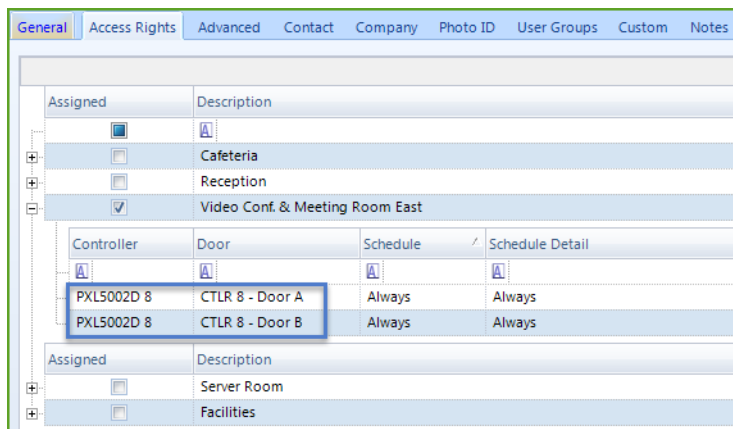
### 4. One Door Per Group:

*You cannot assign a group that has a controller's doors located in different access groups.*



In the above image controller 8 has its doors in different access groups and so these two access groups cannot both be assigned to the same cardholder. If a cardholder requires access to both these doors they must both be added to the same access group.

As shown here:



# Applicable Product/Title of Document

## Type of Document

---

### Contact Keri Systems

Keri USA	Keri UK, Ireland, Europe
2305 Bering Drive San Jose, CA 95131	Unit 17 Park Farm Industrial Estate Ermine Street Buntingford Herts SG9 9AZ UK
Telephone: (800) 260-5265 (408) 435-8400	Telephone: + 44 (0) 1763 273 243
Fax: (408) 577-1792	Fax:+ 44 (0) 1763 274 106
Web: <a href="http://www.kerisys.com">www.kerisys.com</a>	Web: <a href="http://www.kerisystems.co.uk">www.kerisystems.co.uk</a>
E-mail: <a href="mailto:sales@kerisys.com">sales@kerisys.com</a> <a href="mailto:techsupport@kerisys.com">techsupport@kerisys.com</a>	E-mail: <a href="mailto:sales@kerisystems.co.uk">sales@kerisystems.co.uk</a> <a href="mailto:tech-support@kerisystems.co.uk">tech-support@kerisystems.co.uk</a>

end of document